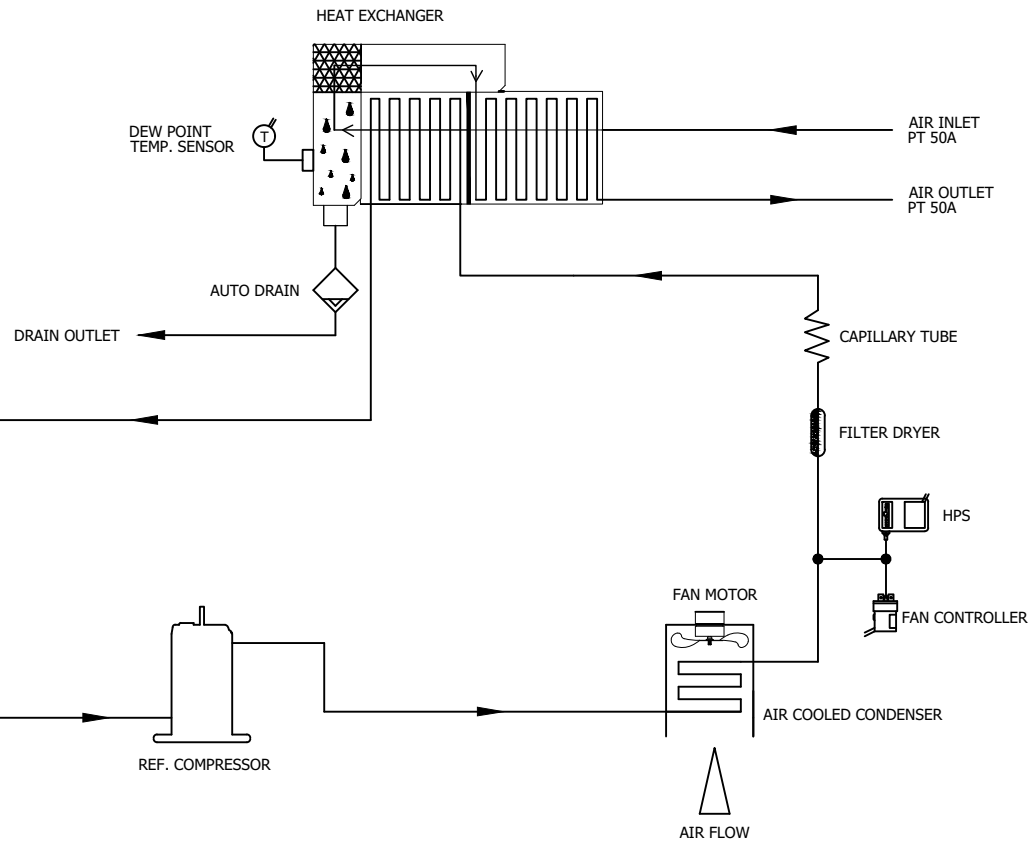
	<b>Eco Pro Refrigerated Air Dryer</b>		Rev.	Date	Prepared By	Checked By	Approved By
			1	2020.09.18	WOO.I.H.	JO.S.J.	KIM.H.W.
	<b>Air Cooled Type</b>		2				
			3				
4							
Project Name			-		Model Name		HYD-75N2
<b>SPECIFICATION</b>							
1							
2	Supply Voltage	220V	Inlet Flow Rate	10.5	Nm3/min		
3	Phase	1PH	Inlet Pressure	7	barg		
4	Frequency	60Hz	Inlet Temp.	38	°C		
5	Control use	220V	Outlet Flow Rate	10.5	Nm3/min		
6	Fulid	Compressed Air	Outlet Pressure	6.8	barg		
7	Location	Indoor	Outlet Temp.	28±5	°C		
8	Design Code	Maker STD.	Pressure Drop	0.2	barg		
9	Area Class	Non-Hazardous	Outlet Dew Point	2~10	°C		
10			Design Pressure	14	barg		
11			Design Temperature	70	°C		
12			Ambient Temperature	32	°C		
<b>CONSTRUCTION</b>							
13							
14	Refrigerant	R-22	Dimension (W x L x H)	458 X 798 X 1,045	mm		
15	Ref. Compressor Type	Rotary	Weight	120	kg		
16	Ref. Compressor Capacity	1-1/2 HP	Min. Power Consumption	1.05	kW		
17	Condenser Type	Air Cooled	Inlet Connection	50A	PT Female Screw		
18	Condenser Fan Motor	100 W	Outlet Connection	50A	PT Female Screw		
19		1 EA	Drain Connection	10A	PT Female Screw		
20	Condenser Fan Size	350 mm	Color (Munsell)	5.7PB 4.1/9.9			
21	Condenser Capacity	1-1/2 HP		5.7PB 2.9/3.5			
22	Condenser Material	Aluminum & Copper					
23	Heat Exchanger Type	Block					
24	Heat Exchanger Material	Aluminum					
25	Ref. Control Device	Capillary Tube					
26	ECO Mode Control	Dew Point Temp. Control					
27	Drain Trap Type	Auto Float					
<b>STANDRAD FEATURES AND CONTROL</b>							
28							
29	Fan Controller	YES	Ref. Compressor	YES			
30	Ref. Liquid Filter Dryer	YES	Capillary Tube	YES			
31	Overload Relay	NO	Hot Gas Bypass Valve	NO			
32	PCB Controller	YES	Air Cooled Condenser	YES			
33	Fan Motor Test Button	NO	Accumulator	NO			
34	Air Pressure Gauge	NO	Liquid Ref. Receiver	NO			
35	Ref. Pressure Gauge	NO	Oil Separator	NO			
36	High Pressure Switch	YES	Circuit Breaker	NO			
37	Moisture Indicator	NO	Ref. Compressor Heater	NO			
38	Drain	YES					
<b>NOTES</b>							
39							
40							
41							
42							
43							
44							
45							
46							




Z0-ZNS/L00-GJH-VSS  
ON DWG

DEW POINT	2~10°C @ FDP		
INLET AIR PRESSURE	7.0 BARG		
INLET AIR TEMPERATURE	38°C		
CAPACITY	10.5 Nm <sup>3</sup> /min		
9	AUTO DRAIN	IN : PT 15A / OUT : 6A	1
8	HEAT EXCHANGER	75 HP	1
7	CAPILLARY TUBE	-	1
6	FILTER DRYER	3/8"	1
5	HPS	24 BARG	1
4	FAN CONTROLLER	12 ~ 18 BARG	1
3	FAN MOTOR	0.1KW 4P ø350	1
2	A/C CONDENSER	1-1/2 HP (CONDENSING CAPACITY)	1
1	REF. COMPRESSOR	1-1/2 HP (COOLING CAPACITY)	1
NO.	PART NAME	DESCRIPTION	QTY



- ← AIR INLET LINE
- AIR OUTLET LINE
- ← REF. LOW PRESS. LINE
- REF. HIGH PRESS. LINE

REV.	DATE	DESCRIPTION	DWG	CHK	APPD	APPD
2020.09.18		ISSUED FOR REFERENCE				
PROJECT						
MANUFACTURER						
 <small>Global Standard Air &amp; Gas</small>						
TITLE						
PIPING & INSTRUMENTATION DRAWING						
ITEM NO.	HYD-75N2		DWG NO.		GSA-HYD-0075N2-02	
SCALE	NONE				REV	
						A

(A4 : 297mm x 210mm)

