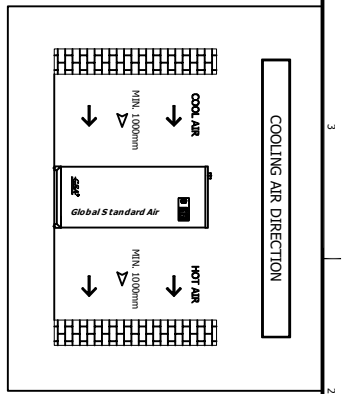
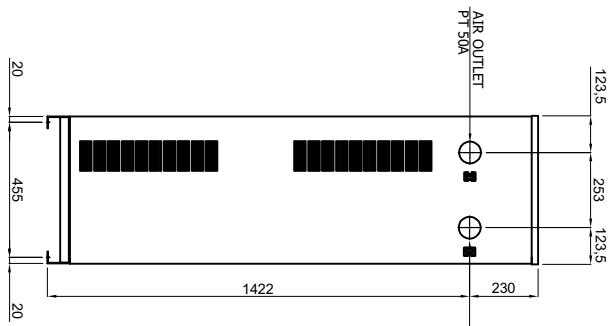
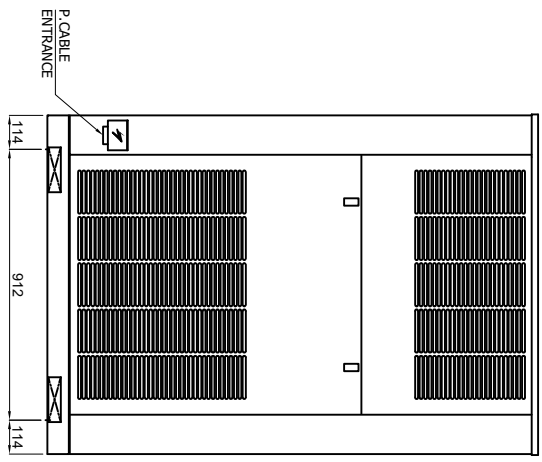
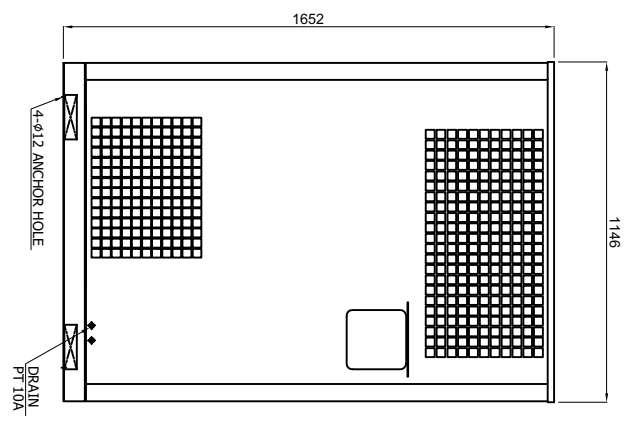
	Refrigerated Air Dryer		Rev.	Date	Prepared By	Checked By	Approved By
			1	2020.09.15	PARK.W.T.	PARK.W.T.	KIM.H.W.
	High Inlet Temp. Type		2				
			3				
			4				
Project Name		-	Model Name		HYD-75HTNS		
SPECIFICATION							
1							
2	Supply Voltage	220V	Inlet Flow Rate	10.5	Nm ³ /min		
3	Phase	1PH	Inlet Pressure	7	barg		
4	Frequency	60Hz	Inlet Temp.	60	°C		
5	Control use	220V	Outlet Flow Rate	10.5	Nm ³ /min		
6	Fulid	Compressed Air	Outlet Pressure	6.6	barg		
7	Location	Indoor	Outlet Temp.	30±5	°C		
8	Design Code	Maker STD.	Pressure Drop	0.4	bar		
9	Area Class	Non-Hazardous	Outlet Dew Point	2~10	°C@PDP		
10			Design Pressure	9.7	barg		
11			Design Temperature	80	°C		
12			Ambient Temperature	32	°C		
CONSTRUCTION							
14	Refrigerant	R-22	Ref. Control Device	Capillary Tube			
15	Ref. Compressor Type	Rotary	Temp. Control Device	Hot Gas Bypass Valve			
16	Ref. Compressor Capacity	1-1/2 HP	Drain Trap Type	Auto Float			
17	Condenser Type	Air Cooled	Dimension (W x L x H)	500 X 1,146 X 1,652	mm		
18	Condenser Fan Motor	100 W	Weight	220	kg		
19	Condenser Fan Size	Ø350 mm	Power Consumption	2.2	kW		
20	Condenser Capacity	1-1/2 HP	Inlet Connection	50A	PT Female Screw		
21	Condenser Material	Aluminum & Copper	Outlet Connection	50A	PT Female Screw		
22	After Cooler Fan Motor	66 W	Drain Connection	15A	PT Female Screw		
23		2 EA	Color (Munsell)	5.7PB 4.1/9.9			
24	After Cooler Fan Size	Ø300 mm		5.7PB 2.9/3.5			
25	Heat Exchanger Type	Block					
26	Heat Exchanger Material	Aluminum					
STANDRAD FEATURES AND CONTROL							
28	Fan Controller	YES	Ref. Compressor	YES			
29	Ref. High Pressure Switch	YES	Ref. Filter Dryer	YES			
30	Overload Relay	NO	Capillary Tube	YES			
31	Power Relay for A/C Fan Motor	YES	Hot Gas Bypass Valve	YES			
32	Air Pressure Gauge	NO	Air Cooled Condenser	YES			
33	Ref. Pressure Gauge	NO					
34	Moisture Indicator	NO					
35	After Cooler	YES					
36	Pre Filter	YES					
37	After Filter	YES					
38	Drain	YES					
NOTES							
40							
41							
42							
43							
44							
45							
46							



SPECIFICATION	
INLET AIR TEMPERATURE	60°C
AMBIENT TEMPERATURE	32°C
INLET AIR PRESSURE	7 barg
CAPACITY	10.5 Nm ³ /min
IN/OUT CONNECTION	PT 50A
DIMENSION(WXDXH, mm)	500X1146X1652
WEIGHT	220 kg
POWER CONSUMPTION	2.2 kW
POWER SUPPLY	220V - 1PH - 60Hz



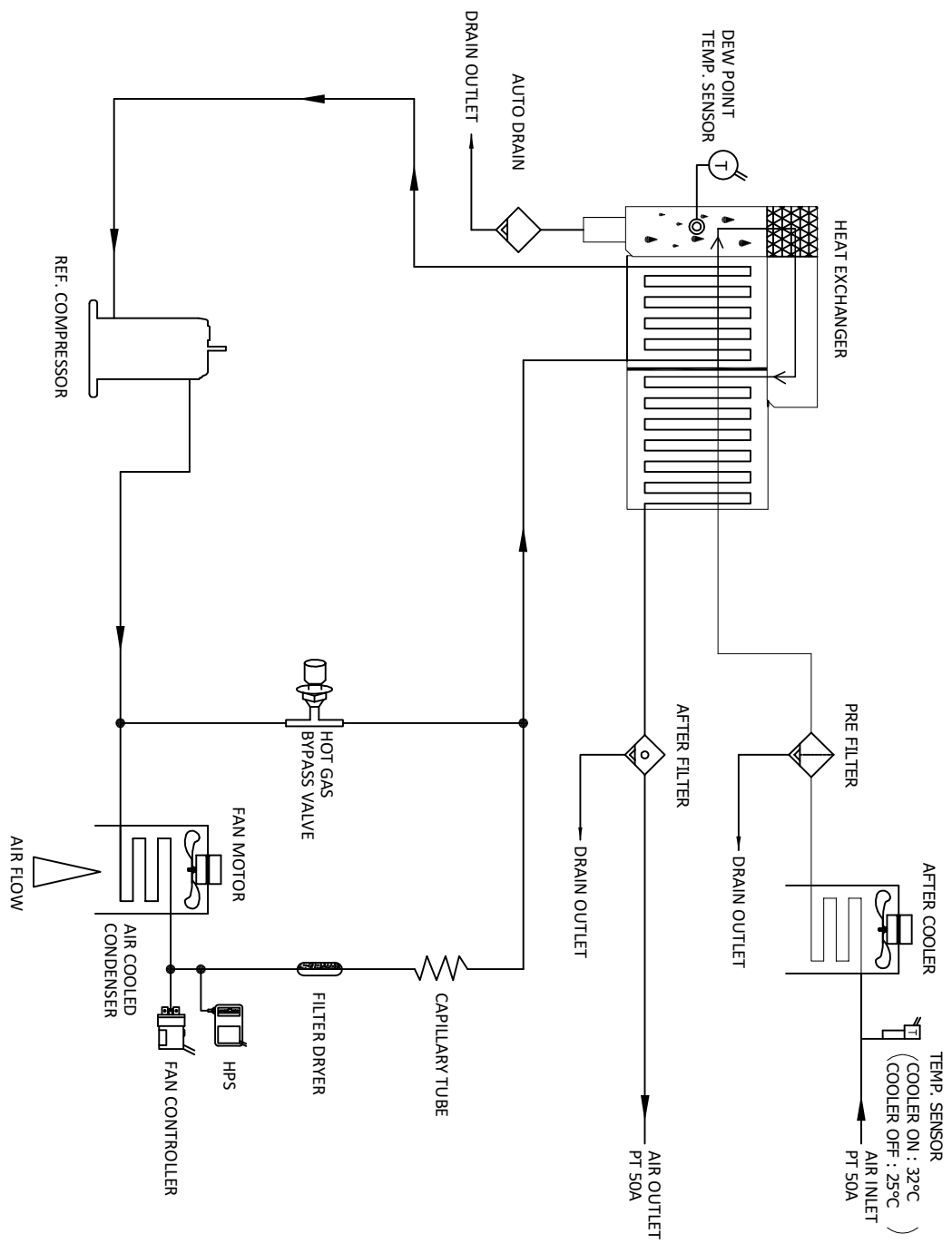
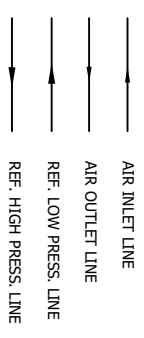
REV.	NO.	DATE	DESCRIPTION	CHK.	APP.	DATE
Δ	1					
Δ	2					
Δ	3					
Δ	4					
Δ	5					
Δ	6					
Δ	7					
Δ	8					
Δ	9					
Δ	10	2024.03.20	CHANGE OF COMPANY LOGO			
Δ	11	2024.11.26	ISSUED FOR REFERENCE			

MANUFACTURER
GSA
Global Standard Air

TITLE
OUTLINE DRAWING

ITEM NO. 1075/SHINE DWG. NO. GSA-HYD-007/SHINS-01
SCALE NONE

REV. 10 (A4: 297mm x 210mm)



NO.	PART NAME	DESCRIPTION	QTY
1	COMPRESSOR	(COOLING CAPACITY)	1
2	A/C CONDENSER	(COOLING CAPACITY)	1
3	FAN MOTOR	100W/4P/230V	1
4	FAN CONTROLLER	12 ~ 18 BRGS	1
5	HPS	24 BRGS	1
6	FILTER DRYER	3/8"	1
7	HEAT EXCHANGER	75HP	1
8	AUTO DRAIN	IN : PT. 15A / OUT : 6A	1
9	HSHV	-	1
10	CAPILLARY TUBE	-	1
11	TEMP. SENSOR	COOLER CONTROL	1
12	AFTER COOLER	A/C-75	1
13	PRE FILTER	5 MICRON	1
14	AFTER FILTER	1 MICRON	1
15	INLET AIR PRESSURE	7.0 BARG	1
16	INLET AIR TEMPERATURE	60°C	1
17	CAPACITY	10.5 Nm ³ /min	1
18	DEW POINT	2~10°C @ P/P	1

ITEM NO.	REV./S/DATE	ENG. NO.	REV.
1			
2			
3			
4			
5			
6			
7			
8			
9			
10			
11			
12			
13			
14			
15			
16			
17			
18			
19			
20			
21			
22			
23			
24			
25			
26			
27			
28			
29			
30			

TITLE
PIPING & INSTRUMENTATION DRAWING

SCALE
 NONE

DATE
 2024.11.26

PROJECT
 GSA-HYD-0073HTNS-02

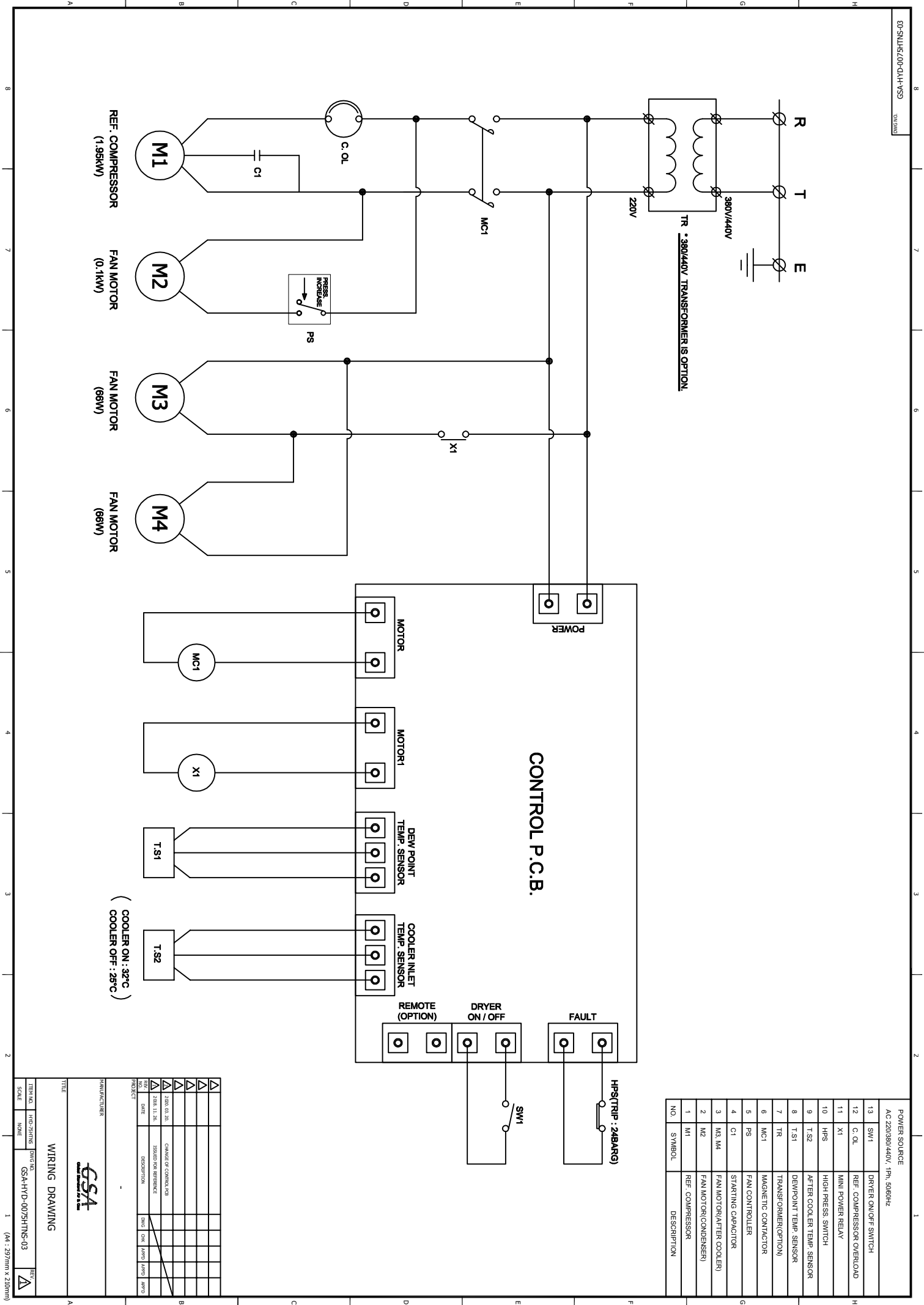
SCALE
 NONE

DATE
 2024.11.26

PROJECT
 GSA-HYD-0073HTNS-02



MANUFACTURER
 GSA



NO.	SYMBOL	DESCRIPTION
1	M1	REF. COMPRESSOR
2	M2	FAN MOTOR(AFTER COOLERN)
3	M3, M4	FAN MOTOR(AFTER COOLERN)
4	C1	STARTING CAPACITOR
5	PS	FAN CONTROLLER
6	MCI1	MAGNETIC CONTACTOR
7	TR	TRANSFORMER(OPTION)
8	T.S1	AFTER COOLER TEMP. SENSOR
9	T.S2	DEWPOINT TEMP. SENSOR
10	HPS	HIGH PRESS. SWITCH
11	X1	MINI POWER RELAY
12	C.O.L	REF. COMPRESSOR OVERLOAD
13	SW1	DRYER ON/OFF SWITCH

NO.	REV.	DATE	DESCRIPTION	CHK.	APP.	DATE	APP.
1							
2							
3							
4							
5							
6							
7							
8							
9							
10							
11							
12							
13							
14							
15							

TITLE: WIRING DRAWING
 DRAWING NO.: GSA-HYD-0075H1MS-03
 SCALE: NONE
 SHEET NO.: 1
 TOTAL SHEETS: 1
 (44 : 297mm x 210mm)

