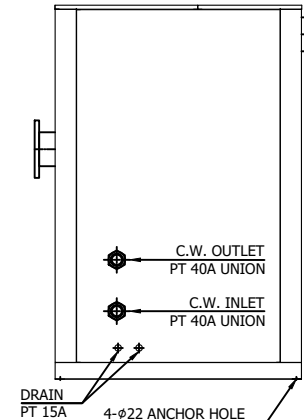
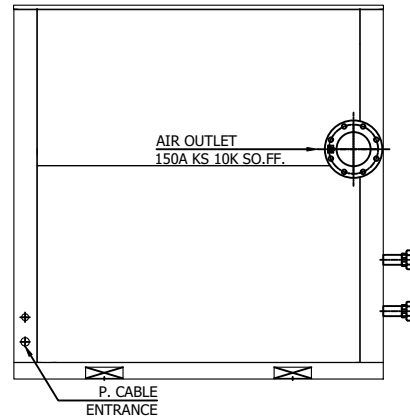
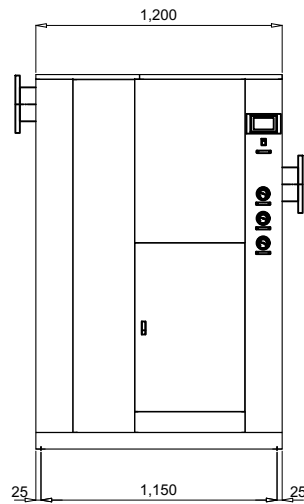
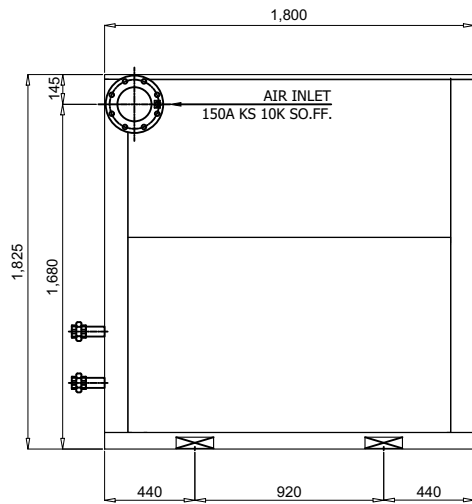
	Refrigerated Air Dryer		Rev.	Date	Prepared By	Checked By	Approved By
			A	2020.09.23	WOO.I.H.	JO.S.J.	KIM.H.W.
	Water Cooled Type		B				
			C				
			D				
Project Name		-	Model Name		HYD-600WN		
SPECIFICATION							
1							
2	Supply Voltage	380V	Inlet Flow Rate	91.0	Nm ³ /min		
3	Phase	3PH	Inlet Pressure	7.0	barg		
4	Frequency	60Hz	Inlet Temperature	38	°C		
5	Control use	220V	Outlet Flow Rate	91.0	Nm ³ /min		
6	Fulid	Compressed Air	Outlet Pressure	6.8	barg		
7	Location	Indoor	Outlet Temperature	28±5	°C		
8	Design Code	Maker STD.	Pressure Drop	0.2	bar		
9	Area Class	Non-Hazardous	Outlet Dew Point	2~10	°C@PDP		
10	Cooling Water Capacity	165.4 L/min	Design Pressure	9.7	barg		
11	Cooling Water Pressure	2 ~ 3 barg	Design Temperature	70	°C		
12	Cooling Water Temperature	32 °C	Ambient Temperature	32	°C		
CONSTRUCTION							
13							
14	Refrigerant	R-22	Dimension (W x L x H)	1,200 X 1,800 X 1,830	mm		
15	Ref. Compressor Type	Scroll	Weight	780	kg		
16	Ref. Compressor Capacity	15 HP	Power Consumption	11.9	kW		
17	Condenser Type	Water Cooled	Inlet Connection	150A	KS 10K SO.FF.		
18	Condenser Capacity	15 HP	Outlet Connection	150A	KS 10K SO.FF.		
19	Heat Exchanger Type	Block	Cooling Water Connection	40A	PT Union		
20	Heat Exchanger Material	Aluminum	Drain Connection	15A	PT Female Screw		
21	Ref. Control Device	TEV	Color (Munsell)	5.7PB 4.1/9.9			
22	Temp. Control Device	Hot Gas Bypass Valve		5.7PB 2.9/3.5			
23	Drain Trap Type	Level Sensor					
STANDRAD FEATURES AND CONTROL							
24							
25	Ref. Compressor	YES	Auto Drain	YES			
26	Water Cooled Condenser	YES	Hot Gas Bypass Valve	YES			
27	Cooling Water Regulating Valve	YES	Accumulator with Heat Exchanger	YES			
28	Liquid Ref. Receiver	NO	Oil Separator	YES			
29	Filter Dryer	YES	Ref. Pressure Switch	NO			
30	Expansion Valve	YES	4.3" TFT LCD	YES			
31	Heat Exchanger	YES	PCB Controller	YES			
32	Ref. Pressure Transmitter	YES					
33	Air Pressure Gauge	YES					
34	Ref. Pressure Gauge	YES					
NOTES							
35							
36							
37							
38							
39							
40							
41							
42							
43							
44							
45							
46							

10-NM0090-GAH-VSD
CON DWG

SPECIFICATION	
INLET AIR TEMPERATURE	38°C
AMBIENT TEMPERATURE	32°C
C.W. TEMP. / PRESS.	32°C / 2~3 barg
INLET AIR PRESSURE	7 barg
CAPACITY	91 Nm ³ /min
AIR IN/OUT CONNECTION	150A KS 10K SO.FF.
C.W IN/OUT CONNECTION	PT 40A
DIMENSION(WXDH, mm)	1,200 X 1,800 X 1,830
WEIGHT	780 kg
POWER CONSUMPTION	11.9 kW
POWER SUPPLY	380/440V - 3PH - 50/60Hz



REV.	DATE	DESCRIPTION	ENG.	CHK.	APPD.	APPD.
2020.09.23		ISSUED FOR REFERENCE				
PROJECT						
MANUFACTURER						
GSA Global Standard Air & Gas						
TITLE						
OUTLINE DRAWING						
ITEM NO.	HYD-600WN	DWG NO.	GSA-HYD-0600WN-01			
SCALE	NONE					

(A4 : 297mm x 210mm)

