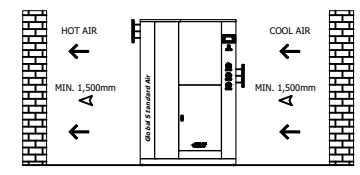
	Eco Pro Refrigerated Air Dryer		Rev.	Date	Prepared By	Checked By	Approved By
			1	2019.01.15	LEE.S.M.	JO.S.J.	KIM.H.W.
	Air Cooled Type		2				
			3				
4							
Project Name			-		Model Name		HYD-500N2
SPECIFICATION							
1							
2	Supply Voltage	380V		Inlet Flow Rate	66 Nm ³ /min		
3	Phase	3PH		Inlet Pressure	7 barg		
4	Frequency	60Hz		Inlet Temp.	38 °C		
5	Control use	220V		Outlet Flow Rate	66 Nm ³ /min		
6	Fulid	Compressed Air		Outlet Pressure	6.8 barg		
7	Location	Indoor		Outlet Temp.	28±5 °C		
8	Design Code	Maker STD.		Pressure Drop	0.2 bar		
9	Area Class	Non-Hazardous		Outlet Dew Point	2~10 °C		
10				Design Pressure	9.7 barg		
11				Design Temperature	70 °C		
12				Ambient Temperature	32 °C		
CONSTRUCTION							
13							
14	Refrigerant	R-22		Dimension (W x L x H)	1,200 X 1,800 X 1,825 mm		
15	Ref. Compressor Type	Scroll		Weight	940 kg		
16	Ref. Compressor Capacity	13	HP	Min. Power Consumption	5.85 kW		
17	Condenser Type	Air Cooled		Inlet Connection	150A	KS 10K SO.FF.	
18	Condenser Fan Motor	0.4	kW	Outlet Connection	150A	KS 10K SO.FF.	
19		2	EA	Drain Connection	15A	PT Female Screw	
20	Condenser Fan Size	600	mm	Color (Munsell)	5.7PB 4.1/9.9		
21	Condenser Capacity	15	HP		5.7PB 2.9/3.5		
22	Condenser Material	Aluminum & Copper					
23	Heat Exchanger Type	Block					
24	Heat Exchanger Material	Aluminum					
25	Ref. Control Device	TEV					
26	ECO Mode Control	Dew Point Temp. Control					
27	Drain Trap Type	Level Sensor					
STANDRAD FEATURES AND CONTROL							
28							
29	Ref. Pressure Transmitter	YES		Ref. Compressor	YES		
30	Ref. Liquid Filter Dryer	YES		Expansion Valve	YES		
31	Overload Relay	YES		Hot Gas Bypass Valve	YES		
32	PCB Controller	YES		Air Cooled Condenser	YES		
33	4.3" TFT LCD	YES		Accumulator with Heat Exchanger	YES		
34	Air Pressure Gauge	YES		Liquid Ref. Receiver	NO		
35	Ref. Pressure Gauge	YES		Oil Separator	YES		
36	Dual Pressure Switch	NO		Circuit Breaker	YES		
37	Moisture Indicator	YES		Ref. Compressor Heater	YES		
38	Drain	YES					
NOTES							
39							
40							
41							
42							
43							
44							
45							
46							

T0-ZN0050-DYH-VSS
CON DWG

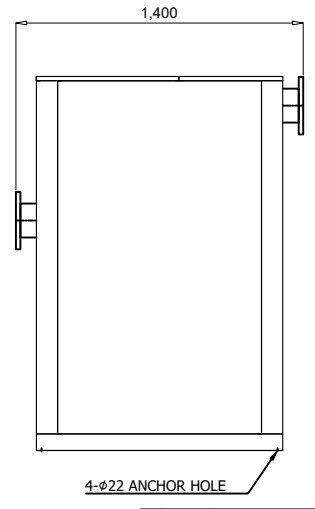
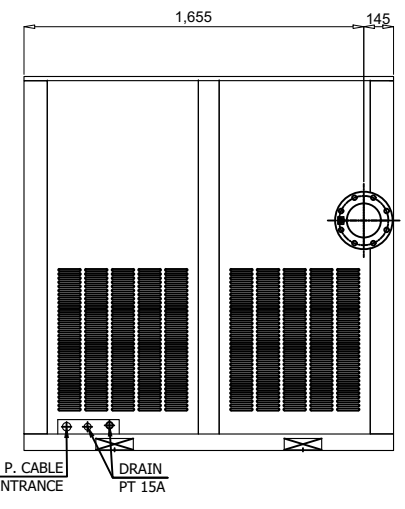
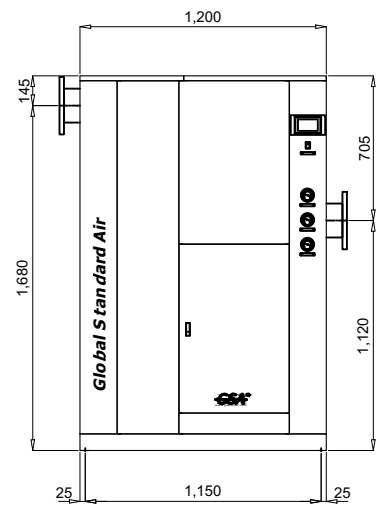
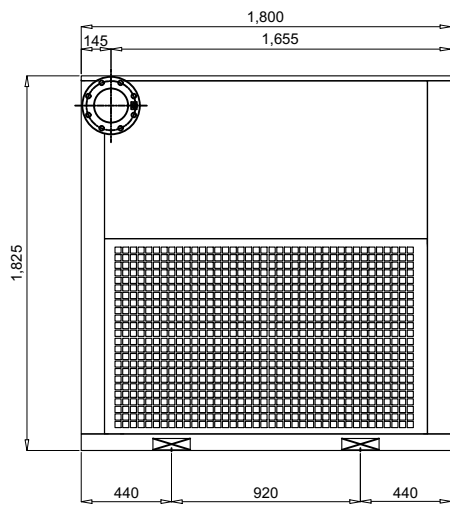
AIR INLET
150A KS 10K SO.FF.

AIR OUTLET
150A KS 10K SO.FF.

COOLING AIR DIRECTION



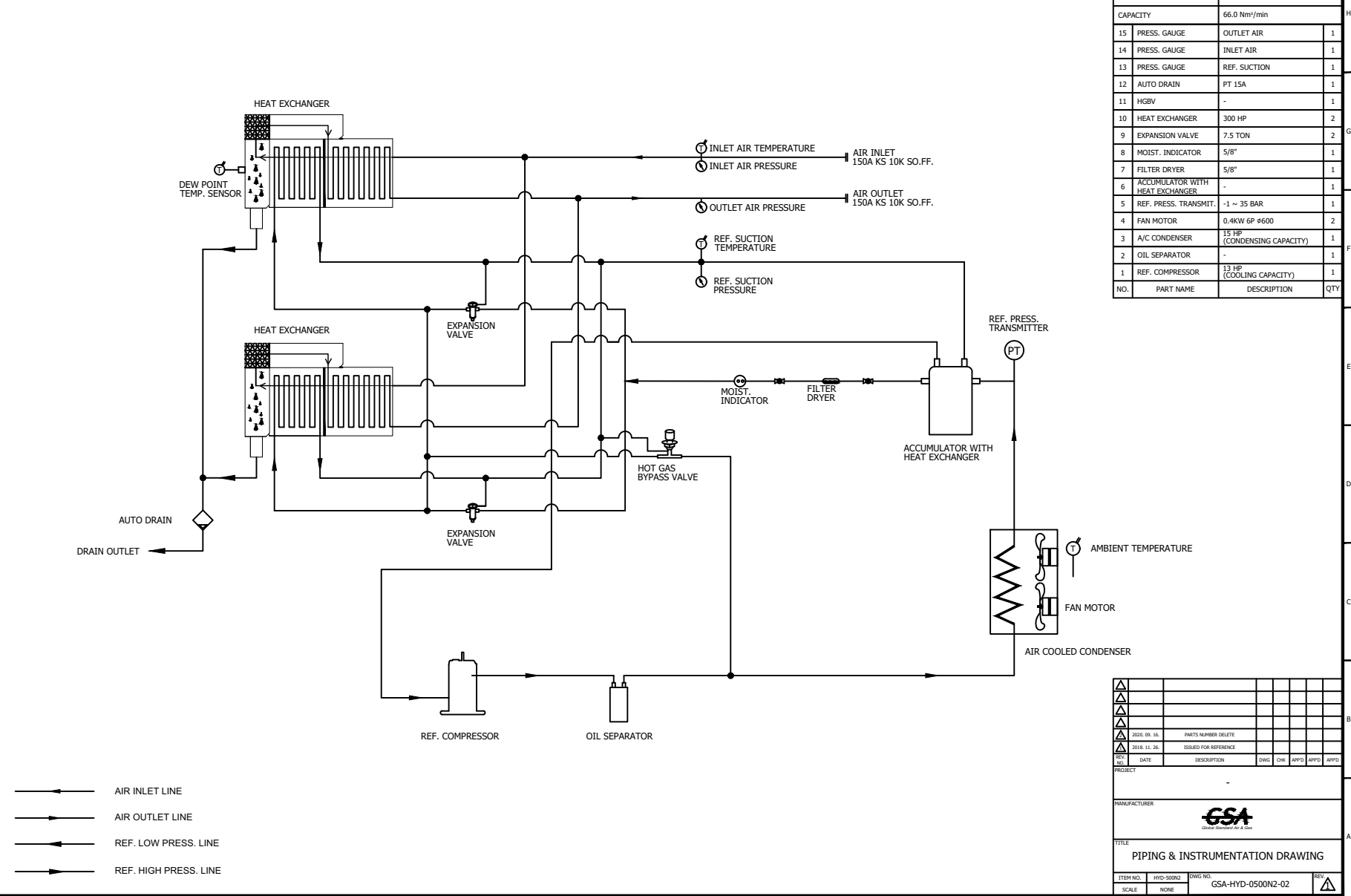
SPECIFICATION	
INLET AIR TEMPERATURE	38°C
AMBIENT TEMPERATURE	32°C
INLET AIR PRESSURE	7 barg
CAPACITY	66.0 Nm ³ /min
IN/OUT CONNECTION	150A KS 10K SO.FF.
DIMENSION(WXDXH, mm)	1,200 X 1,800 X 1,830
WEIGHT	940 kg
MIN. POWER CONSUMP.	5.85 kW
POWER SUPPLY	380/440V - 3PH - 50/60HZ



REV.	DATE	DESCRIPTION	DWG	CHK	APPD	APPD
2018.11.26		ISSUED FOR REFERENCE				
PROJECT						
MANUFACTURER						
GSA Global Standard Air & Gas						
TITLE						
OUTLINE DRAWING						
ITEM NO.	HYD-SOING	DWG NO.		REV.		
SCALE	NONE	GSA-HYD-0500N2-01				


(A4 : 297mm x 210mm)

Z0-N0050-GJH-VSS
ON DWG

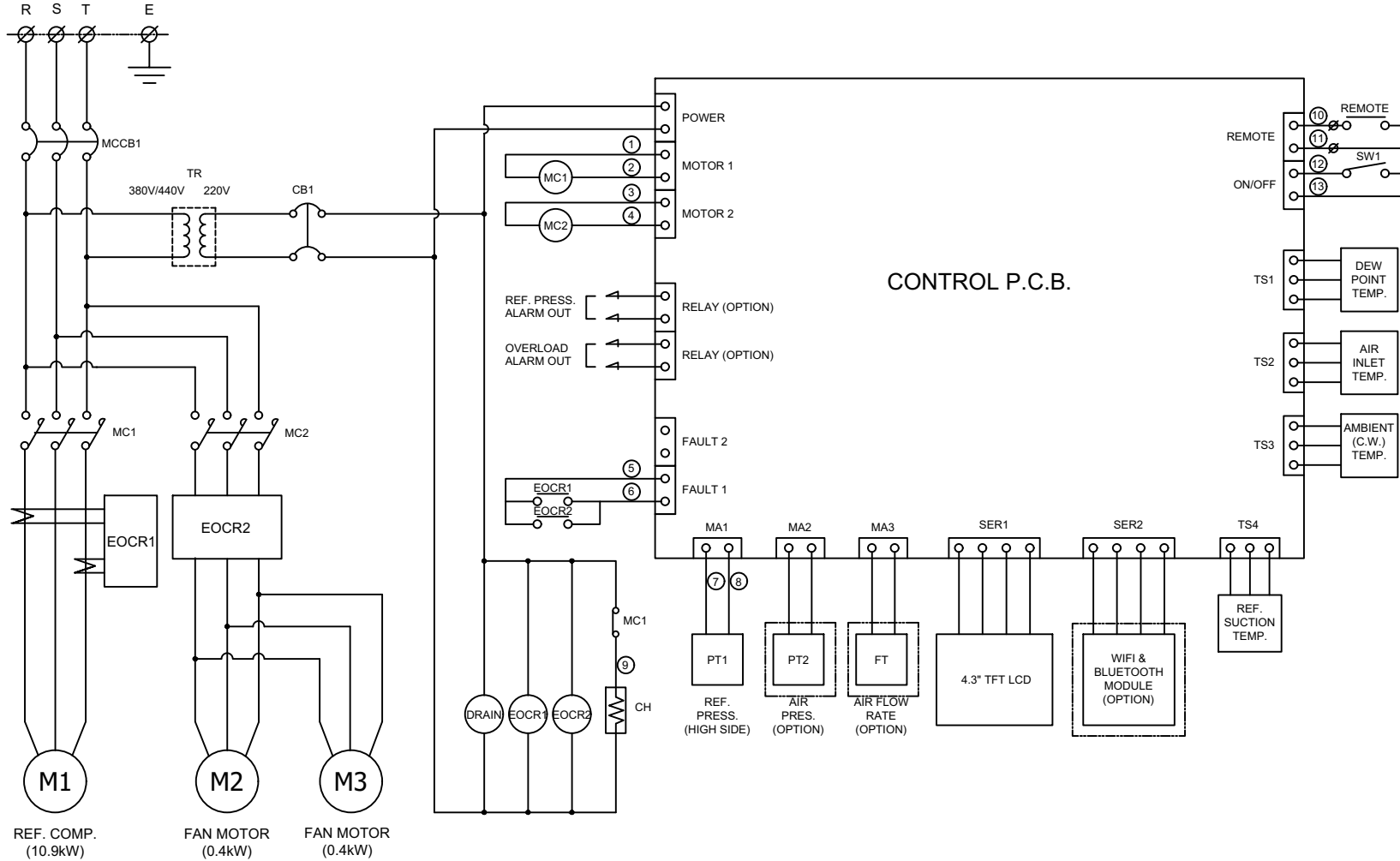


← AIR INLET LINE
 → AIR OUTLET LINE
 ← REF. LOW PRESS. LINE
 → REF. HIGH PRESS. LINE

DEW POINT	2~10°C @ FDP		
INLET AIR PRESSURE	7.0 BARG		
INLET AIR TEMPERATURE	38°C		
CAPACITY	66.0 Nm ³ /min		
15	PRESS. GAUGE	OUTLET AIR	1
14	PRESS. GAUGE	INLET AIR	1
13	PRESS. GAUGE	REF. SUCTION	1
12	AUTO DRAIN	PT 15A	1
11	HGBV	-	1
10	HEAT EXCHANGER	300 HP	2
9	EXPANSION VALVE	7.5 TON	2
8	MOIST. INDICATOR	5/8"	1
7	FILTER DRYER	5/8"	1
6	ACCUMULATOR WITH HEAT EXCHANGER	-	1
5	REF. PRESS. TRANSMIT.	-1 ~ 35 BAR	1
4	FAN MOTOR	0.4KW 6P #600	2
3	A/C CONDENSER	15 HP (CONDENSING CAPACITY)	1
2	OIL SEPARATOR	-	1
1	REF. COMPRESSOR	13 HP (COOLING CAPACITY)	1
NO.	PART NAME	DESCRIPTION	QTY

△									
△									
△									
△									
△	2020. 09. 16.	PARTS NUMBER DELETE							
△	2018. 11. 26.	ISSUED FOR REFERENCE							
REV.	DATE	DESCRIPTION	ENG	CHK	APPD	APPD	APPD	APPD	APPD
PROJECT									
MANUFACTURER									
 <small>Global Standard Air & Gas</small>									
TITLE									
PIPING & INSTRUMENTATION DRAWING									
ITEM NO.	HYD-S002	DWG NO.	GSA-HYD-0500N2-02						
SCALE	NONE								

(A4 : 297mm x 210mm)



CONTROL P.C.B.

POWER SOURCE AC 380/440V, 3Ph, 50/60Hz		
12	PT1	REF. PRESSURE TRANSMITTER
11	DRAIN	AUTO DRAIN VALVE
10	SW1	SYSTEM ON/OFF SWITCH
9	CH	REF. COMP. HEATER
8	DRAIN	AUTO DRAIN VALVE
7	TS1 ~ TS4	TEMP. SENSOR
6	CB1	CIRCUIT BREAKER(CTRL)
5	MCCB1	CIRCUIT BREAKER(MAIN)
4	MC1, MC2	MAGNETIC CONTACTOR
3	EOCR1, EOCR2	OVERLOAD RELAY
2	M2, M3	FAN MOTOR
1	M1	REF. COMPRESSOR
NO.	SYMBOL	DESCRIPTION

***REVERSE PHASE WARNING**

Be sure to check the rotation direction of the fan motor and the operating condition of the refrigerant compressor.

- The fan motor must rotate clockwise.
- When the refrigerant compressor is operating, the refrigerant suction pressure will be lowered.

When operating in reverse phase, the refrigerant compressor is damaged.

In case of reverse phase, change the position of 2 wires out of 3 wires of the power supply line.

Problems caused by incorrect power connection are not guaranteed.

△									
△									
△									
△									
△	2018. 11. 26.	ISSUED FOR REFERENCE							
REV. NO.	DATE	DESCRIPTION	DWG	CHK	APPD	APPD	APPD	APPD	APPD

PROJECT: -

MANUFACTURER: **GSA**
Global Systems Automation & Control

TITLE: **WIRING DRAWING**

ITEM NO.	HYD-500N2	DWG NO.	GSA-HYD-0500N2-03	REV.	△
SCALE	NONE				