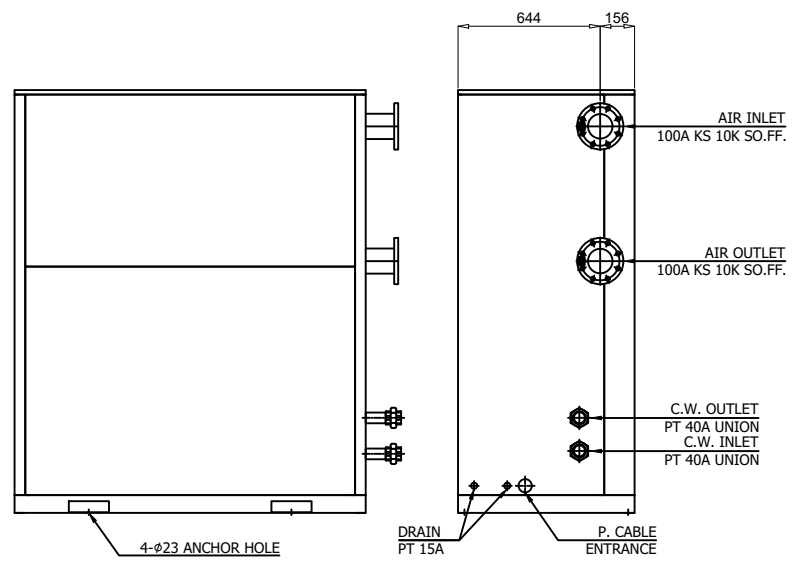
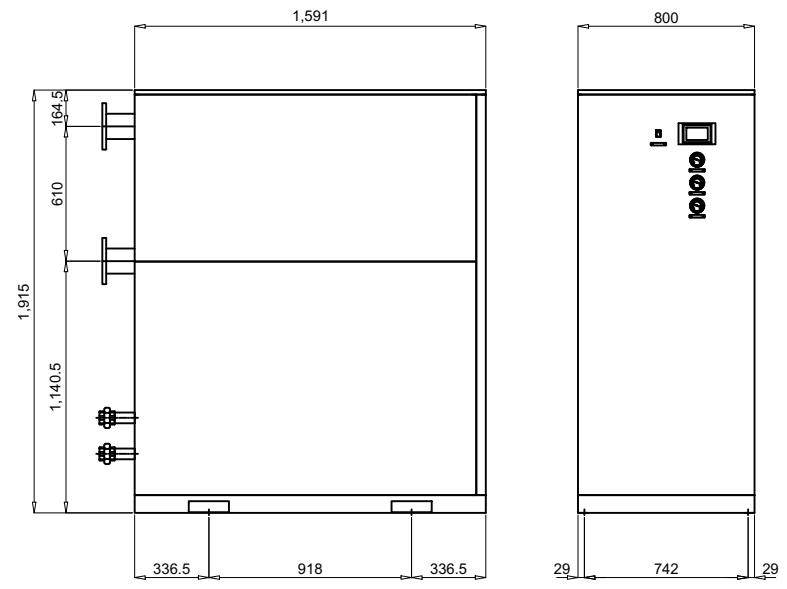
	Refrigerated Air Dryer		Rev.	Date	Prepared By	Checked By	Approved By
			A	2020.09.23	WOO.I.H.	JO.S.J.	KIM.H.W.
	Water Cooled Type		B				
			C				
			D				
Project Name		-		Model Name		HYD-400WN	
SPECIFICATION							
1							
2	Supply Voltage	380V		Inlet Flow Rate	59		Nm3/min
3	Phase	3PH		Inlet Pressure	7		barg
4	Frequency	60Hz		Inlet Temperature	38		°C
5	Control use	220V		Outlet Flow Rate	59		Nm3/min
6	Fulid	Compressed Air		Outlet Pressure	6.8		barg
7	Location	Indoor		Outlet Temperature	28±5		°C
8	Design Code	Maker STD.		Pressure Drop	0.2		bar
9	Area Class	Non-Hazardous		Outlet Dew Point	2~10		°C@PDP
10	Cooling Water Capacity	96.2	L/min	Design Pressure	14		barg
11	Cooling Water Pressure	2 ~ 3	barg	Design Temperature	70		°C
12	Cooling Water Temperature	32	°C	Ambient Temperature	32		°C
CONSTRUCTION							
13							
14	Refrigerant	R-22		Dimension (W x L x H)	800 X 1,591 X 1,915		mm
15	Ref. Compressor Type	Scroll		Weight	500		kg
16	Ref. Compressor Capacity	10	HP	Power Consumption	8.9		kW
17	Condenser Type	Water Cooled		Inlet Connection	100A	KS 10K SO.FF.	
18	Condenser Capacity	10	HP	Outlet Connection	100A	KS 10K SO.FF.	
19	Heat Exchanger Type	Block		Cooling Water Connection	40A	PT Union	
20	Heat Exchanger Material	Aluminum		Drain Connection	15A	PT Female Screw	
21	Ref. Control Device	TEV		Color (Munsell)	5.7PB 4.1/9.9		
22	Temp. Control Device	Hot Gas Bypass Valve			5.7PB 2.9/3.5		
23	Drain Trap Type	Level Sensor					
STANDRAD FEATURES AND CONTROL							
24							
25	Ref. Compressor	YES		Auto Drain	YES		
26	Water Cooled Condenser	YES		Hot Gas Bypass Valve	YES		
27	Cooling Water Regulating Valve	YES		Accumulator with Heat Exchanger	YES		
28	Liquid Ref. Receiver	NO		Oil Separator	YES		
29	Filter Dryer	YES		Ref. Pressure Switch	NO		
30	Expansion Valve	YES		4.3" TFT LCD	YES		
31	Heat Exchanger	YES		PCB Controller	YES		
32	Ref. Pressure Transmitter	YES					
33	Air Pressure Gauge	YES					
34	Ref. Pressure Gauge	YES					
NOTES							
35							
36							
37							
38							
39							
40							
41							
42							
43							
44							
45							
46							

10-NM000P-0-GAH-VSD
CON SWG

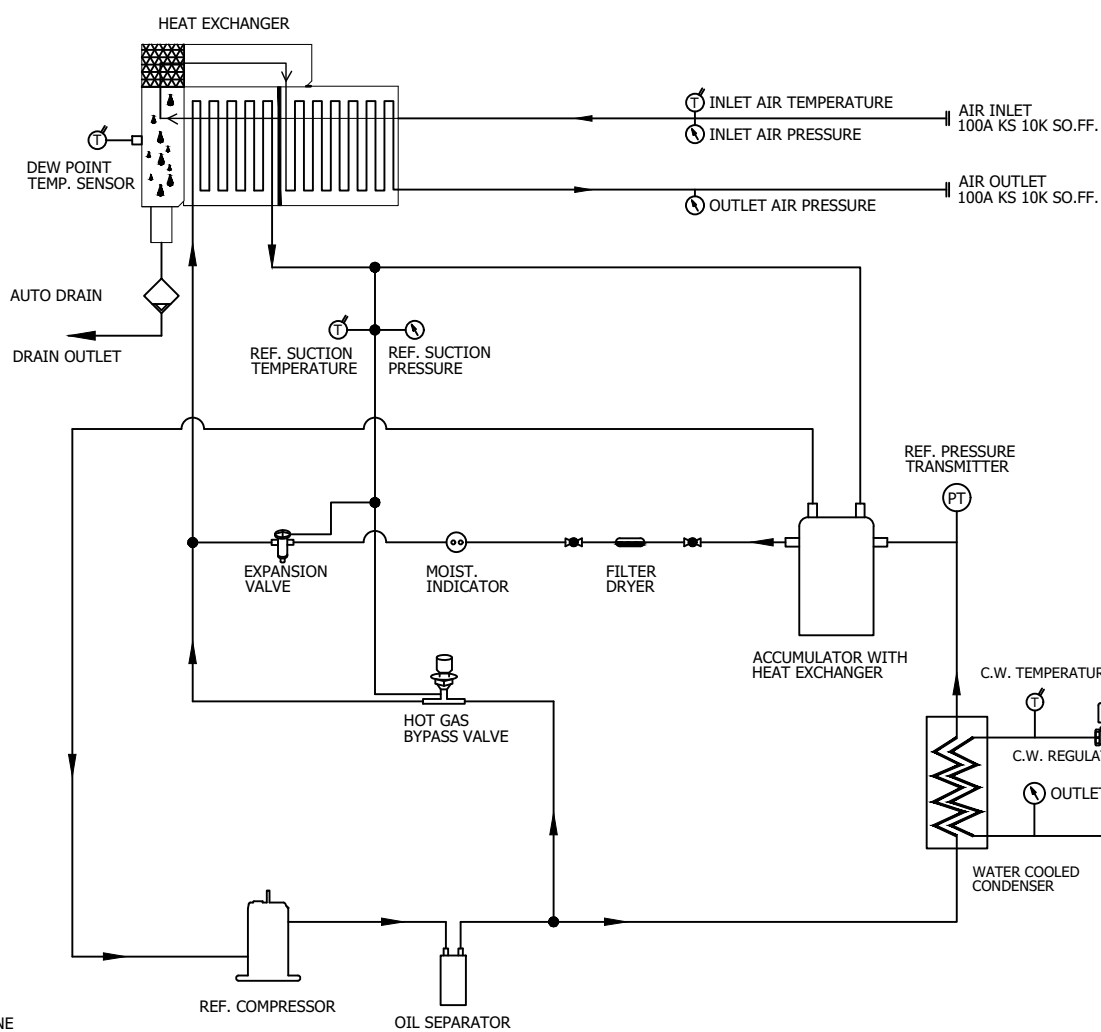
SPECIFICATION	
INLET AIR TEMPERATURE	38°C
AMBIENT TEMPERATURE	32°C
C.W. TEMP. / PRESS.	32°C / 2~3 barg
INLET AIR PRESSURE	7 barg
CAPACITY	59.0 Nm ³ /min
AIR IN/OUT CONNECTION	100A KS 10K SO.FF.
C.W IN/OUT CONNECTION	PT 40A
DIMENSION(WXDH, mm)	800 X 1,591 X 1,915
WEIGHT	500 kg
POWER CONSUMPTION	8.9 kW
POWER SUPPLY	380/440V - 3PH - 50/60Hz



REV.	DATE	DESCRIPTION	ENG	CHK	APPD	APPD
2020.09.23		ISSUED FOR REFERENCE				
PROJECT						
MANUFACTURER						
GSA Global Standard Air & Gas						
TITLE						
OUTLINE DRAWING						
ITEM NO.	HYD-400WN	DWG NO.	GSA-HYD-0400WN-01			
SCALE	NONE					

(A4 : 297mm x 210mm)

Z0-NM00P-0-GAH-YSD
CON SWG

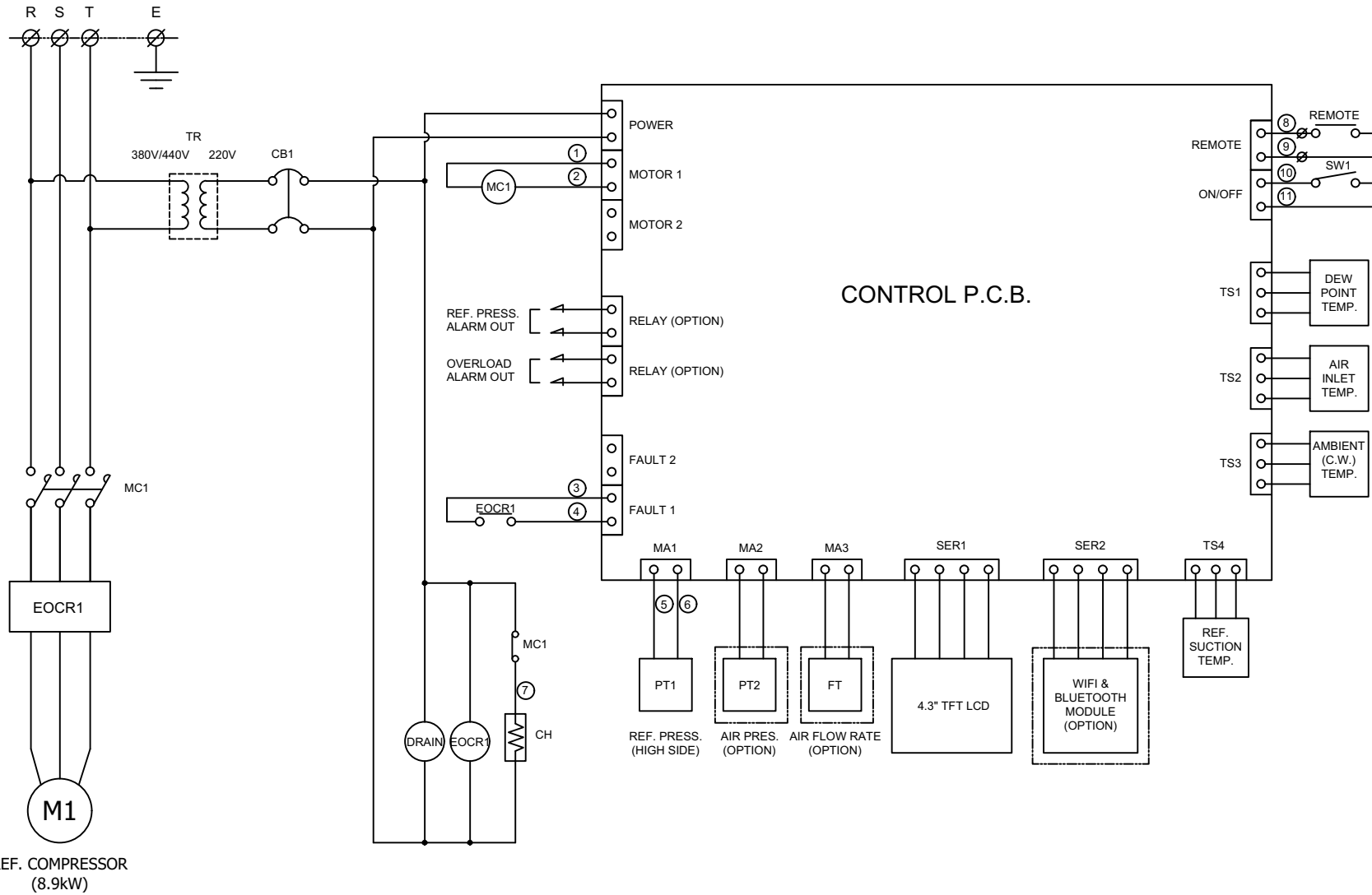


- ← AIR INLET LINE
- AIR OUTLET LINE
- ← REF. LOW PRESS. LINE
- REF. HIGH PRESS. LINE

DEW POINT	2~10°C @ FDP		
INLET AIR PRESSURE	7.0 barg		
INLET AIR TEMPERATURE	38°C		
CAPACITY	59.0 Nm ³ /min		
16	PRESS. GAUGE	OUTLET COOLING WATER	1
15	PRESS. GAUGE	OUTLET AIR	1
14	PRESS. GAUGE	INLET AIR	1
13	PRESS. GAUGE	REF. SUCTION	1
12	AUTO DRAIN	PT 15A	1
11	HGBV	-	1
10	HEAT EXCHANGER	400 HP	1
9	EXPANSION VALVE	10 TON	1
8	MOIST. INDICATOR	5/8"	1
7	FILTER DRYER	5/8"	1
6	ACCUMULATOR WITH HEAT EXCHANGER	-	1
5	REF. PRESS. TRANSMIT.	-1 ~ 35 BAR	1
4	C.W. REGUL. V/V	PT 40A	1
3	W.C. CONDENSER	10 HP (CONDENSING CAPACITY)	1
2	OIL SEPARATOR	-	1
1	REF. COMPRESSOR	10 HP (COOLING CAPACITY)	1
NO.	PART NAME	DESCRIPTION	QTY

REV.	DATE	DESCRIPTION	ENG	CHK	APPD	APPD
2020.09.23		ISSUED FOR REFERENCE				
PROJECT						
MANUFACTURER						
GSA Global Standard Air & Gas						
TITLE						
PIPING & INSTRUMENTATION DRAWING						
ITEM NO.	HYD-400W	DWG NO.	GSA-HYD-0400W-02			
SCALE	NONE					

(A4 : 297mm x 210mm)



POWER SOURCE		
AC 380/440V, 3Ph, 50/60Hz		
11	PT1	REF. PRESSURE TRANSMITTER
10	TR	TRANSFORMER
9	SW1	SYSTEM ON/OFF SWITCH
8	CB1	CIRCUIT BREAKER(CTRL)
7	MCCB1	CIRCUIT BREAKER(MAIN)
6	TS1 ~ TS4	TEMP. SENSOR
5	CB1	CIRCUIT BREAKER(CTRL)
4	MCCB1	CIRCUIT BREAKER(MAIN)
3	MC1	MAGNETIC CONTACTOR
2	EOCR1	OVERLOAD RELAY
1	M1	REF. COMPRESSOR
NO.	SYMBOL	DESCRIPTION

***REVERSE PHASE WARNING**
 Be sure to check the operating condition of the refrigerant compressor.
 - When the refrigerant compressor is operating, the refrigerant suction pressure will be lowered.
 When operating in reverse phase, the refrigerant compressor is damaged.
 In case of reverse phase, change the position of 2 wires out of 3 wires of the power supply line.
 Problems caused by incorrect power connection are not guaranteed.

REV. NO.	DATE	DESCRIPTION	ENGR	CHK	APPR	APPR	APPR
2020.09.23		ISSUED FOR REFERENCE					

PROJECT: _____

MANUFACTURER: **GSA**
Global Service Air & Gas

TITLE: **WIRING DRAWING**

ITEM NO.	HYD-400WN	DWG NO.	GSA-HYD-0400WN-03	REV.	△
SCALE	NONE				

(A4 : 297mm x 210mm)