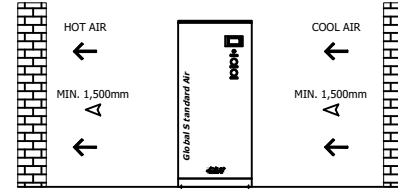
	Refrigerated Air Chiller		Rev.	Date	Prepared By	Checked By	Approved By
			A	2020.09.22	WOO.I.H.	JO.S.J.	KIM.H.W.
	Air Cooled Type		B				
			C				
			D				
Project Name		-	Model Name		HYD-400CH		
SPECIFICATION							
1							
2	Supply Voltage	380V	Inlet Flow Rate	56	Nm3/min		
3	Phase	3PH	Inlet Pressure	7	barg		
4	Frequency	60Hz	Inlet Temp.	32	°C		
5	Control use	220V	Inlet Air Condition	Dried Air			
6	Fluid	Compressed Air	Outlet Flow Rate	56	Nm3/min		
7	Location	Indoor	Outlet Pressure	6.8	barg		
8	Design Code	Maker STD.	Outlet Temp.	10	°C		
9	Area Class	Non-Hazardous	Pressure Drop	0.2	bar		
10			Design Pressure	14	barg		
11			Design Temperature	70	°C		
12			Ambient Temperature	32	°C		
CONSTRUCTION							
13							
14	Refrigerant	R-22	Dimension (W x L x H)	900 X 1,591 X 1,915	mm		
15	Ref. Compressor Type	Scroll	Weight	560	kg		
16	Ref. Compressor Capacity	10 HP	Power Consumption	9.7	kW		
17	Condenser Type	Air Cooled	Inlet Connection	100A	KS 10K SO.FF.		
18	Condenser Fan Motor	0.4 kW	Outlet Connection	100A	KS 10K SO.FF.		
19		2 EA	Drain Connection(Optional)	15A	PT Female Screw		
20	Condenser Fan Size	450 mm	Color (Munsell)	5.7PB 4.1/9.9			
21	Condenser Capacity	10 HP		5.7PB 2.9/3.5			
22	Condenser Material	Aluminum & Copper					
23	Heat Exchanger Type	Block					
24	Heat Exchanger Material	Aluminum					
25	Ref. Control Device	TEV					
26							
27							
STANDRAD FEATURES AND CONTROL							
28							
29	Ref. Compressor	YES	Ref. Pressure Gauge	YES			
30	Air Cooled Condenser	YES	Air Pressure Gauge	YES			
31	Fan Motor	YES	Hot Gas Bypass Valve	NO			
32	Ref. Pressure Transmitter	YES	Accumulator with Heat Exchanger	YES			
33	Liquid Ref. Receiver	NO	Oil Separator	YES			
34	Filter Dryer	YES	4.3" TFT LCD	YES			
35	Moisture Indicator	YES	PCB Controller	YES			
36	Expansion Valve	YES					
37	Heat Exchanger	YES					
38	Temperature Sensor	YES					
NOTES							
39							
40							
41							
42							
43							
44							
45							
46							

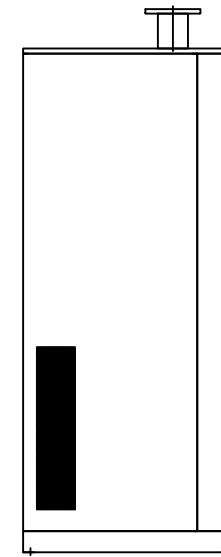
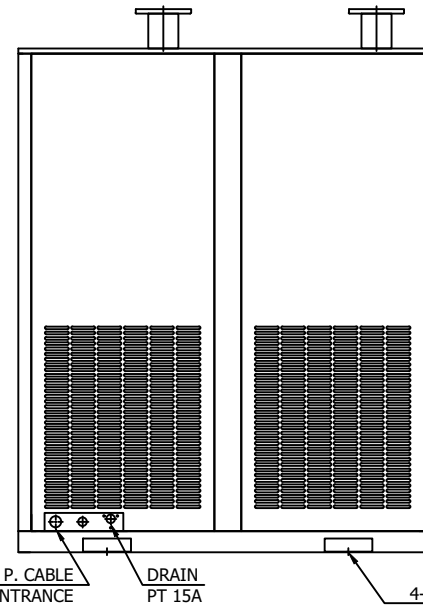
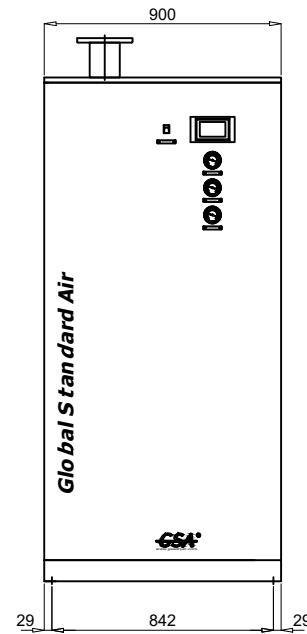
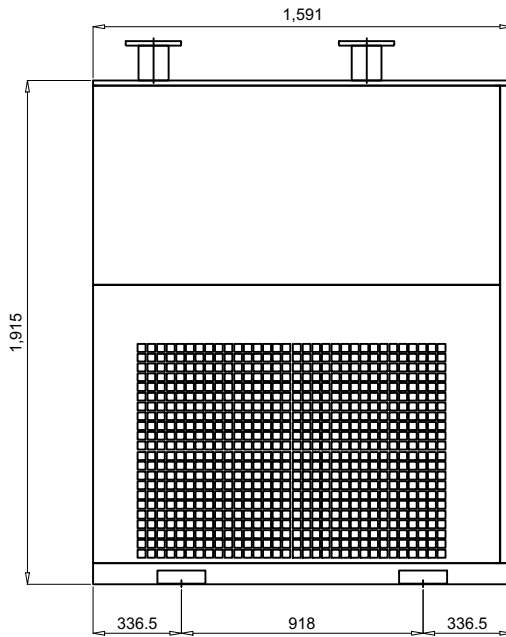
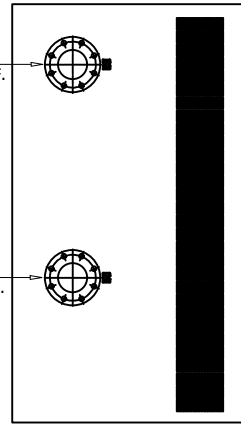
INLET/OUTLET AIR TEMP.	32°C / 10°C
INLET AIR PRESSURE	7 barg
INLET AIR CONDITION	DRIED AIR
CAPACITY	56.0 Nm ³ /min
IN/OUT CONNECTION	100A KS 10K SO.FF.
DIMENSION(WXDXH, mm)	900 X 1,591 X 1,915
WEIGHT	560 kg
POWER CONSUMPTION	9.7 kW
POWER SUPPLY	380/440V - 3PH - 50/60Hz


COOLING AIR DIRECTION



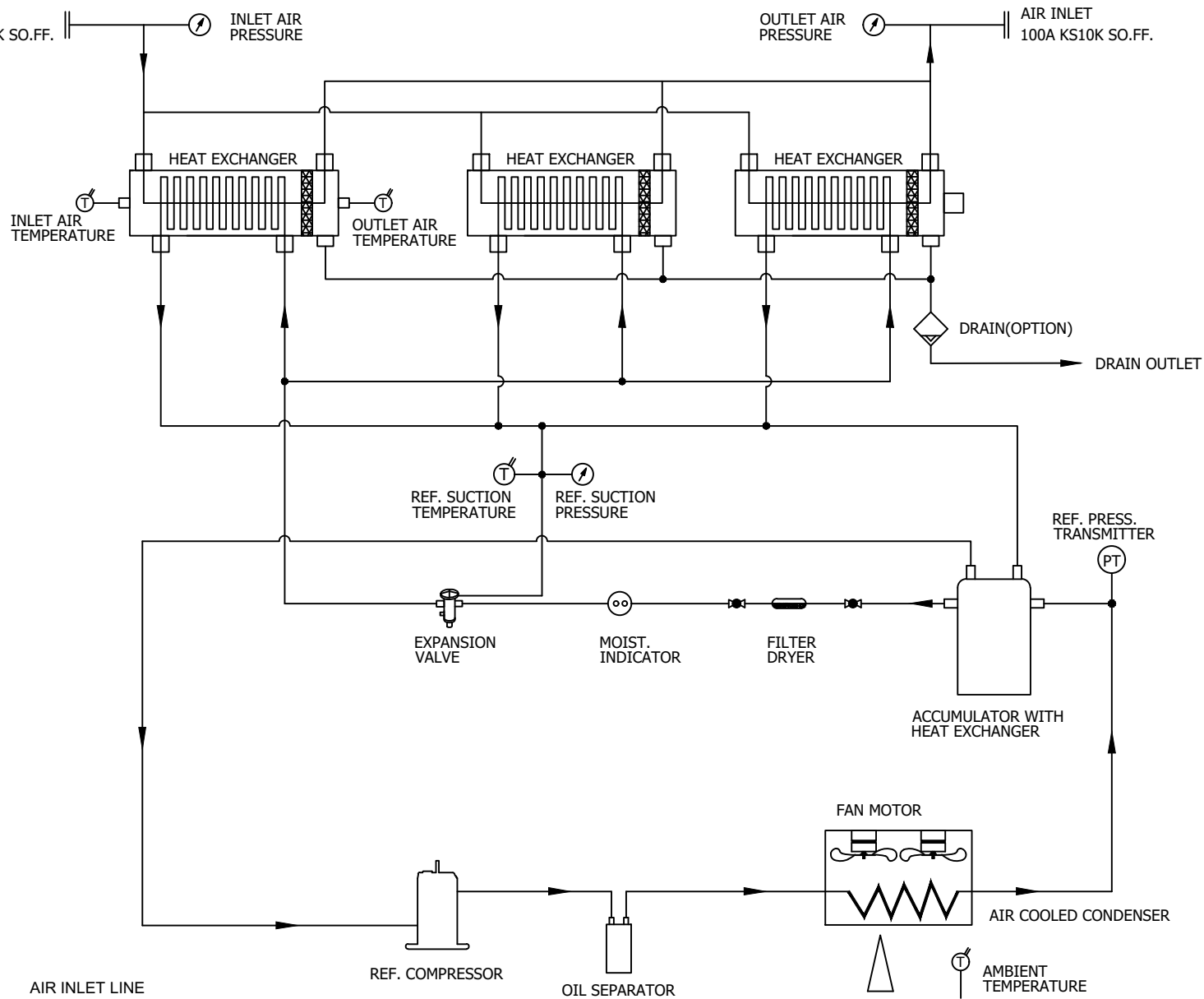
AIR OUTLET
100A KS 10K SO.FF.

AIR INLET
100A KS 10K SO.FF.




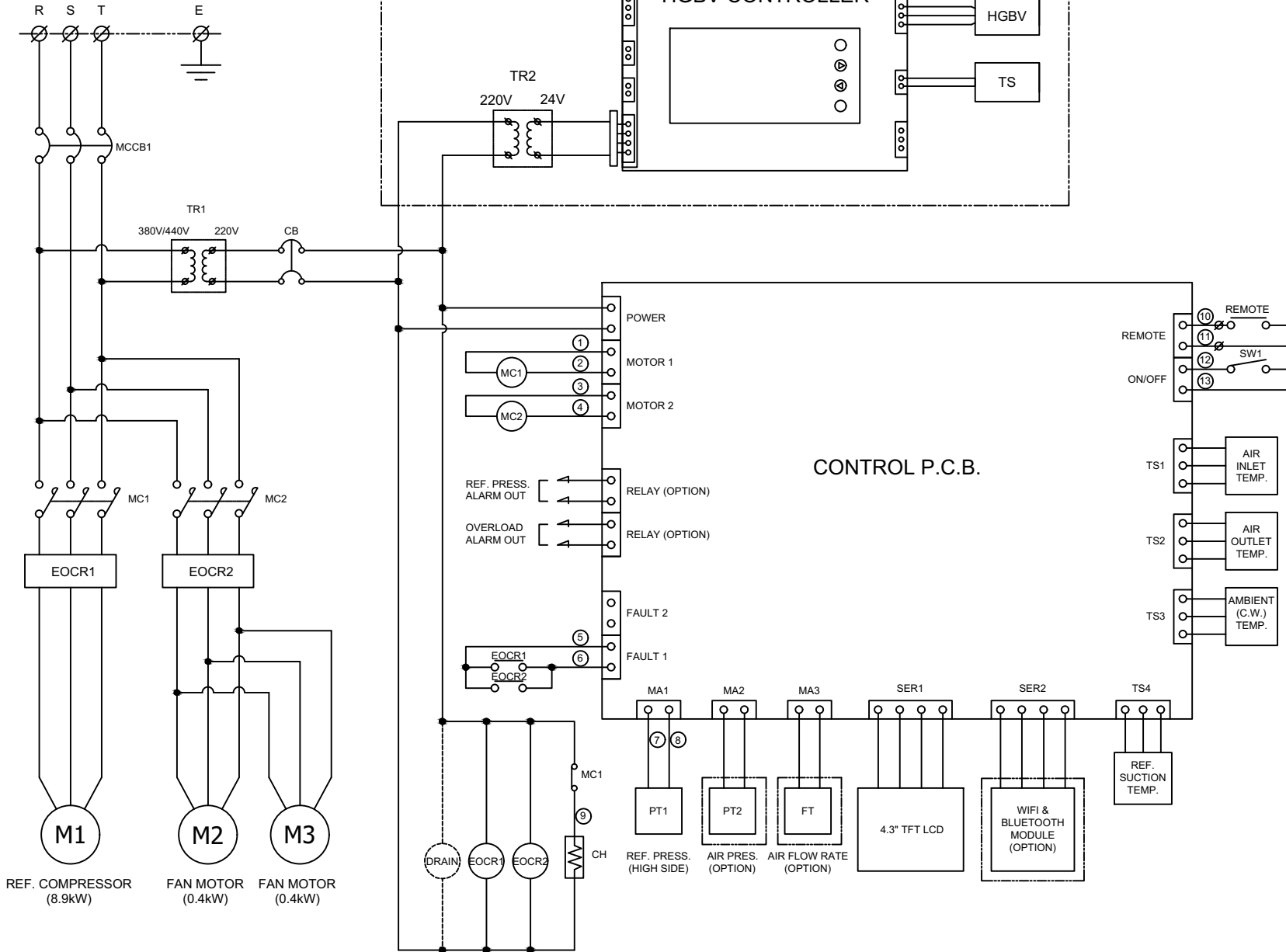
△										
△										
△										
△										
△										
REV. NO.	DATE	DESCRIPTION	DWG	CHK	APPD	APPD	APPD	APPD	APPD	
PROJECT	-									
MANUFACTURER	 Global Standard Air & Gas									
TITLE	OUTLINE DRAWING									
ITEM NO.	HYD-400CH	DWG NO.	GSA-HYD-0400CH-01						REV.	△
SCALE	NONE									

INLET/OUTLET AIR TEMP.		32°C / 10°C	
INLET AIR PRESSURE		7.0 BARG	
INLET AIR CONDITION		DRIED AIR	
CAPACITY		56.0 Nm ³ /min	
14	PRESS. GAUGE	OUTLET AIR	1
13	PRESS. GAUGE	INLET AIR	1
12	PRESS. GAUGE	REF. SUCTION	1
11	AUTO DRAIN	PT 15A	1
10	HEAT EXCHANGER	150 HP	3
9	EXPANSION VALVE	10 TON	1
8	MOIST. INDICATOR	5/8"	1
7	FILTER DRYER	5/8"	1
6	ACCUMULATOR WITH HEAT EXCHANGER	-	1
5	REF. PRESS. TRANSMIT.	-1 ~ 35 BAR	1
4	FAN MOTOR	0.4KW 6P ø500	2
3	A/C CONDENSER	10 HP (CONDENSING CAPACITY)	1
2	OIL SEPARATOR	-	1
1	REF. COMPRESSOR	10 HP (COOLING CAPACITY)	1
NO.	PART NAME	DESCRIPTION	QTY



- AIR INLET LINE
- AIR OUTLET LINE
- REF. LOW PRESS. LINE
- REF. HIGH PRESS. LINE

△										
△										
△										
△										
△	2020. 09. 18.	ISSUED FOR REFERENCE								
REV. NO.	DATE	DESCRIPTION	ENG	CHK	APPD	APPD	APPD	APPD	APPD	
PROJECT										
MANUFACTURER										
 Global Systems of Air & Gas										
TITLE										
PIPING & INSTRUMENTATION DRAWING										
ITEM NO.	HYD-400CH	DWG NO.	GSA-HYD-0400CH-02				REV.	△		
SCALE	NONE									



POWER SOURCE		
AC 380V/440V, 3Ph, 60Hz		
12	PT1	REF. PRESSURE TRANSMITTER
11	TR	TRANSFORMER
10	SW1	SYSTEM ON/OFF SWITCH
9	CH	REF. COMP. HEATER
8	DRAIN	AUTO DRAIN VALVE
7	TS1 ~ TS4	TEMP. SENSOR
6	CB1	CIRCUIT BREAKER(CTRL)
5	MCCB1	CIRCUIT BREAKER(MAIN)
4	MC1, MC2	MAGNETIC CONTACTOR
3	EOCR1, EOCR2	OVERLOAD RELAY
2	M2, M3	FAN MOTOR
1	M1	REF. COMPRESSOR
NO.	SYMBOL	DESCRIPTION

***REVERSE PHASE WARNING**

Be sure to check the rotation direction of the fan motor and the operating condition of the refrigerant compressor.

- The fan motor must rotate clockwise.
- When the refrigerant compressor is operating, the refrigerant suction pressure will be lowered.

When operating in reverse phase, the refrigerant compressor is damaged.

In case of reverse phase, change the position of 2 wires out of 3 wires of the power supply line.

Problems caused by incorrect power connection are not guaranteed.

△											
△											
△											
△											
△											
△											
△											
REV. NO.	DATE	DESCRIPTION	DWG	CHK	APPD	APPD	APPD	APPD	APPD	APPD	
PROJECT											
MANUFACTURER	GSA Global Service Automation & Control										
TITLE	WIRING DRAWING										
ITEM NO.	HYD-400CH	DWG NO.	GSA-HYD-0400CH-03							REV.	△
SCALE	NONE										