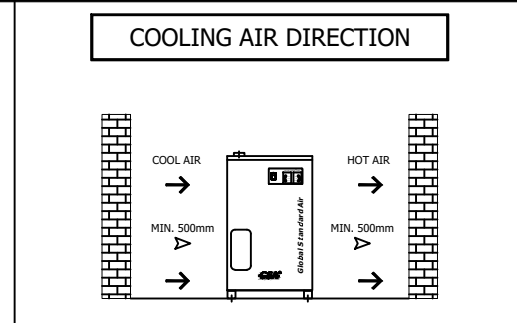
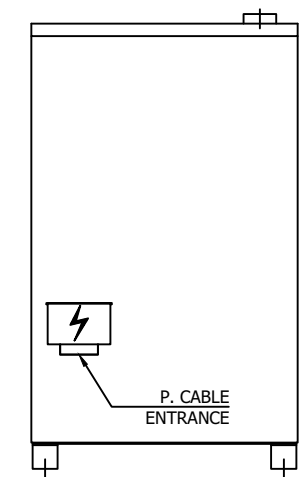
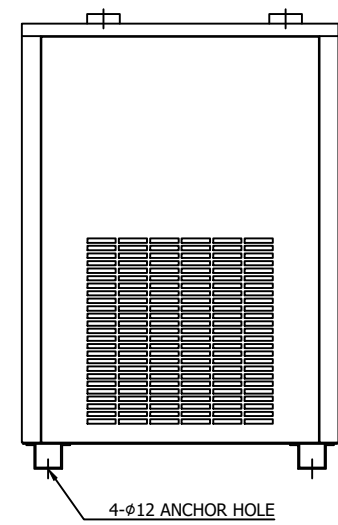
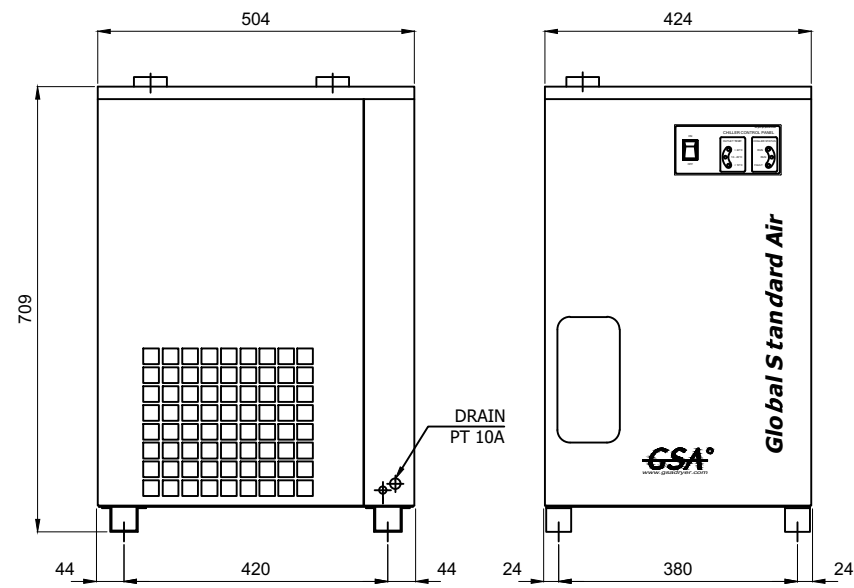
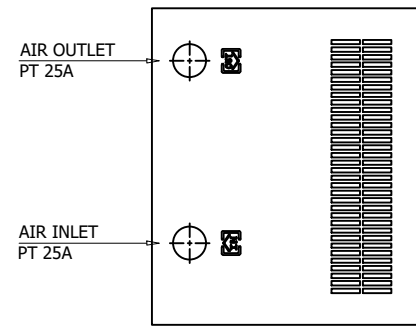
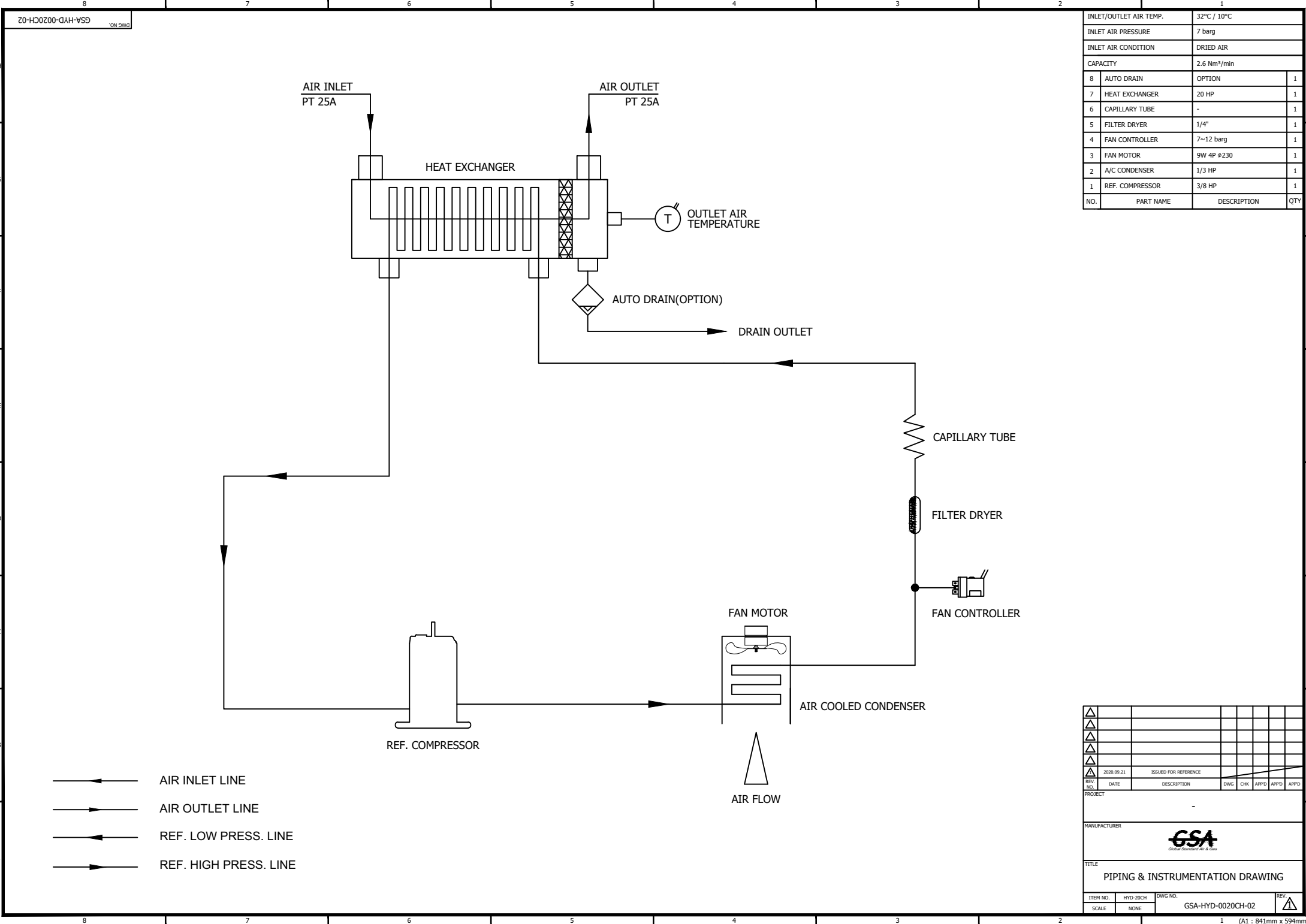
	Refrigerated Air Chiller	Rev.	Date	Prepared By	Checked By	Approved By
		A	2020.09.22	LEE.S.M.	JO.S.J.	KIM.H.W.
	B					
	C					
	D					
	Air Cooled Type					
Project Name		-		Model Name		HYD-20CH
SPECIFICATION						
1						
2	Supply Voltage	220V	Inlet Flow Rate	2.6	Nm3/min	
3	Phase	1PH	Inlet Pressure	7	barg	
4	Frequency	60Hz	Inlet Temp.	32	°C	
5	Control use	220V	Inlet Air Condition	Dried Air		
6	Fulid	Compressed Air	Outlet Flow Rate	2.6	Nm3/min	
7	Location	Indoor	Outlet Pressure	6.8	barg	
8	Design Code	Maker STD.	Outlet Temp.	10	°C	
9	Area Class	Non-Hazardous	Pressure Drop	0.2	bar	
10			Design Pressure	14	barg	
11			Design Temperature	70	°C	
12			Ambient Temperature	32	°C	
CONSTRUCTION						
13						
14	Refrigerant	R-134A	Dimension (W x L x H)	424 X 504 X 709	mm	
15	Ref. Compressor Type	Recipro Hemertic	Weight	41	kg	
16	Ref. Compressor Capacity	3/8 HP	Power Consumption	0.51	kW	
17	Condenser Type	Air Cooled	Inlet Connection	25A	PT Female Screw	
18	Condenser Fan Motor	9 W	Outlet Connection	25A	PT Female Screw	
19		1 EA	Drain Connection(Optional)	10A	PT Female Screw	
20	Condenser Fan Size	230 mm	Color (Munsell)	5.7PB 4.1/9.9		
21	Condenser Capacity	1/3 HP		5.7PB 2.9/3.5		
22	Condenser Material	Aluminum & Copper				
23	Heat Exchanger Type	Block				
24	Heat Exchanger Material	Aluminum				
25	Ref. Control Device	Capillary Tube				
26						
27						
STANDRAD FEATURES AND CONTROL						
28						
29	Ref. Compressor	YES	PCB Controller	YES	YES	
30	Air Cooled Condenser	YES	Air Pressure Gauge	NO	NO	
31	Fan Motor	YES	Ref. Pressur Gauge	NO	NO	
32	Fan Controller	YES	Suction Line Accumulator	NO	NO	
33	Ref. High Pressure Switch	NO	Liquid Ref. Receiver	NO	NO	
34	Filter Dryer	YES				
35	Capillary Tube	YES				
36	Heat Exchanger	YES				
37	Temperature Sensor	YES				
38	Hot Gas Bypass Valve	NO				
NOTES						
39						
40						
41						
42						
43						
44						
45						
46						




SPECIFICATION	
INLET/OUTLET AIR TEMP.	32°C / 10°C
INLET AIR PRESSURE	7 barg
INLET AIR CONDITION	DRIED AIR
CAPACITY	2.6 Nm ³ /min
IN/OUT CONNECTION	PT 25A
DIMENSION(WXDXH, mm)	424 X 504 X 709
WEIGHT	41 kg
POWER CONSUMPTION	0.51 kW
POWER SUPPLY	220V - 1PH - 60Hz

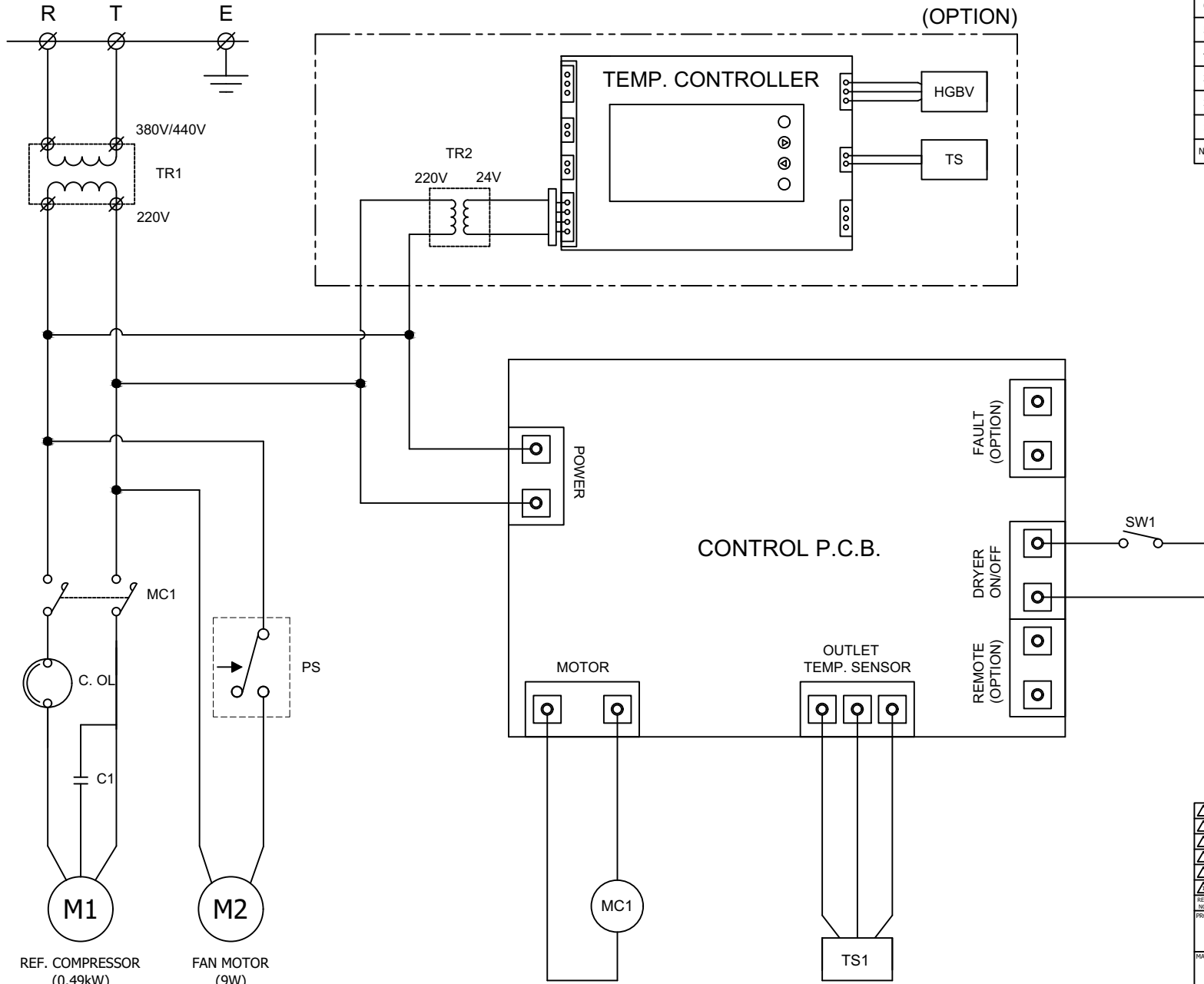


△										
△										
△										
△										
△										
REV. NO.	2020.09.21	ISSUED FOR REFERENCE								
PROJECT	-									
MANUFACTURER										
TITLE	OUTLINE DRAWING									
ITEM NO.	HYD-20CH	DWG NO.	GSA-HYD-0020CH-01						REV.	△
SCALE	NONE									




INLET/OUTLET AIR TEMP.		32°C / 10°C
INLET AIR PRESSURE		7 barg
INLET AIR CONDITION		DRIED AIR
CAPACITY		2.6 Nm ³ /min
8	AUTO DRAIN	OPTION 1
7	HEAT EXCHANGER	20 HP 1
6	CAPILLARY TUBE	- 1
5	FILTER DRYER	1/4" 1
4	FAN CONTROLLER	7~12 barg 1
3	FAN MOTOR	9W 4P #230 1
2	A/C CONDENSER	1/3 HP 1
1	REF. COMPRESSOR	3/8 HP 1
NO.	PART NAME	DESCRIPTION QTY

△											
△											
△											
△											
△	2020.09.21	ISSUED FOR REFERENCE									
REV. NO.	DATE	DESCRIPTION	ENWG	CHK	APPD	APPD	APPD	APPD	APPD		
PROJECT											
MANUFACTURER											
 <small>Global Services Africa & Asia</small>											
TITLE											
PIPING & INSTRUMENTATION DRAWING											
ITEM NO.	HYD-20CH	DWG NO.	GSA-HYD-0020CH-02							REV.	△
SCALE	NONE										



POWER SOURCE
AC 220/380/440V, 1Ph, 50/60Hz

8	SW1	START/STOP SWITCH
7	TR1	TRANSFORMER(OPTION)
6	TS1	OUTLET TEMP. SENSOR
5	PS	FAN CONTROLLER
4	MC1	MAGNETIC CONTACTOR
3	C1	STARTING CAPACITOR
2	M2	FAN MOTOR
1	M1	REF. COMPRESSOR
NO.	SYMBOL	DESCRIPTION

△											
△											
△											
△											
△	2020.09.21	ISSUED FOR REFERENCE									
REV. NO.	DATE	DESCRIPTION	ENWG	CHK	APPD	APPD	APPD	APPD			
PROJECT											
MANUFACTURER											
 GSA <small>Global Service Automation & Control</small>											
TITLE											
WIRING DRAWING											
ITEM NO.	HYD-20CH	DWG NO.	GSA-HYD-0020CH-03							REV.	△
SCALE	NONE										