



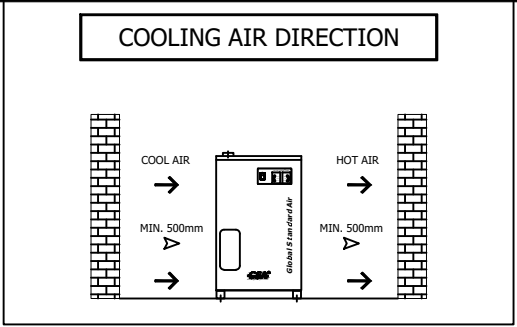
## Refrigerated Air Chiller

Air Cooled Type

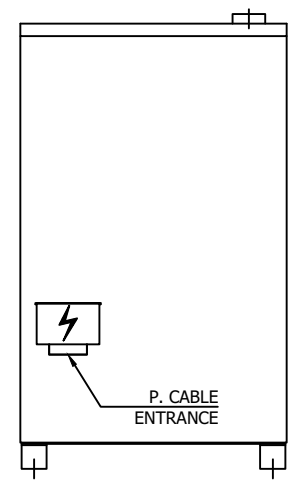
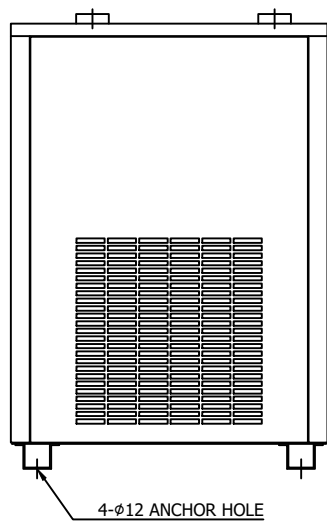
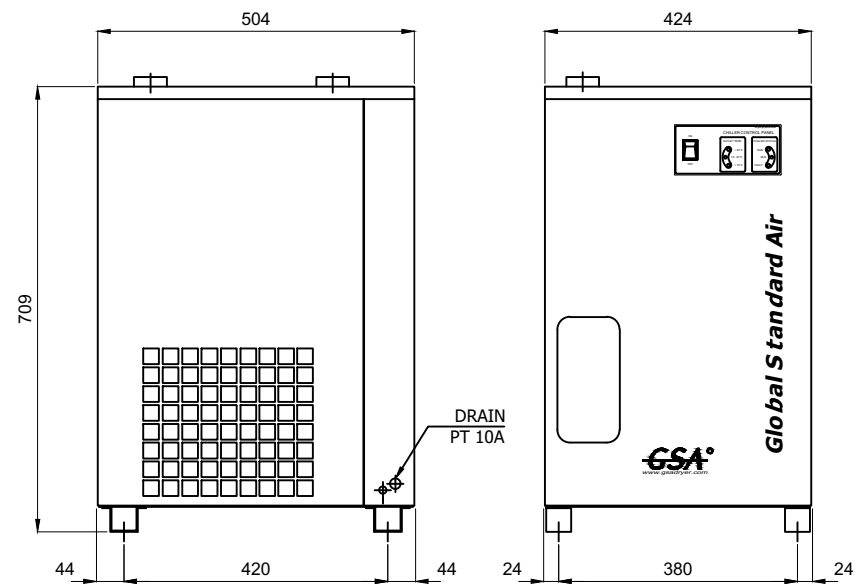
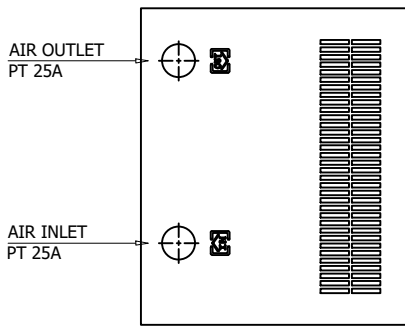
Rev.	Date	Prepared By	Checked By	Approved By
A	2020.09.22	WOO.I.H.	JO.S.J.	KIM.H.W.
B				
C				
D				

Project Name	-	Model Name	HYD-15CH
--------------	---	------------	----------

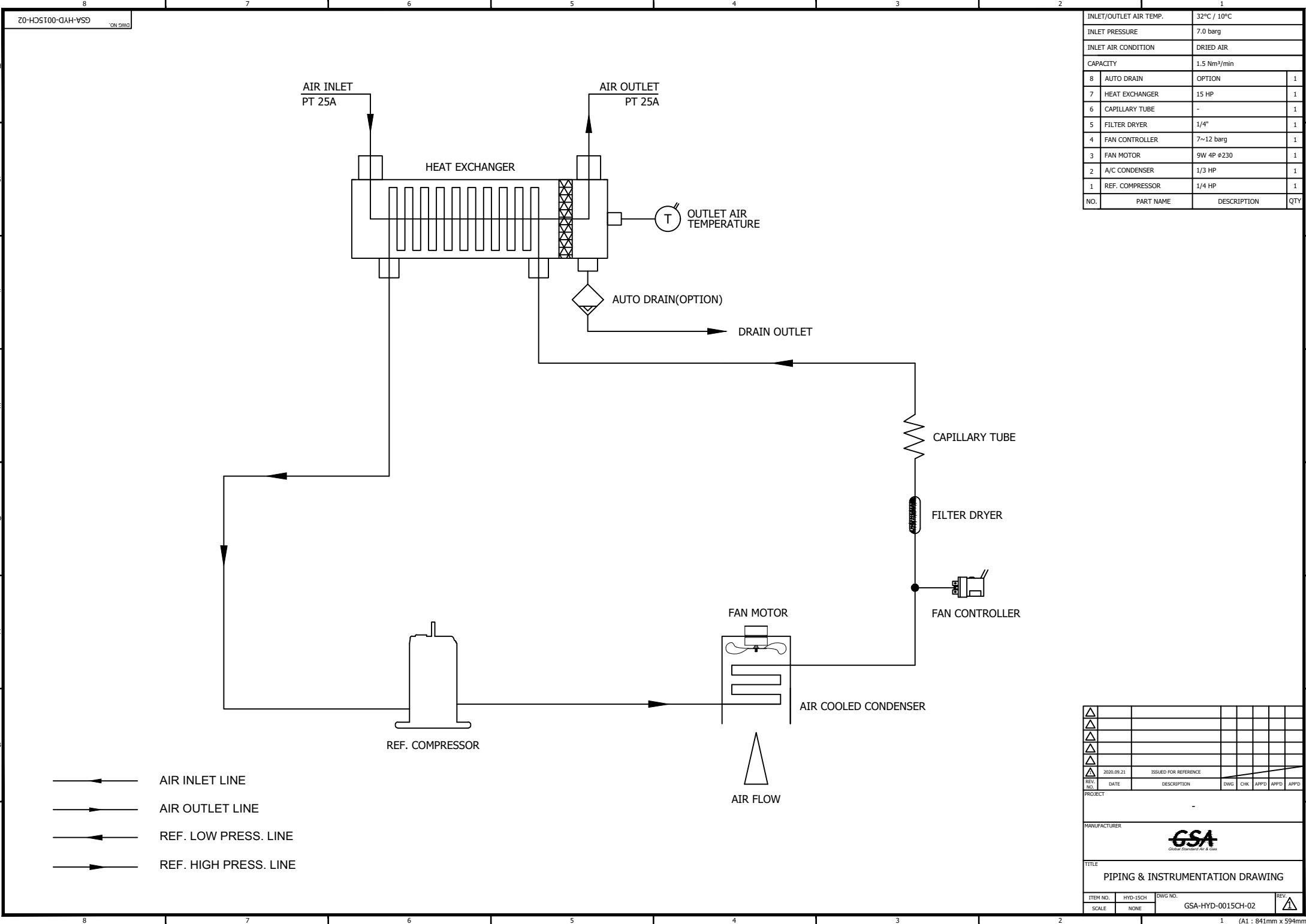
SPECIFICATION				
1				
2	Supply Voltage	220V	Inlet Flow Rate	1.5 Nm3/min
3	Phase	1PH	Inlet Pressure	7 barg
4	Frequency	60Hz	Inlet Temp.	32 °C
5	Control use	220V	Inlet Air Condition	Dried Air
6	Fulid	Compressed Air	Outlet Flow Rate	1.5 Nm3/min
7	Location	Indoor	Outlet Pressure	6.8 barg
8	Design Code	Maker STD.	Outlet Temp.	10 °C
9	Area Class	Non-Hazardous	Pressure Drop	0.2 bar
10			Design Pressure	14 barg
11			Design Temperature	70 °C
12			Ambient Temperature	32 °C
CONSTRUCTION				
14	Refrigerant	R-134A	Dimension (W x L x H)	424 X 504 X 709 mm
15	Ref. Compressor Type	Recipro Hemertic	Weight	41 kg
16	Ref. Compressor Capacity	1/4 HP	Power Consumption	0.39 kW
17	Condenser Type	Air Cooled	Inlet Connection	25A PT Female Screw
18	Condenser Fan Motor	9 W	Outlet Connection	25A PT Female Screw
19		1 EA	Drain Connection(Optional)	10A PT Female Screw
20	Condenser Fan Size	230 mm	Color (Munsell)	5.7PB 4.1/9.9
21	Condenser Capacity	1/3 HP		5.7PB 2.9/3.5
22	Condenser Material	Aluminum & Copper		
23	Heat Exchanger Type	Block		
24	Heat Exchanger Material	Aluminum		
25	Ref. Control Device	Capillary Tube		
26				
27				
STANDRAD FEATURES AND CONTROL				
29	Ref. Compressor	YES	PCB Controller	YES
30	Air Cooled Condenser	YES	Air Pressure Gauge	NO
31	Fan Motor	YES	Ref. Pressur Gauge	NO
32	Fan Controller	YES	Suction Line Accumulator	NO
33	Ref. High Pressure Switch	NO	Liquid Ref. Receiver	NO
34	Filter Dryer	YES		
35	Capillary Tube	YES		
36	Heat Exchanger	YES		
37	Temperature Sensor	YES		
38	Hot Gas Bypass Valve	NO		
NOTES				
40				
41				
42				
43				
44				
45				
46				



SPECIFICATION	
INLET/OUTLET AIR TEMP.	32°C / 10°C
INLET AIR PRESSURE	7 barg
INLET AIR CONDITION	DRIED AIR
CAPACITY	1.5 Nm <sup>3</sup> /min
IN/OUT CONNECTION	PT 25A
DIMENSION(WXDXH, mm)	424 X 504 X 709
WEIGHT	41 kg
POWER CONSUMPTION	0.39 kW
POWER SUPPLY	220V - 1PH - 60Hz




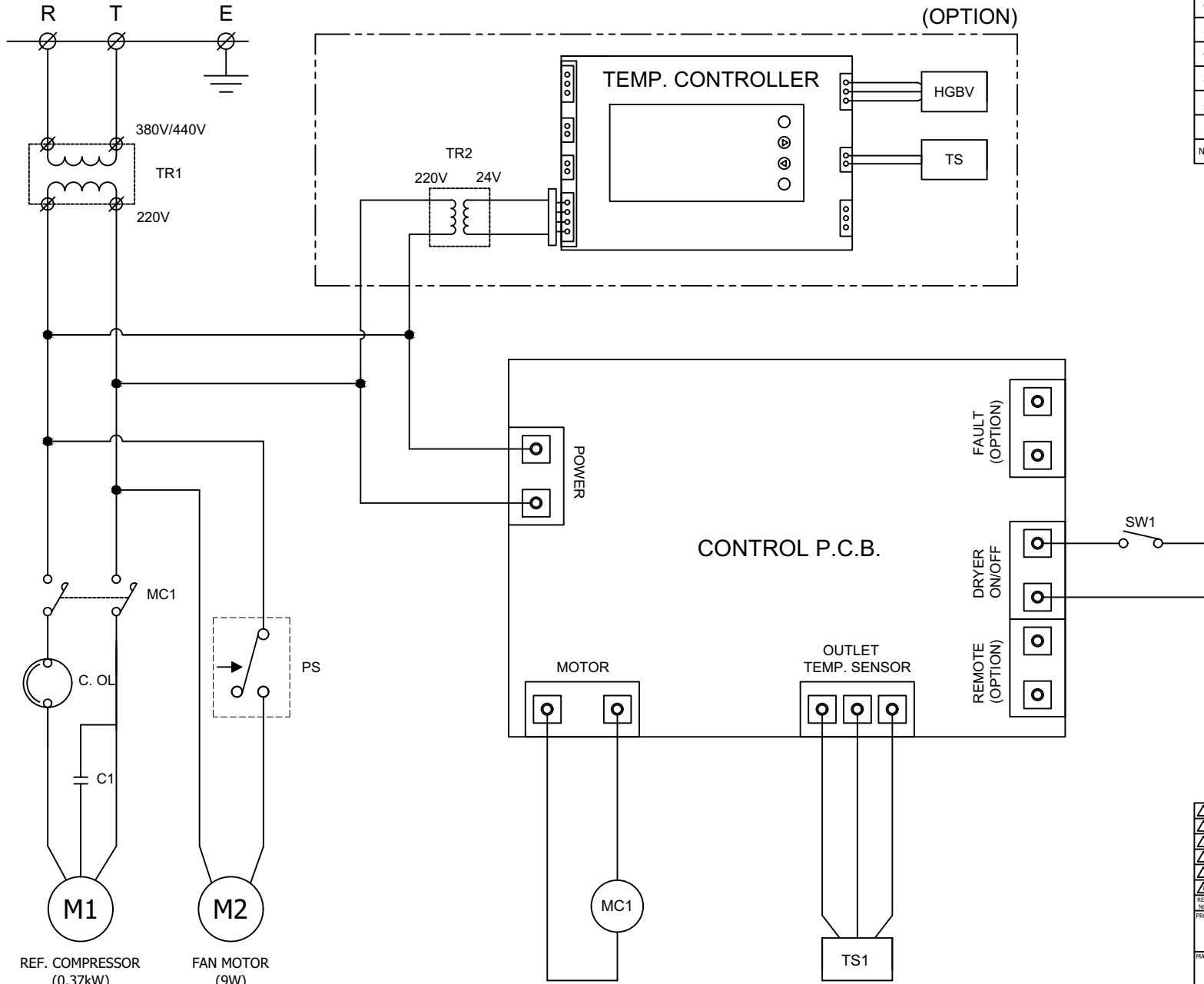
△											
△											
△											
△											
△											
REV. NO.	2020.09.21	ISSUED FOR REFERENCE	ENG.	CHK.	APPD.	APPD.	APPD.	APPD.	APPD.		
PROJECT											
MANUFACTURER											
TITLE											
OUTLINE DRAWING											
ITEM NO.	HYD-15CH	DWG NO.	GSA-HYD-0015CH-01							REV.	△
SCALE	NONE										



- ← AIR INLET LINE
- AIR OUTLET LINE
- ← REF. LOW PRESS. LINE
- REF. HIGH PRESS. LINE


INLET/OUTLET AIR TEMP.		32°C / 10°C
INLET PRESSURE		7.0 barg
INLET AIR CONDITION		DRIED AIR
CAPACITY		1.5 Nm <sup>3</sup> /min
8	AUTO DRAIN	OPTION 1
7	HEAT EXCHANGER	15 HP 1
6	CAPILLARY TUBE	- 1
5	FILTER DRYER	1/4" 1
4	FAN CONTROLLER	7~12 barg 1
3	FAN MOTOR	9W 4P #230 1
2	A/C CONDENSER	1/3 HP 1
1	REF. COMPRESSOR	1/4 HP 1
NO.	PART NAME	DESCRIPTION QTY

△											
△											
△											
△											
△	2020.09.21	ISSUED FOR REFERENCE									
REV. NO.	DATE	DESCRIPTION	ENWG	CHK	APPD	APPD	APPD	APPD			
PROJECT											
MANUFACTURER											
 <small>Global Service Automation &amp; Control</small>											
TITLE											
PIPING & INSTRUMENTATION DRAWING											
ITEM NO.	HYD-15CH	DWG NO.	GSA-HYD-0015CH-02							REV.	△
SCALE	NONE										



POWER SOURCE  
AC 220/380/440V, 1Ph, 50/60Hz

8	SW1	START/STOP SWITCH
7	TR1	TRANSFORMER(OPTION)
6	TS1	OUTLET TEMP. SENSOR
5	PS	FAN CONTROLLER
4	MC1	MAGNETIC CONTACTOR
3	C1	STARTING CAPACITOR
2	M2	FAN MOTOR
1	M1	REF. COMPRESSOR
NO.	SYMBOL	DESCRIPTION

△											
△											
△											
△											
△	2020.09.21	ISSUED FOR REFERENCE									
REV. NO.	DATE	DESCRIPTION	ENG	CHK	APPD	APPD	APPD	APPD			
PROJECT											
MANUFACTURER											
											
TITLE											
WIRING DRAWING											
ITEM NO.	HYD-15CH	DWG NO.	GSA-HYD-0015CH-03							REV.	△
SCALE	NONE										