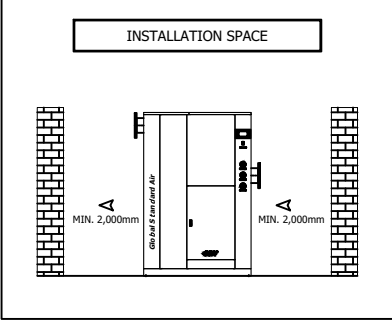
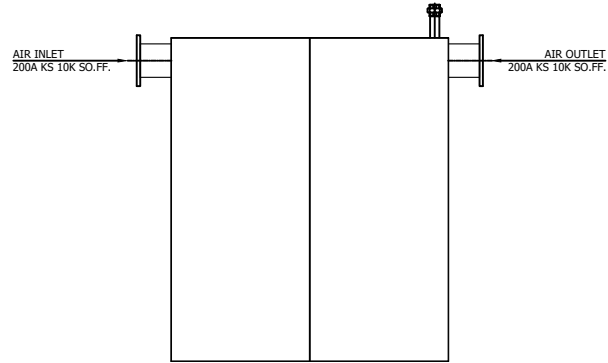
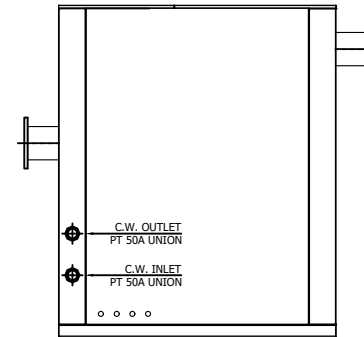
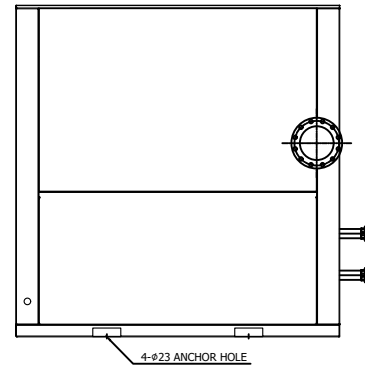
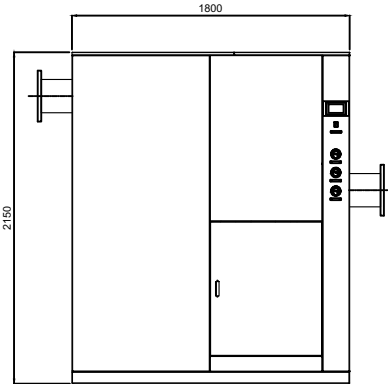
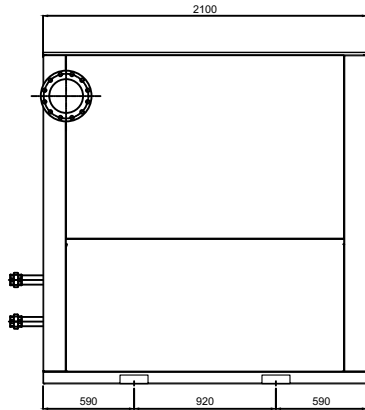
	Refrigerated Air Dryer for High Temp.		Rev.	Date	Prepared By	Checked By	Approved By
			A	2020.09.23	WOO.I.H.	JO.S.J.	KIM.H.W.
	Water Cooled Type		B				
			C				
			D				
Project Name		-	Model Name		HYD-1200HTW		
SPECIFICATION							
1							
2	Supply Voltage	380V	Inlet Flow Rate	180	Nm ³ /min		
3	Phase	3PH	Inlet Pressure	7	barg		
4	Frequency	60Hz	Inlet Temperature	45	°C		
5	Control use	220V	Outlet Flow Rate	180	Nm ³ /min		
6	Fulid	Compressed Air	Outlet Pressure	6.8	barg		
7	Location	Indoor	Outlet Temperature	33±5	°C		
8	Design Code	Maker STD.	Pressure Drop	0.2	bar		
9	Area Class	Non-Hazardous	Outlet Dew Point	2~10	°C@PDP		
10	Cooling Water Capacity	395 L/min	Design Pressure	9.7	barg		
11	Cooling Water Pressure	2 ~ 3 barg	Design Temperature	70	°C		
12	Cooling Water Temperature	32 °C	Ambient Temperature	32	°C		
CONSTRUCTION							
13							
14	Refrigerant	R-22	Dimension (W x L x H)	1,800 X 2,100 X 2,150	mm		
15	Ref. Compressor Type	Scroll	Weight	1,450	kg		
16	Ref. Compressor Capacity	40 HP	Power Consumption	37	kW		
17	Condenser Type	Water Cooled	Inlet Connection	200A	KS 10K SO.FF.		
18	Condenser Capacity	40 HP	Outlet Connection	200A	KS 10K SO.FF.		
19	Heat Exchanger Type	Block	Cooling Water Connection	50A	PT Union		
20	Heat Exchanger Material	Aluminum	Drain Connection	15A	PT Female Screw		
21	Ref. Control Device	TEV	Color (Munsell)	5.7PB 4.1/9.9			
22	Temp. Control Device	Hot Gas Bypass Valve		5.7PB 2.9/3.5			
23	Drain Trap Type	Level Sensor					
STANDRAD FEATURES AND CONTROL							
24							
25	Ref. Compressor	YES	Auto Drain	YES			
26	Water Cooled Condenser	YES	Hot Gas Bypass Valve	YES			
27	Cooling Water Regulating Valve	YES	Suction Line Accumulator	YES			
28	Liquid Ref. Receiver	YES	Oil Separator	YES			
29	Filter Dryer	YES	Ref. Pressure Switch	NO			
30	Expansion Valve	YES	4.3" TFT LCD	YES			
31	Heat Exchanger	YES	PCB Controller	YES			
32	Ref. Pressure Transmitter	YES					
33	Air Pressure Gauge	YES					
34	Ref. Pressure Gauge	YES					
NOTES							
35							
36							
37							
38							
39							
40							
41							
42							
43							
44							
45							
46							

10-M1H0021-GAH-VSD
CON DWG



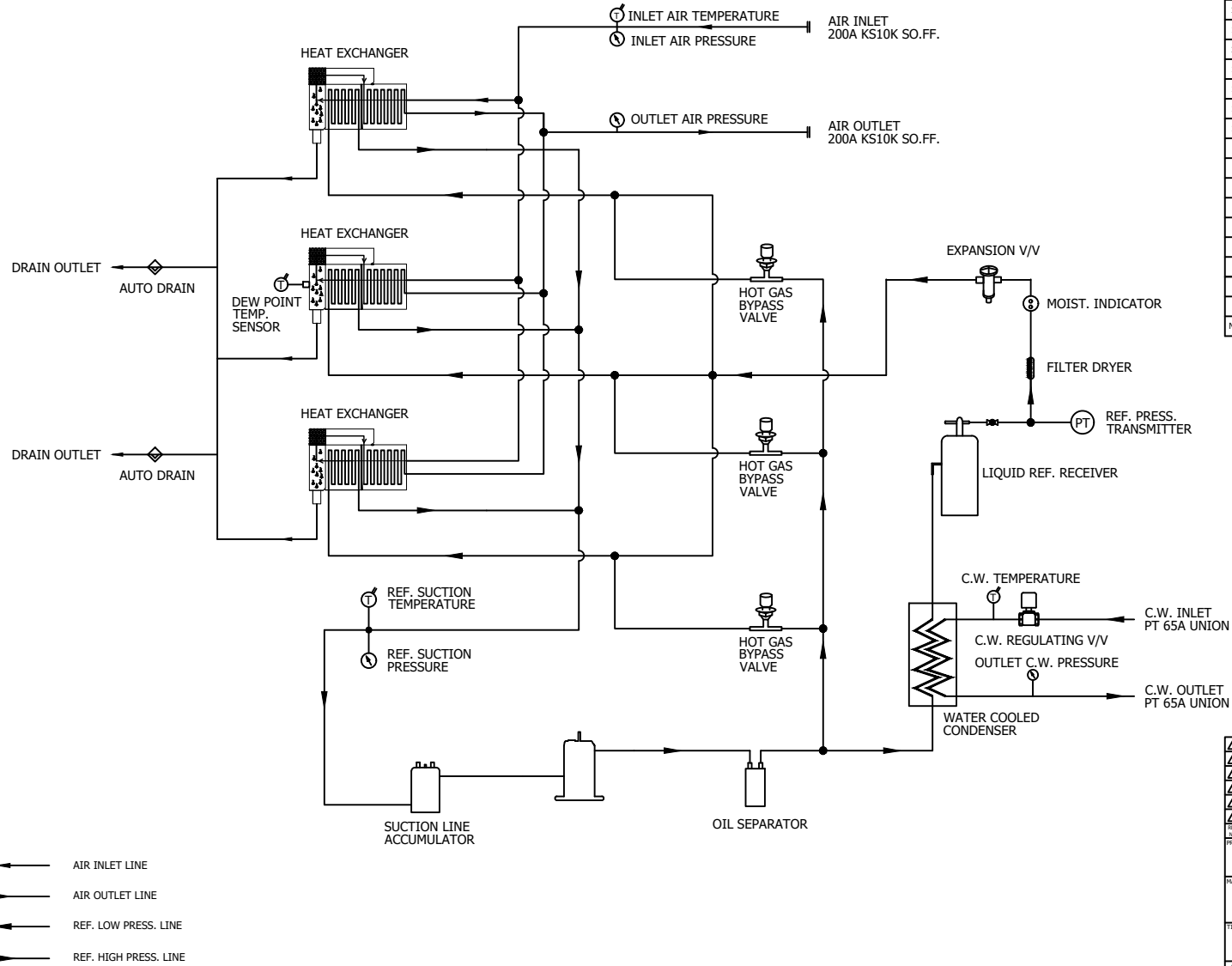
SPECIFICATION	
INLET TEMPERATURE	45°C
AMBIENT TEMPERATURE	32°C
INLET AIR PRESSURE	7 barg
CAPACITY	180 Nm ³ /min
AIR IN/OUT CONNECTION	200A KS 10K SO.FF.
C.W. IN/OUT CONNECTION	PT 50A
C.W. TEMP. / PRESSURE	32°C / 2 ~ 3 barg
DIMENSION(WXDXH, mm)	1,800 X 2,100 X 2,150
WEIGHT	1,450 kg
POWER CONSUMPTION	37 kW
POWER SUPPLY	380/440V - 3PH - 50/60HZ



△																				
△																				
△																				
△																				
△																				
△	2020.09.28	ISSUED FOR REFERENCE																		
REV.	DATE	DESCRIPTION	ENG	CHK	APPD	APPD														
PROJECT																				
MANUFACTURER																				
												 GSA Global Standard Air & Gas								
TITLE																				
OUTLINE DRAWING																				
ITEM NO.	HYD-1200HTV	DWG NO.	GSA-HYD-1200HTV-01																	
SCALE	NONE																			

(A4 : 297mm x 210mm)

ZD-MLH002I-CAH-VSD
ON DWG



DEW POINT		2~10°C @ FDP	
INLET AIR PRESSURE		7.0 barg	
INLET AIR TEMPERATURE		45°C	
CAPACITY		180 Nm³/min	
17	PRESS. GAUGE	COOLING WATER	1
16	PRESS. GAUGE	OUTLET AIR	1
15	PRESS. GAUGE	INLET AIR	1
14	PRESS. GAUGE	REF. SUCTION	1
13	AUTO DRAIN	PT. 15A	2
12	HGBV	-	3
11	ACCUMULATOR	-	1
10	HEAT EXCHANGER	400 HP	3
9	EXPANSION VALVE	40 TON	1
8	MOIST. INDICATOR	-	1
7	FILTER DRYER	-	1
6	REF. RECEIVER	-	1
5	C.W. REGULATING V/V	-	1
4	REF. PRESS. TRANSMIT.	-1 ~ 35 BAR	1
3	W.C. CONDENSER	40 HP (CONDENSING CAPACITY)	1
2	OIL SEPARATOR	-	1
1	REF. COMPRESSOR	40HP (COOLING CAPACITY)	1
NO.	PART NAME	DESCRIPTION	QTY

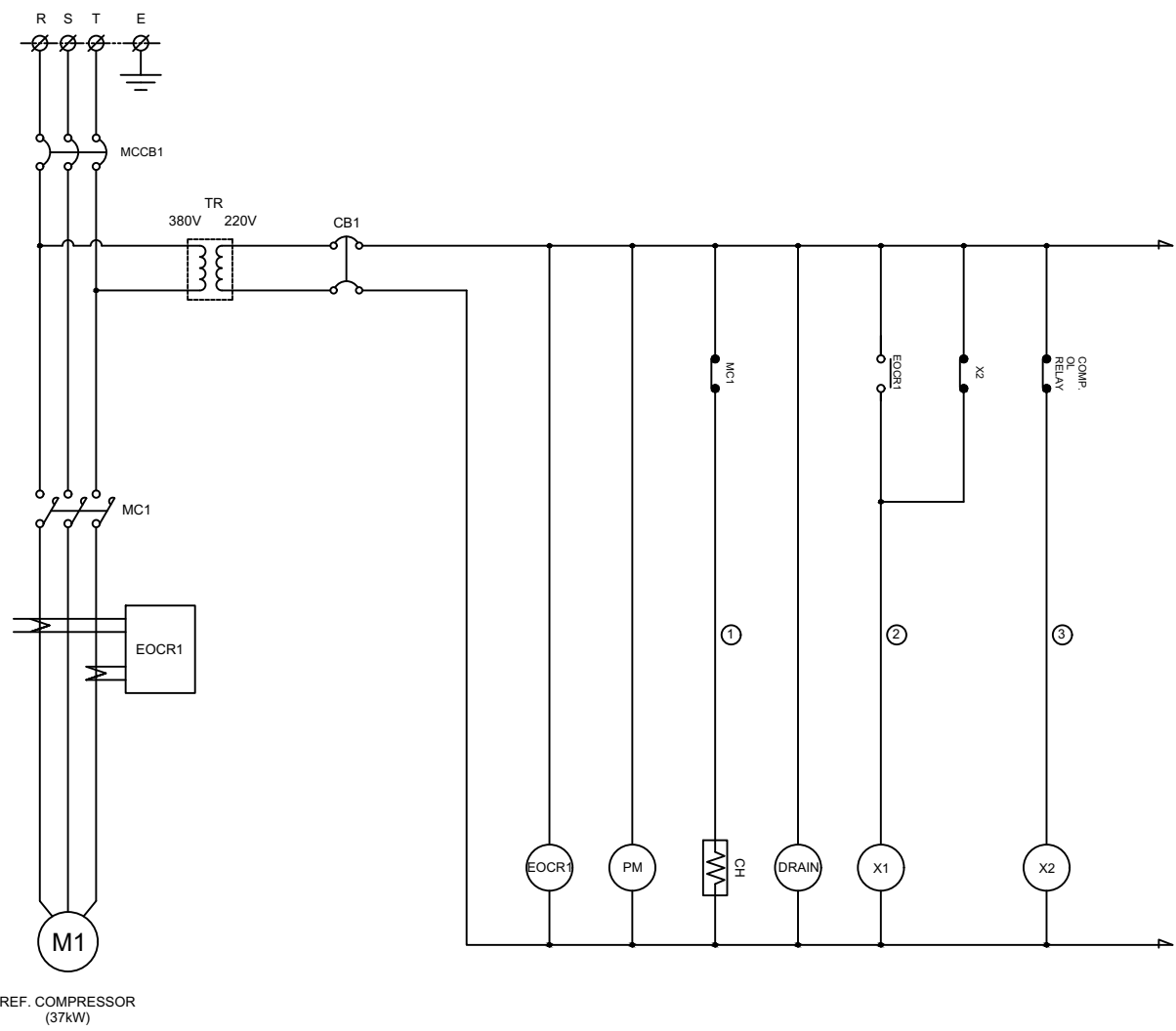
2020. 09. 26	ISSUED FOR REFERENCE				
REV.	DATE	DESCRIPTION	ENG	CHK	APPD
PROJECT					

MANUFACTURER
GSA
 Global Standard Air & Gas

PIPING & INSTRUMENTATION DRAWING

ITEM NO.	HYD-1200HTV	DWG NO.	GSA-HYD-1200HTW-02
SCALE	NONE		

10 T0-MLH00Z1-QH-VSD (CN SWG)



POWER SOURCE AC 380/440V, 3Ph, 50/60Hz		
12	PT1	REF. PRESSURE TRANSMITTER
11	TS1 ~ TS4	TEMP. SENSOR
10	X1, X2	RELAY
9	DR1, DR2	CONDENSATE WATER DRAIN
8	CH	REF. COMP. HEATER
7	PM1, PM2	REF. COMP. PROTECTION MODULE
6	CB1	CIRCUIT BREAKER
5	TR	TRANSFORMER
4	EOCR1, EOCR2	REF. COMP. OVERLOAD RELAY
3	MC1, MC2	REF. COMP. MAGNETIC CONTACTOR
2	MCCB1	MOLDED CASE CIRCUIT BREAKER
1	M1, M2	REF. COMPRESSOR
NO.	SYMBOL	DESCRIPTION

***REVERSE PHASE WARNING**
 Be sure to check the rotation direction of the fan motor and the operating condition of the refrigerant compressor.

- The fan motor must rotate clockwise.
- When the refrigerant compressor is operating, the refrigerant suction pressure will be lowered.

When operating in reverse phase, the refrigerant compressor is damaged.

In case of reverse phase, change the position of 2 wires out of 3 wires of the power supply line.

Problems caused by incorrect power connection are not guaranteed.

△									
△									
△									
△									
△	2020. 09. 28	ISSUED FOR REFERENCE							
REV.	DATE	DESCRIPTION	ENG	CHK	APPO	APPO	APPO	APPO	APPO

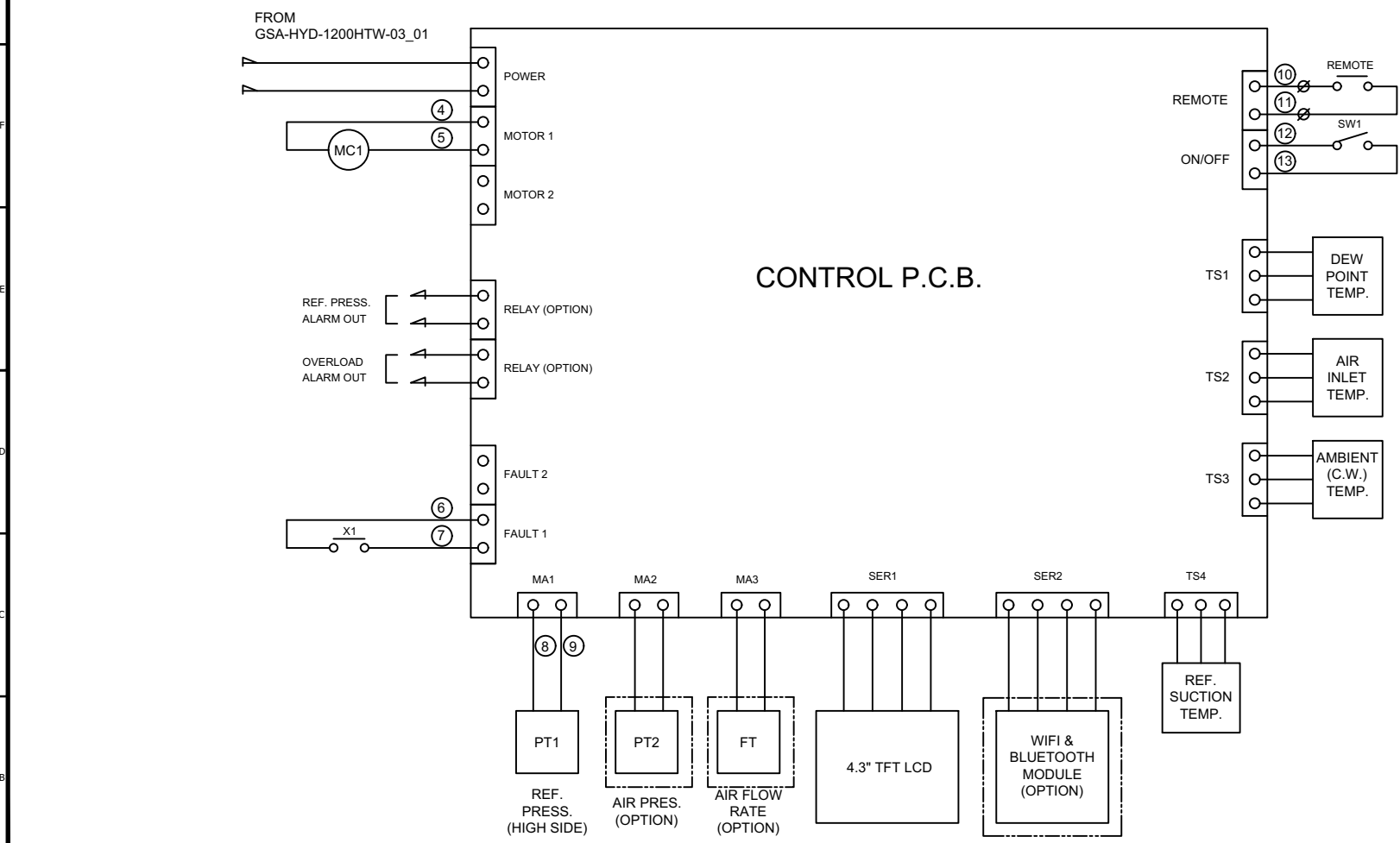
PROJECT: -

MANUFACTURER: **GSA**
 Global Standard Air & Gas

TITLE: **WIRING DRAWING**

ITEM NO.	HYD-1200HTW	DWG NO.	GSA-HYD-1200HTW-03_01	REV.	
SCALE	NONE				

(A4 : 297mm x 210mm)



POWER SOURCE AC 380/440V, 3Ph, 50/60Hz		
12	PT1	REF. PRESSURE TRANSMITTER
11	TS1 ~ TS4	TEMP. SENSOR
10	X1, X2	RELAY
9	DR1, DR2	CONDENSATE WATER DRAIN
8	CH	REF. COMP. HEATER
7	PM1, PM2	REF. COMP. PROTECTION MODULE
6	CB1	CIRCUIT BREAKER
5	TR	TRANSFORMER
4	EOCR1, EOCR2	REF. COMP. OVERLOAD RELAY
3	MC1, MC2	REF. COMP. MAGNETIC CONTACTOR
2	MCCB1	MOLDED CASE CIRCUIT BREAKER
1	M1, M2	REF. COMPRESSOR
NO.	SYMBOL	DESCRIPTION

***REVERSE PHASE WARNING**

Be sure to check the rotation direction of the fan motor and the operating condition of the refrigerant compressor.

- The fan motor must rotate clockwise.
- When the refrigerant compressor is operating, the refrigerant suction pressure will be lowered.

When operating in reverse phase, the refrigerant compressor is damaged.

In case of reverse phase, change the position of 2 wires out of 3 wires of the power supply line.

Problems caused by incorrect power connection are not guaranteed.

REV. NO.	DATE	DESCRIPTION	DWG	CHK	APPD	APPD	APPD
2020.09.28		ISSUED FOR REFERENCE					

PROJECT: -

MANUFACTURER: **GSA**
Global Services of America

TITLE: **WIRING DRAWING**

ITEM NO.	HYD-1200HTW	DWG NO.	GSA-HYD-1200HTW-03_02	REV.	△
SCALE	NONE				