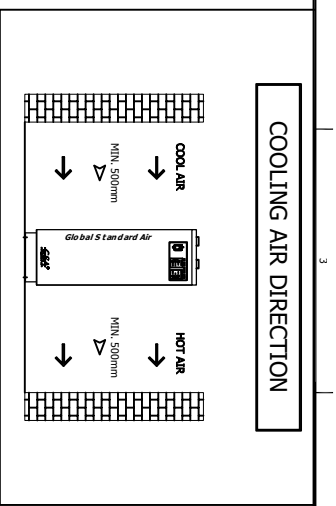
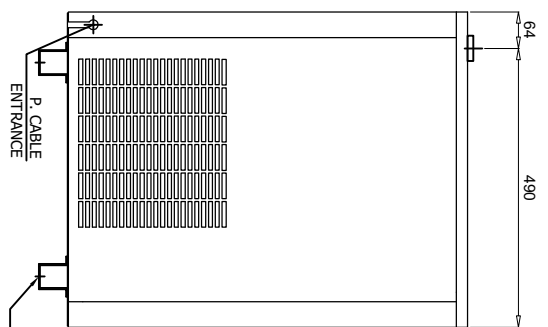
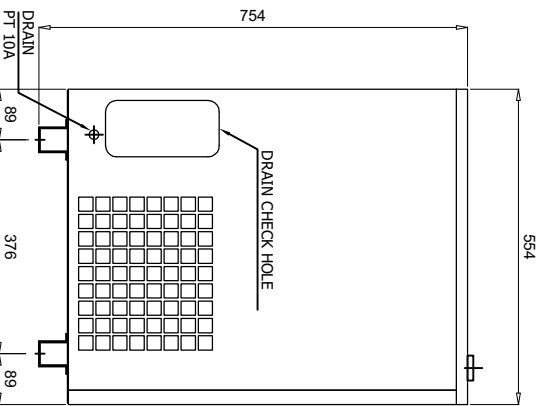
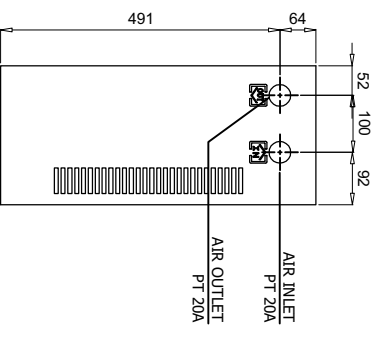
	2nd Generation Refrigerated Air Dryer		Rev.	Date	Prepared By	Checked By	Approved By
			1	2020.09.18	WOO.I.H.	JO.S.J.	KIM.H.W.
	Air Cooled Type		2				
			3				
4							
Project Name			-		Model Name		HYD-10N2
SPECIFICATION							
1							
2	Supply Voltage	220V	Inlet Flow Rate	1	Nm3/min		
3	Phase	1PH	Inlet Pressure	7	barg		
4	Frequency	60Hz	Inlet Temp.	38	°C		
5	Control use	220V	Outlet Flow Rate	1	Nm3/min		
6	Fulid	Compressed Air	Outlet Pressure	6.8	barg		
7	Location	Indoor	Outlet Temp.	28±5	°C		
8	Design Code	Maker STD.	Pressure Drop	0.2	bar		
9	Area Class	Non-Hazardous	Outlet Dew Point	2~10	°C		
10			Design Pressure	14	barg		
11			Design Temperature	70	°C		
12			Ambient Temperature	32	°C		
CONSTRUCTION							
13							
14	Refrigerant	R-134A	Dimension (W x L x H)	244 X 554 X 754	mm		
15	Ref. Compressor Type	Recipro Hemertic	Weight	36	kg		
16	Ref. Compressor Capacity	1/5 HP	Min. Power Consumption	0.16	kW		
17	Condenser Type	Air Cooled	Inlet Connection	20A	PT Female Screw		
18	Condenser Fan Motor	9 W	Outlet Connection	20A	PT Female Screw		
19		1 EA	Drain Connection	10A	PT Female Screw		
20	Condenser Fan Size	230 mm	Color (Munsell)	5.7PB 4.1/9.9			
21	Condenser Capacity	1/3 HP		5.7PB 2.9/3.5			
22	Condenser Material	Aluminum & Copper					
23	Heat Exchanger Type	Block					
24	Heat Exchanger Material	Aluminum					
25	Ref. Control Device	Capillary Tube					
26	ECO Mode Control	Dew Point Temp. Control					
27	Drain Trap Type	Auto Float					
STANDRAD FEATURES AND CONTROL							
28							
29	Fan Controller	YES	Ref. Compressor	YES			
30	Ref. Liquid Filter Dryer	YES	Capillary Tube	YES			
31	Overload Relay	NO	Hot Gas Bypass Valve	NO			
32	PCB Controller	YES	Air Cooled Condenser	YES			
33	Fan Motor Test Button	NO	Accumulator	NO			
34	Air Pressure Gauge	NO	Liquid Ref. Receiver	NO			
35	Ref. Pressure Gauge	NO	Oil Separator	NO			
36	High Pressure Switch	NO	Circuit Breaker	NO			
37	Moisture Indicator	NO	Ref. Compressor Heater	NO			
38	Drain	YES					
NOTES							
39							
40							
41							
42							
43							
44							
45							
46							



SPECIFICATION	
INLET AIR TEMPERATURE	38°C
AMBIENT TEMPERATURE	32°C
INLET AIR PRESSURE	7 barg
CAPACITY	1.0 Nm ³ /min
IN/OUT CONNECTION	PT 20A
DIMENSION(WXDxH, mm)	244 X 554 X 754
WEIGHT	36 kg
MIN. POWER CONSUMPTION	0.16 kW
POWER SUPPLY	220V - 1PH - 50/60Hz

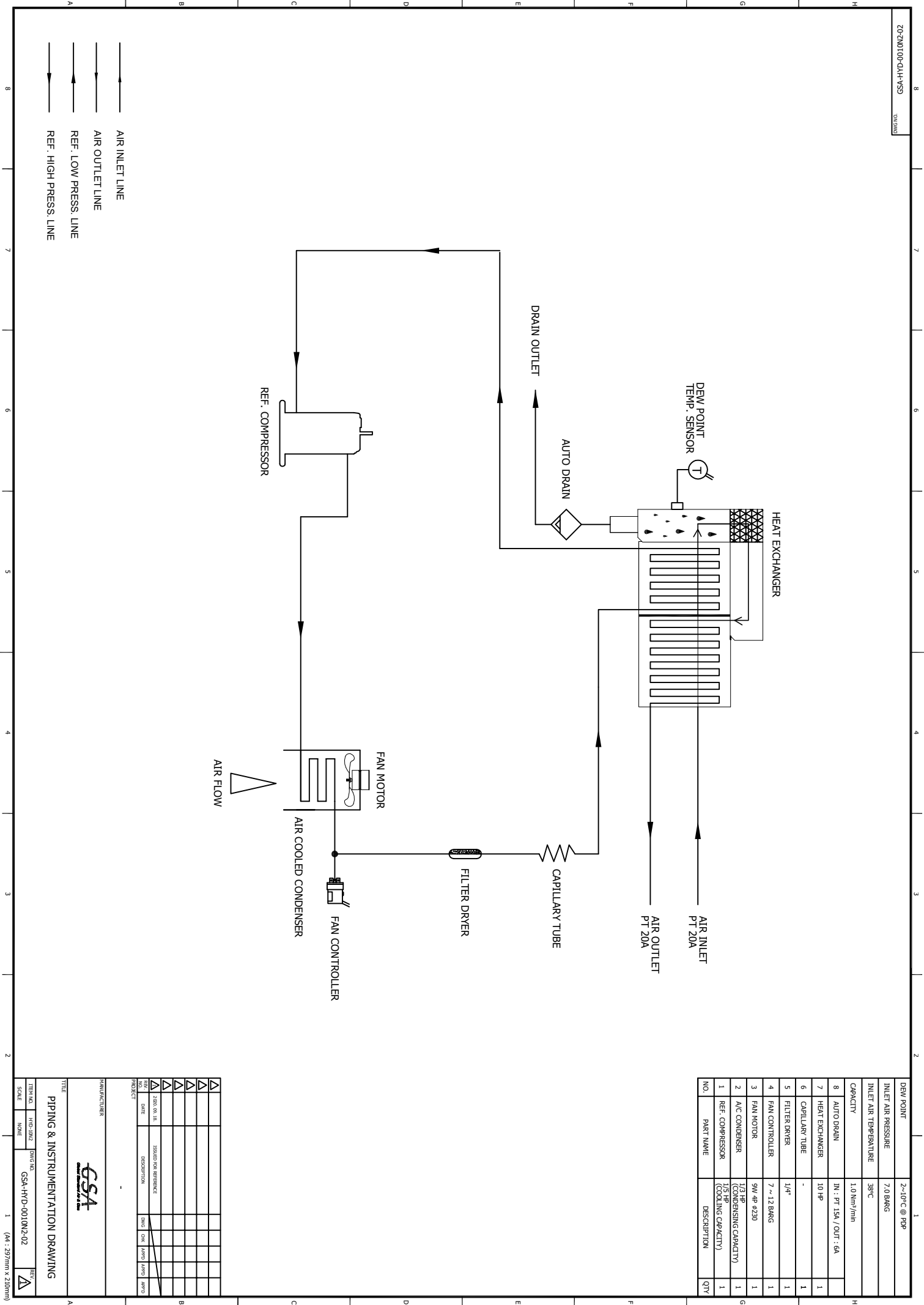


REV.	DATE	DESCRIPTION	CHK.	APP.	DATE	APP.
1	2008.06.18	ISSUED FOR REFERENCE				
2						
3						
4						
5						
6						
7						
8						



OUTLINE DRAWING

ITEM NO.	HWD-DWG	DWG NO.	REV.
SCALE	NONE	GSA-HWD-001DNC-01	

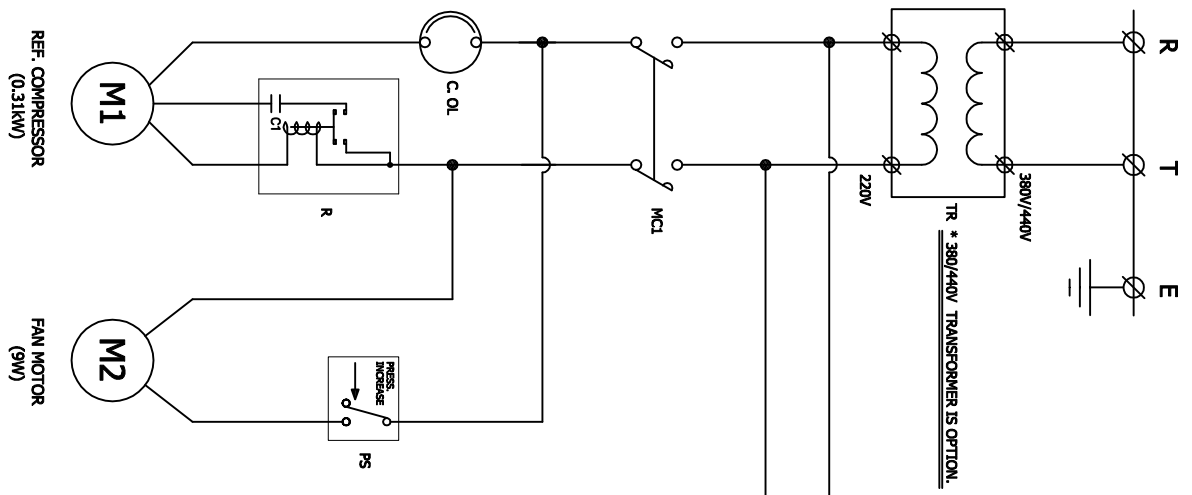


AIR INLET LINE
 AIR OUTLET LINE
 REF. LOW PRESS. LINE
 REF. HIGH PRESS. LINE

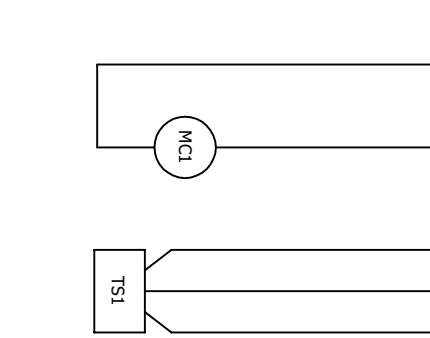
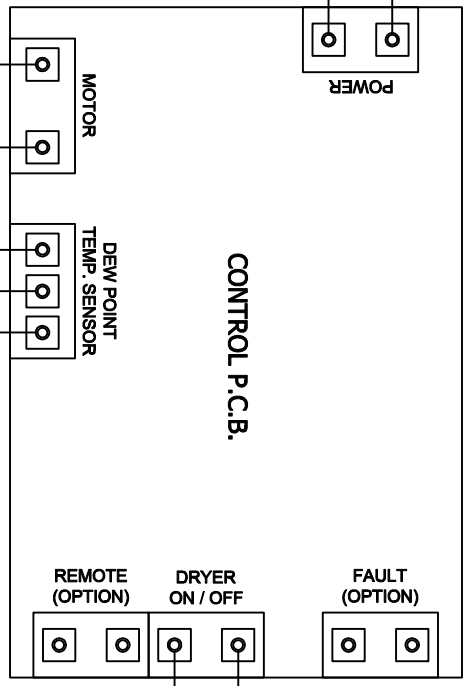
NO.	PART NAME	DESCRIPTION	QTY
1	REF. COMPRESSOR	(1/5 HP COOLING CAPACITY)	1
2	A/C CONDENSER	(7/2 CONDENSING CAPACITY)	1
3	FAN MOTOR	9W 4P #230	1
4	FAN CONTROLLER	7 ~ 12 BAR/G	1
5	FILTER DRYER	1/4"	1
6	CAPILLARY TUBE	-	1
7	HEAT EXCHANGER	10 HP	1
8	AUTO DRAIN	IN : PT 15A / OUT : 6A	1
CAPACITY			1.0 Nm ³ /min
INLET AIR PRESSURE			7.0 BAR/G
DEW POINT			2~10°C @ RDP

REV.	DATE	DESCRIPTION	CHK.	APP.	DATE
1		ISSUED FOR REFERENCE			
2					
3					
4					
5					

TITLE: PIPING & INSTRUMENTATION DRAWING
 MANUFACTURER: GSA
 ITEM NO.: HVD-002
 DWG NO.: GSA-HVD-0010A2-02
 SCALE: NONE
 (44 : 297mm x 210mm)



NO.	SYMBOL	DESCRIPTION
1	M1	REF. COMPRESSOR
2	M2	FAN MOTOR
3	MCI	MAGNETIC CONTACTOR
4	R	RELAY
5	CI	STARTING CAPACTOR
6	C.O.L.	REF. COMPRESSOR OVERLOAD
7	PS	FAN CONTROLLER
8	TS1	DEW POINT TEMP. SENSOR
9	TR	TRANSFORMER
10	SW1	DRYER ON/OFF SWITCH



REV.	NO.	DATE	DESCRIPTION	CHK.	APP.	DATE	APP.
Δ	1		ISSUED FOR REFERENCE				
Δ	2		2008.09.18.				
Δ	3						
Δ	4						
Δ	5						
Δ	6						
Δ	7						
Δ	8						
Δ	9						
Δ	10						

MANUFACTURER: **GSA**
WIRING DRAWING
 TITLE: **WIRING DRAWING**
 TERN. NO.: **GSA-HFD-0010N2-03**
 SCALE: **NONE**
 (44' x 297mm x 210mm)