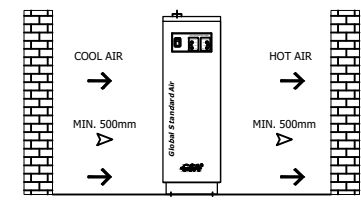
	Refrigerated Air Chiller		Rev.	Date	Prepared By	Checked By	Approved By
			A	2020.09.22	WOO.I.H.	JO.S.J.	KIM.H.W.
	Air Cooled Type		B				
			C				
D							
Project Name		-	Model Name		HYD-10CH		
SPECIFICATION							
1							
2	Supply Voltage	220V	Inlet Flow Rate	1	Nm3/min		
3	Phase	1PH	Inlet Pressure	7	barg		
4	Frequency	60Hz	Inlet Temp.	32	°C		
5	Control use	220V	Inlet Air Condition	Dried Air			
6	Fulid	Compressed Air	Outlet Flow Rate	1	Nm3/min		
7	Location	Indoor	Outlet Pressure	6.8	barg		
8	Design Code	Maker STD.	Outlet Temp.	10	°C		
9	Area Class	Non-Hazardous	Pressure Drop	0.2	bar		
10			Design Pressure	14	barg		
11			Design Temperature	70	°C		
12			Ambient Temperature	32	°C		
CONSTRUCTION							
13							
14	Refrigerant	R-134A	Dimension (W x L x H)	244 X 554 X 754	mm		
15	Ref. Compressor Type	Recipro Hemertic	Weight	32	kg		
16	Ref. Compressor Capacity	1/5 HP	Power Consumption	0.32	kW		
17	Condenser Type	Air Cooled	Inlet Connection	15A	PT Female Screw		
18	Condenser Fan Motor	9 W	Outlet Connection	15A	PT Female Screw		
19		1 EA	Drain Connection(Optional)	10A	PT Female Screw		
20	Condenser Fan Size	230 mm	Color (Munsell)	5.7PB 4.1/9.9			
21	Condenser Capacity	1/3 HP		5.7PB 2.9/3.5			
22	Condenser Material	Aluminum & Copper					
23	Heat Exchanger Type	Block					
24	Heat Exchanger Material	Aluminum					
25	Ref. Control Device	Capillary Tube					
26							
27							
STANDRAD FEATURES AND CONTROL							
28							
29	Ref. Compressor	YES	PCB Controller	YES			
30	Air Cooled Condenser	YES	Air Pressure Gauge	NO			
31	Fan Motor	YES	Ref. Pressur Gauge	NO			
32	Fan Controller	YES	Suction Line Accumulator	NO			
33	Ref. High Pressure Switch	NO	Liquid Ref. Receiver	NO			
34	Filter Dryer	YES					
35	Capillary Tube	YES					
36	Heat Exchanger	YES					
37	Temperature Sensor	YES					
38	Hot Gas Bypass Valve	NO					
NOTES							
39							
40							
41							
42							
43							
44							
45							
46							

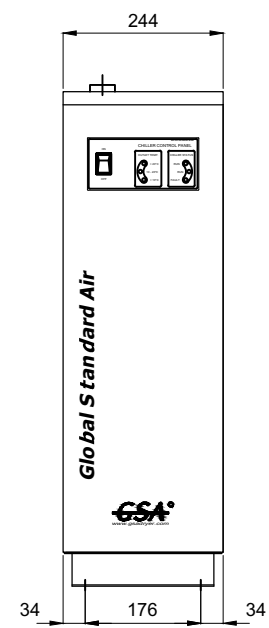
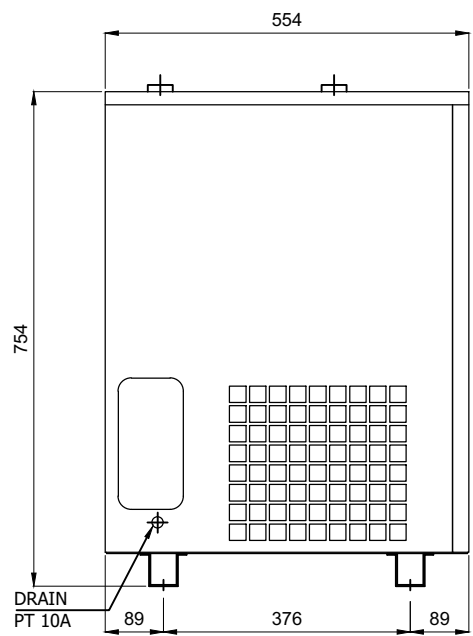
INLET/OUTLET AIR TEMP.	32°C / 10°C
INLET AIR PRESSURE	7 barg
INLET AIR CONDITION	DRIED AIR
CAPACITY	1.0 Nm ³ /min
IN/OUT CONNECTION	PT 15A
DIMENSION(WXDXH, mm)	244 X 554 X 754
WEIGHT	32 kg
POWER CONSUMPTION	0.32 kW
POWER SUPPLY	220V - 1PH - 60Hz

COOLING AIR DIRECTION




AIR OUTLET
PT 15A

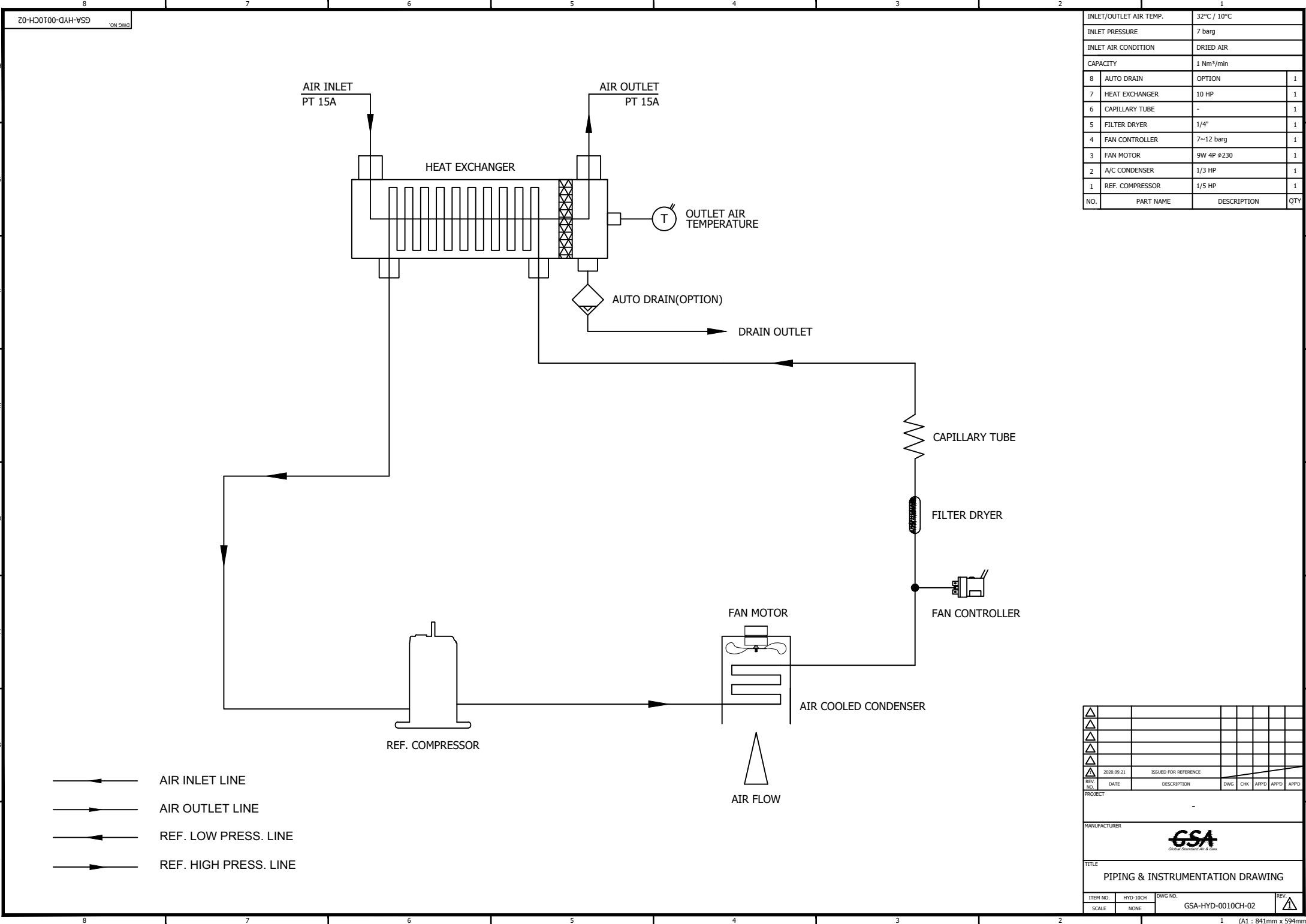
AIR INLET
PT 15A




P. CABLE
ENTRANCE

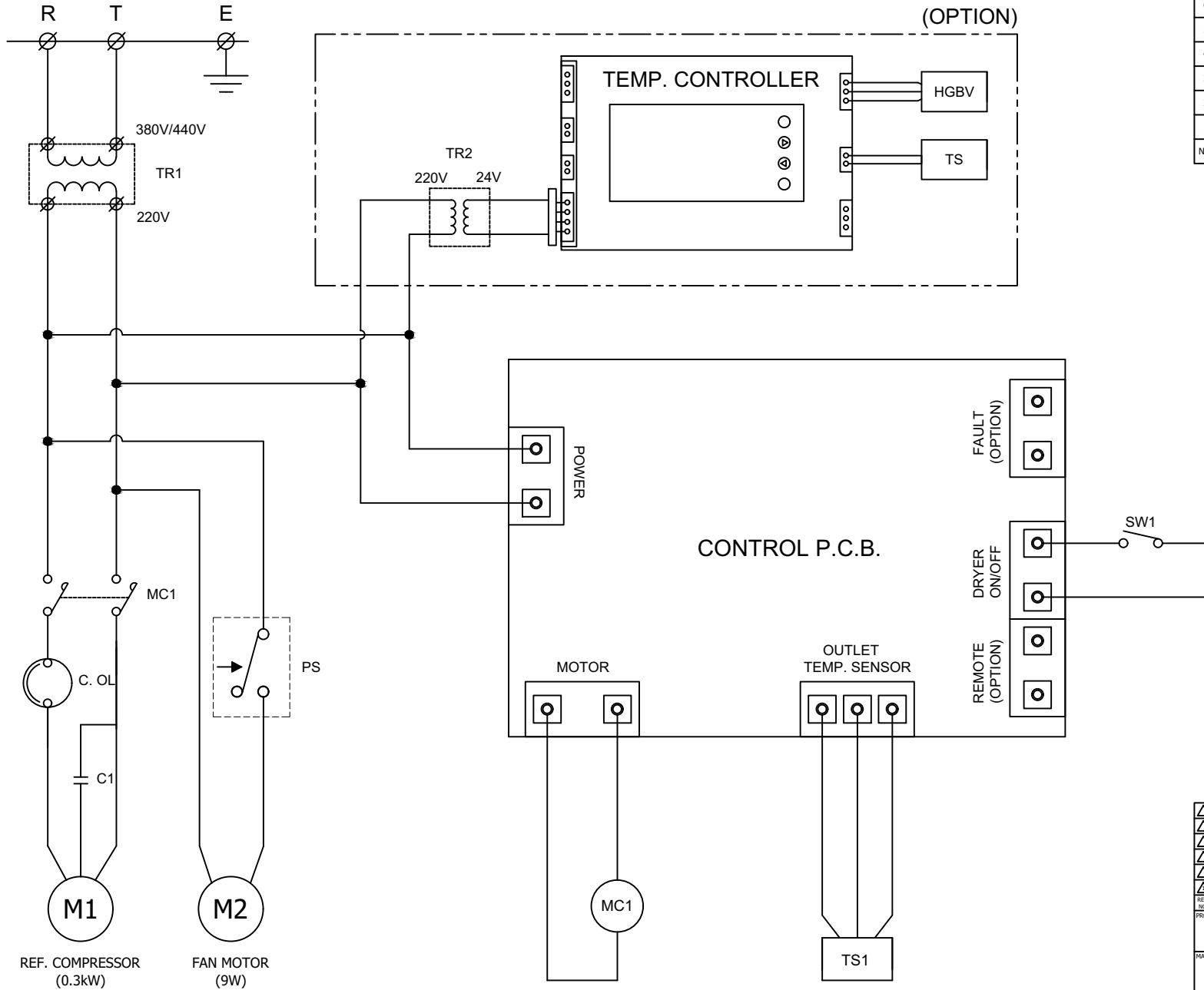
4-Ø12
ANCHOR HOLE

REV. NO.	DATE	DESCRIPTION	ENWG	CHK	APPD	APPD	APPD	
2020.09.21		ISSUED FOR REFERENCE						
PROJECT								
MANUFACTURER								
 Global Standard Air & Co.								
TITLE								
OUTLINE DRAWING								
ITEM NO.	HYD-10CH	DWG NO.	GSA-HYD-0010CH-01				REV.	1
SCALE	NONE							(A1 : 841mm x 594mm)



INLET/OUTLET AIR TEMP.		32°C / 10°C
INLET PRESSURE		7 barg
INLET AIR CONDITION		DRIED AIR
CAPACITY		1 Nm ³ /min
8	AUTO DRAIN	OPTION 1
7	HEAT EXCHANGER	10 HP 1
6	CAPILLARY TUBE	- 1
5	FILTER DRYER	1/4" 1
4	FAN CONTROLLER	7~12 barg 1
3	FAN MOTOR	9W 4P #230 1
2	A/C CONDENSER	1/3 HP 1
1	REF. COMPRESSOR	1/5 HP 1
NO.	PART NAME	DESCRIPTION QTY

△										
△										
△										
△										
△	2020.09.21	ISSUED FOR REFERENCE								
REV. NO.	DATE	DESCRIPTION	ENWG	CHK	APPD	APPD	APPD	APPD		
PROJECT										
MANUFACTURER										
 <small>Global Service Automation & Control</small>										
TITLE										
PIPING & INSTRUMENTATION DRAWING										
ITEM NO.	HYD-10CH	DWG NO.	GSA-HYD-0010CH-02							REV.
SCALE	NONE									△



POWER SOURCE AC 220/380/440V, 1Ph, 50/60Hz		
8	SW1	START/STOP SWITCH
7	TR1	TRANSFORMER(OPTION)
6	TS1	OUTLET TEMP. SENSOR
5	PS	FAN CONTROLLER
4	MC1	MAGNETIC CONTACTOR
3	C1	STARTING CAPACITOR
2	M2	FAN MOTOR
1	M1	REF. COMPRESSOR
NO.	SYMBOL	DESCRIPTION

REV. NO.	DATE	DESCRIPTION	ENG	CHK	APPD	APPD	APPD
△							
△							
△							
△							
△	2020.09.21	ISSUED FOR REFERENCE					

PROJECT: -

MANUFACTURER: **GSA**
Global Standard Air & Gas

TITLE: **WIRING DRAWING**

ITEM NO.	HYD-10CH	DWG NO.	REV.
SCALE	NONE	GSA-HYD-0010CH-03	△