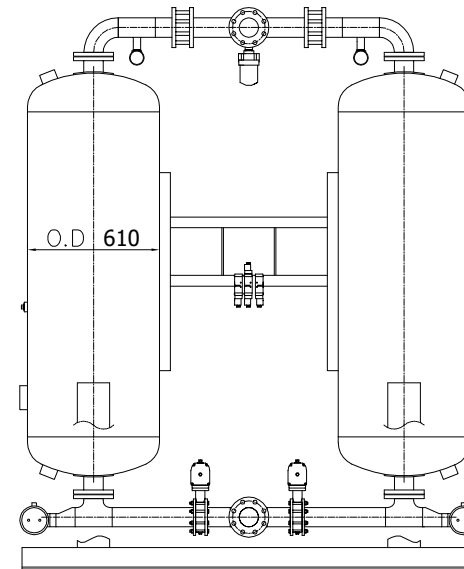
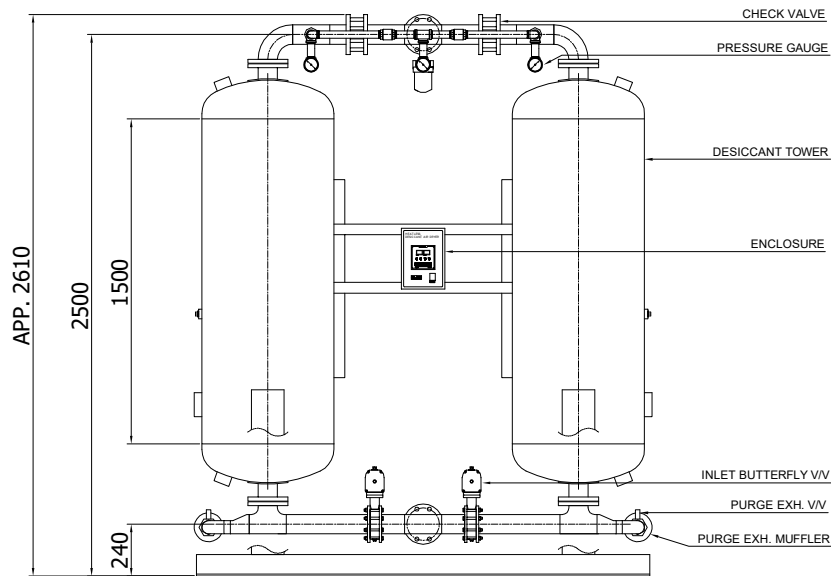
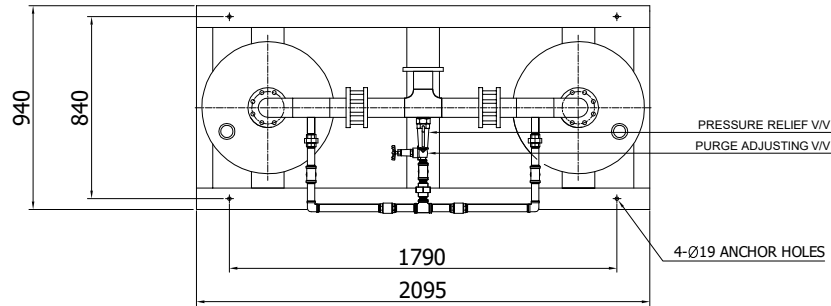
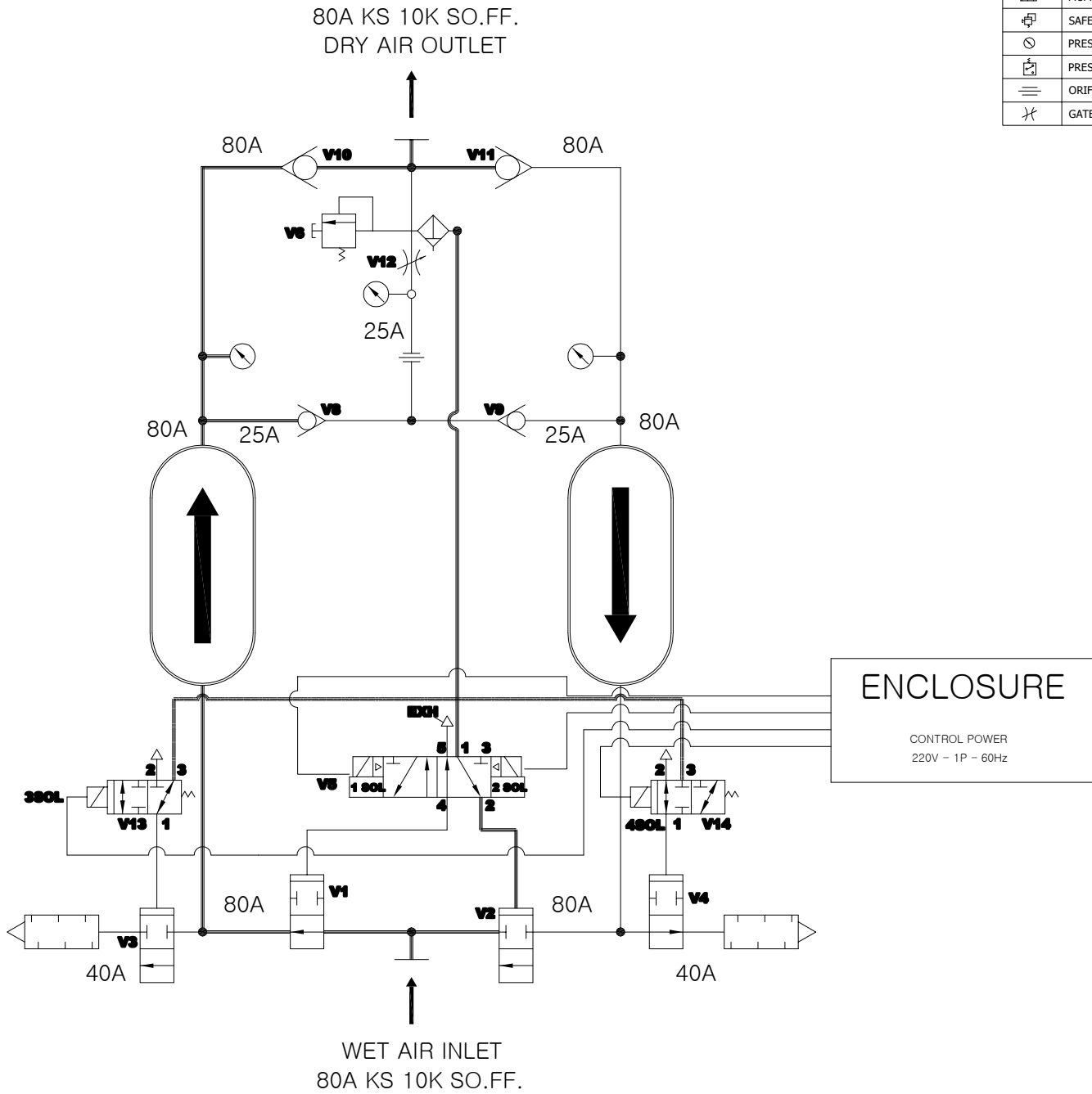
		<b>Desiccant Air Dryer</b> <b>Heatless Type</b>		Rev.	Date	Prepared By	Checked By	Approved By
				1	2019.01.15	LEE.S.M.	JO.S.J.	KIM.H.W.
Project No		-		Model Name		PHL-1400		
<b>MECHANICAL DESIGN DATA</b>								
2	Supply Voltage	220V		Inlet Flow Rate	2,380		Nm <sup>3</sup> /h	
3	Phase	1PH		Inlet Pressure	7.0		barg	
4	Frequency	60Hz		Inlet Temp.	38		°C	
5	Control use	220V		Outlet Flow Rate	2,046		Nm <sup>3</sup> /h	
6	Fulid	Compressed Air		Outlet Pressure	6.8		barg	
7	Location	Indoor		Outlet Temp.	40		°C	
8	Design Code	Maker STD.		Pressure Drop	0.2		bar	
9	Area Class	Non-Hazardous		Outlet Dew Point	-40		°C at ATM	
10	Purge Fulid	Dried Air		Purge Rate	334		Nm <sup>3</sup> /h	
<b>CONSTRUCTION</b>								
12	Dryer Type	Heatless		Design Pressure	9.7		barg	
13	Vessels Design Code	KS B 6750-3		Design Temperature	250		°C	
14	Vessels Corrosion Allowance	1 mm		Ambient Temperature	38		°C	
15	Desiccant	Activated Alumina		Drying Time	5		min	
16	Desiccant Quantity	700 kg/2Tower		Reactivation Time	4		min	
17	Noise	85 dBA		- Heating Time	N/A		min	
18	Inlet Connection	80A	KS 10K SO.FF.	- Cooling Time	N/A		min	
19	Outlet Connection	80A	KS 10K SO.FF.	- Repressing Time	1		min	
20	Material			Heater Type	Location	N/A		
21	- Shell / Head	SS275 / SS275			Method	N/A		
22	- Flange / Pipe	SS275 / SPP		Heater Power	Main	N/A	kW	
23	- Heater(Shell/Head)	N/A			Aux.	N/A	kW	
24	Dimension (W x L x H)	2095 X 940 X 2610 mm		Control Panel Power	50		W	
25	Weight	1,575 kg		Blower Power	N/A		kW	
26	Color (Munsell)	3.0 BG 7.1/0.2		Power Consumption(Avg.)	50		W	
27	Insulation	NO		Control Unit	Printed Circuit Board (P.C.B)			
28				Enclosure Control Panel	IP23			
<b>INSTRUMENTS-ACESSORIES</b>								
30	Pressure Gauge	YES						
31	Pressure Switch	NO						
32	Orifice	YES						
33	Pressure Regulator For Control Air	NO						
34	Instrument Air Filter	YES						
35								
<b>OPTION ITEM</b>								
37	Touch Screen	NO						
38	Valve Limit Switch	NO						
39	Dew Point Meter	NO						
40	Local Control Panel Double Door	NO						
41	Anchor Bolt / Nut	NO						
<b>NOTES</b>								
43								
44								
45								
46								



POWER SOURCE AC 220V, 1Ph, 50/60Hz			
19	OUTLET	FLG. 80A	1
18	INLET	FLG. 80A	1
17	CONTROL BOARD	PCB	1
16	ENCLOSURE	-	1
15	DESICCANT TOWER	-	2
14	PURGE EXH. SOL. V/V	-	2
13	PURGE EXH. V/V	PT 40A	2
12	PURGE EXH. MUFFLER	PT 40A	2
11	INLET BUTTERFLY VALVE	FLG. 80A	2
10	TOWER SELECTING SOL. V/V	4W 2P	1
9	PRESSURE RELIEF VALVE	PT 50A	1
8	POWER ON/OFF SWITCH	250V 6A	1
7	INSTRUMENT AIR FILTER	PT 40A	1
6	PURGE PRESSURE GAUGE	PT 8A	1
5	PURGE ORIFICE UNION	PT 25A	1
4	PURGE ADJUSTMENT VALVE	PT 25A	1
3	TOWER PRESSURE GAUGE	PF 8A	2
2	PURGE CHECK VALVE	PT 25A	2
1	OUTLET CHECK VALVE	FLG. 80A	2
	PART NAME	DESC.	QTY

△										
△										
△										
△										
△	2018.12.10	ISSUED FOR PROPOSAL	-	-	-	-	-	-	-	
REV. NO.	DATE	DESCRIPTION	DWG	CHK	APPD	APPD	APPD	APPD		
PROJECT										
MANUFACTURER										
TITLE										
PHL-1400 OUTLINE										
ITEM NO.	PHL-1400	DWG NO.								REV.
SCALE	NONE	<b>GSA-PHL-1400-01</b>							△	



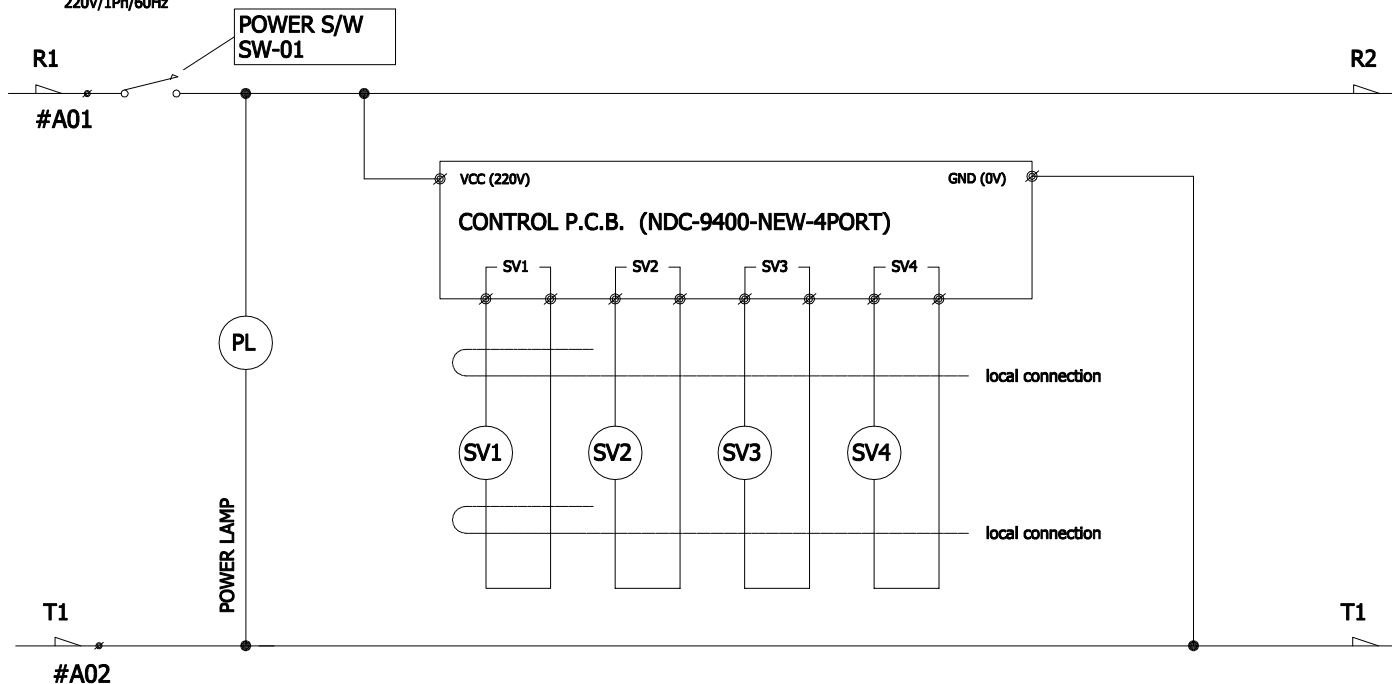
SYMBOL	DESCRIPTION	NO.	NOTE
	CHECK VALVE	1	LINE SYMBOLS FOR FLOW DIRECTION. LEFT TOWER DRYING RIGHT TOWER REGENERATING PILOT AIR LINE ELECTRIC CONNECTION
	MUFFLER	2	SOLENOID VALVES 1SOL AND 4SOL ARE SHOWN ENERGIZED. SOLENOID VALVES 2SOL AND 3SOL ARE SHOWN DE-ENERGIZED.
	SAFETY VALVE	3	"**" INDICATES OPTIONAL PARTS FOR HIGH D.P. ALARM OR DEMAND CYCLE.
	PRESSURE GAUGE		
	PRESSURE SWITCH		
	ORIFICE		
	GATE VALVE		

* 18	D.P. SENSOR ISOLATION VALVE(V14)
* 17	DEW POINT SENSOR ASSEMBLY
* 16	D.P. SENSOR PREFILTER
* 15	D.P. SENSOR ISOLATION VALVE(V13)
* 14	PURGE EXH. PILOT SOLENOID VALVE
13	DESICCANT TOWERS
12	AIR FILTER FOR VALVE CONTROL
11	PURGE FLOW ADJUSTMENT VALVE(V12)
10	PURGE FLOW ORIFICE
9	PURGE PRESSURE GAUGE
8	TOWER PRESSURE GAUGES
7	OUTLET CHECK VALVE(V10/V11)
6	PURGE CHECK VALVE(V8/V9)
5	TOWER SAFETY RELIEF VALVE(V6/V7)
4	TOWER SELECTING SOL. VALVE(V5)
3	PURGE EXHAUST MUFFLER
2	PURGE EXHAUST VALVE(V3/V4)
1	INLET VALVE(V1/V2)
NO.	DESCRIPTION


**ENCLOSURE**  
CONTROL POWER  
220V - 1P - 60Hz

△										
△										
△										
△										
△										
△										
△										
△										
△	2018.12.10	ISSUED FOR PROPOSAL	-	-	-	-	-	-	-	
REV. NO.	DATE	DESCRIPTION	DWG	CHK	APPD	APPD	APPD	APPD	APPD	
PROJECT										
MANUFACTURER										
TITLE										
PHL-1400 SYSTEM										
ITEM NO.	PHL-1400	DWG NO.								REV.
SCALE	NONE	<b>GSA-PHL-1400-02</b>								
(A1 : 841mm x 594mm)										

MAIN CIRCUIT  
CONTROL SOURCE CONNECTIONS  
220V/1Ph/60Hz



SV1	B-TOWER INLET
SV2	B-TOWER PURGE
SV3	A-TOWER INLET
SV4	A-TOWER PURGE

△										
△										
△										
△										
△										
REV. NO.	DATE	DESCRIPTION	DWG.	CHK.	APP'D.	APP'D.	APP'D.	APP'D.	APP'D.	
PROJECT	-									
MANUFACTURER										
TITLE	PHL-1400 WIRING									
ITEM NO.	PHL-1400	DWG NO.								REV.
SCALE	NONE	GSA-PHL-1400-03							△	