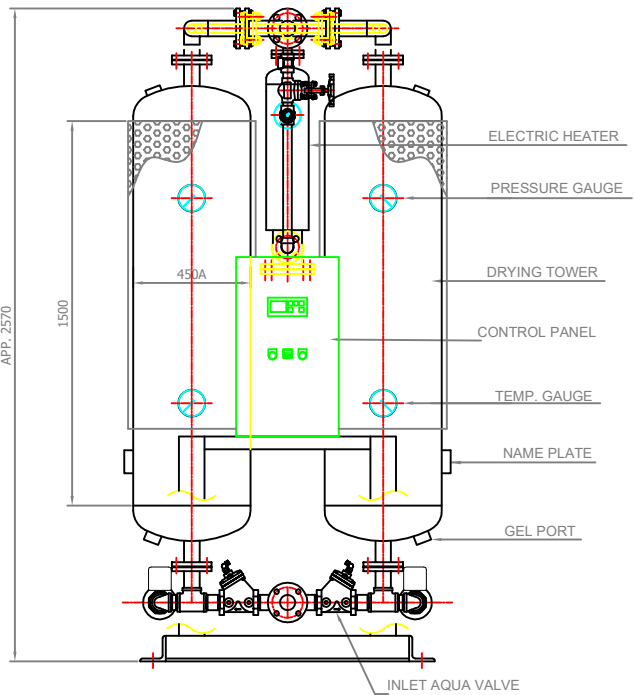
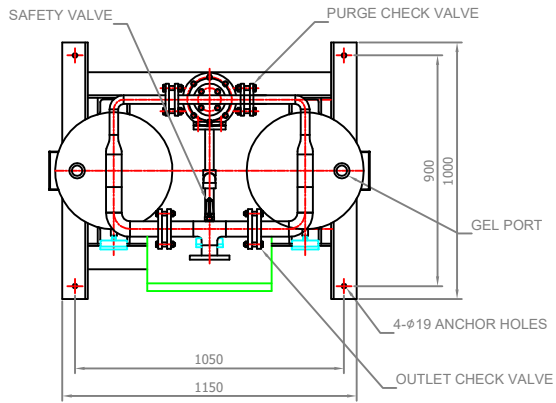
		Desiccant Air Dryer Heater Purge Type		Rev.	Date	Prepared By	Checked By	Approved By
				1	2019.01.15	LEE.S.M.	JO.S.J.	KIM.H.W.
Project No		-		Model Name		PEH-430		
MECHANICAL DESIGN DATA								
2	Supply Voltage	380V		Inlet Flow Rate	870		Nm ³ /h	
3	Phase	3PH		Inlet Pressure	7.0		barg	
4	Frequency	60Hz		Inlet Temp.	38		°C	
5	Control use	220V		Outlet Flow Rate	800		Nm ³ /h	
6	Fulid	Compressed Air		Outlet Pressure	6.8		barg	
7	Location	Indoor		Outlet Temp.	40		°C	
8	Design Code	Maker STD.		Pressure Drop	0.2		bar	
9	Area Class	Non-Hazardous		Outlet Dew Point	-40		°C at ATM	
10	Purge Fulid	Dried Air		Purge Rate	70		Nm ³ /h	
CONSTRUCTION								
12	Dryer Type	Heater		Design Pressure	9.7		barg	
13	Vessels Design Code	KS B 6750-3		Design Temperature	250		°C	
14	Vessels Corrosion Allowance	1 mm		Ambient Temperature	38		°C	
15	Desiccant	Activated Alumina		Drying Time	240		min	
16	Desiccant Quantity	390 kg/2Tower		Reactivation Time	240		min	
17	Noise	85 dBA		- Heating Time	150		min	
18	Inlet Connection	50A	KS 10K SO.FF.	- Cooling Time	87		min	
19	Outlet Connection	50A	KS 10K SO.FF.	- Repressing Time	3		min	
20	Material			Heater Type	Location	External		
21	- Shell / Head	SPP / SS275			Method	Electric.		
22	- Flange / Pipe	SS275 / SPP		Heater Power	Main	8.4	kW	
23	- Heater(Shell/Head)	SPP / SS275			Aux.	-	kW	
24	Dimension (W x L x H)	1150 X 1000 X 2550 mm		Control Panel Power	50		W	
25	Weight	1,000 kg		Blower Power	N/A		kW	
26	Color (Munsell)	3.0 BG 7.1/0.2		Power Consumption(Avg.)	5.3		kW	
27	Insulation	NO		Control Unit	Printed Circuit Board (P.C.B)			
28				Enclosure Control Panel	IP23			
INSTRUMENTS-ACESSORIES								
30	Pressure Gauge	YES		Temperature Controller	YES			
31	Temperature Gauge	YES		Pressure Switch	YES			
32	Thermocouple	YES						
33	Pressure Regulator For Control Air	YES						
34	Instrument Air Filter	YES						
35	Orifice	YES						
OPTION ITEM								
37	Touch Screen	NO		Anchor Bolt / Nut	NO			
38	Valve Limit Switch	NO						
39	Dew Point Meter	NO						
40	Local Control Panel Double Door	NO						
41	Thyristor Power Regulator (S.C.R)	NO						
NOTES								
43								
44								
45								
46								

IO-0430-01 HED-VCS GSA
ION DWG



KS10K SO.FF.
50A FLANGE

OUTLET

PURGE ADJUST VALVE

KS10K SO.FF.
50A FLANGE

INLET

2470

230

PURGE VALVE

SILENCER


NO	DISCRPTION	MATL	QTY	SPECIFICATION
1	ELECTRIC HEATER	-	1	8.4 KW
2	INLET AQUA VALVE	GCD	2	PT 2"
3	OUTLET CHECK VALVE	BRASS	2	FLANGE 2"
4	PURGE CHECK VALVE	304	2	FLANGE 1"
5	PURGE VALVE	C.I	2	PT 1 1/4"
6	SILENCER	-	2	PT 1 1/2"
7	PRESSURE GAUGE	C.S	3	15bar - d.00
8	TEMPERATURE GAUGE	C.S	2	250°C - 100
9	GEL PORT	-	2	PT 1 1/2"
10	GEL PORT	-	2	PT 1 1/2"
11	SAFETY VALVE	BRASS	1	PT 1"
12	NAME PLATE	AL	2	-
13	DRYING TOWER	SP/SS400	2	-
14	PURGE ADJUST VALVE	A105	1	PT 1"
15	A - TOWER INLET VALVE	-	1	-
16	B - TOWER INLET VALVE	-	1	-
17	A - TOWER PURGE VALVE	-	1	-
18	B - TOWER PURGE VALVE	-	1	-
19	CONTROL PANEL	-	1	-

SPECIFICATION			
1	PROCESS	COMPRESSED AIR	
2	CAPACITY	870	Nm ³ /hr
3	INLET AIR PRESSURE	7	barg
4	INLET AIR TEMPERATURE	38	°C
5	DESIGN PRESSURE	9.7	barg
6	DEW POINT	-40	°C
7	NORMAL PURGE	70	Nm ³ /hr
8	POWER SUPPLY	380V-3PH-60HZ	
9	CONTROL POWER	220V-1PH-60HZ	
10	CYCLE TIME	4 + 4 HOURS	
11	DESICCANT	390	kg/2TOWER
12	HEATER	8.4	KW
13	COLOR	3.OBG 7.1/0.2	
14	WEIGHT	1000	kg

REVISION			
REV.	DESCRIPTION	DATE	DWG. BY

REV.	DATE	DESCRIPTION	DWG.	CHK.	APP'D.	APP'D.	APP'D.
2018.12.10	ISSUED FOR PROPOSAL						
PROJECT							


MANUFACTURER



GSA
Global Standard Air & Gas

TITLE

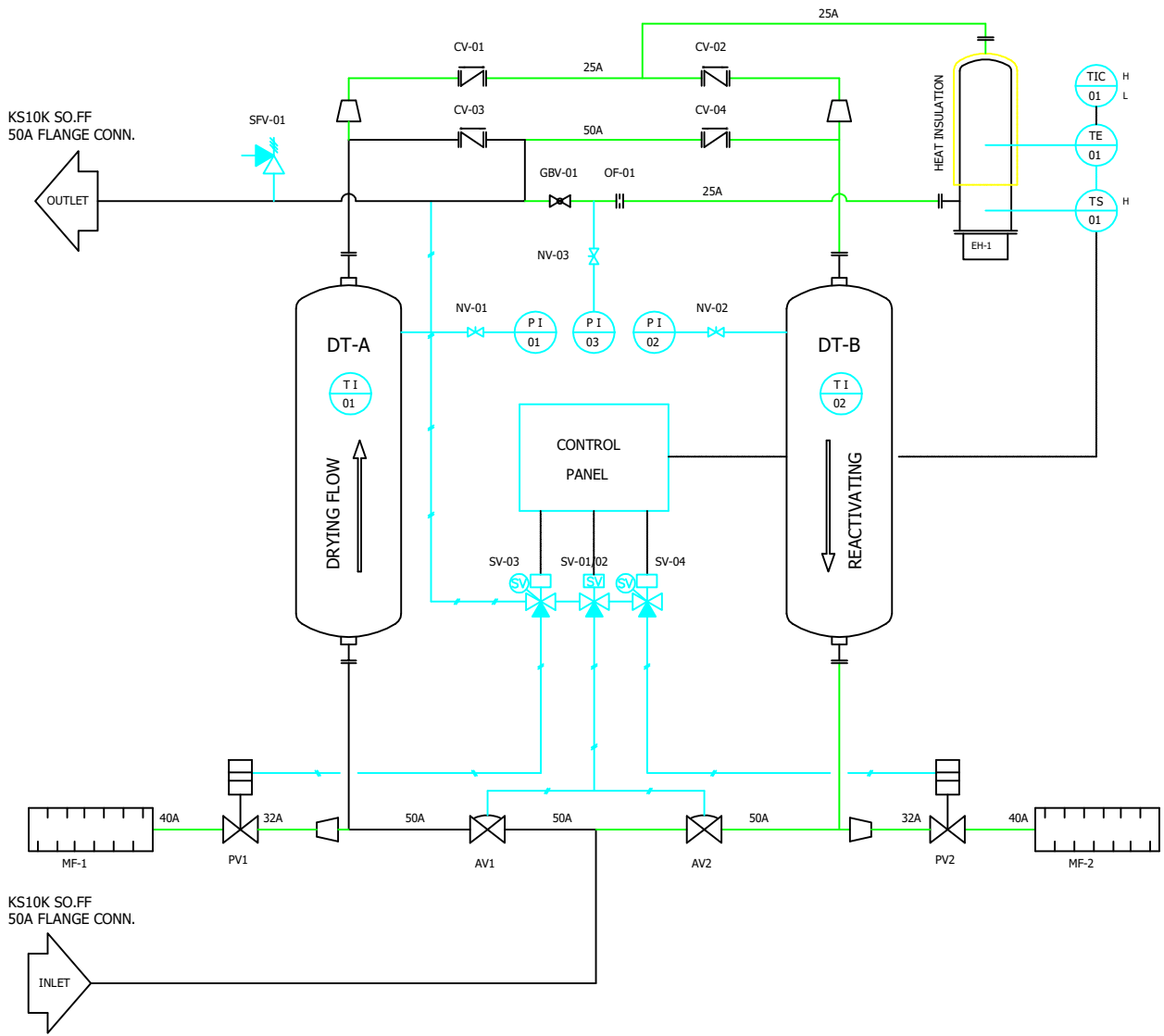
PEH-430 OUTLINE

ITEM NO.	PEH-430	DWG. NO.	GSA-PEH-0430-01	REV.	
SCALE	NONE				

(A1 : 841mm x 594mm)

SYMBOL	DESCRIPTION	SYMBOL	DESCRIPTION	SYMBOL	DESCRIPTION	SYMBOL	DESCRIPTION	SYMBOL	DESCRIPTION
	BALL VALVE (NOR.OPEN)		SAFETY VALVE		AIR MAIN LINE		DRYER TOWER		NEEDLE VALVE
	BALL VALVE (NOR.CLOSE)		SAFETY VALVE		INSTRUMENT AIR LINE		ORIFICE		CHECK VALVE
	GLOBE VALVE		SOLENOID VALVE(SINGLE)		ELECTRIC LINE		THERMOSTAT		GLOBE VALVE
	GLOBE VALVE		SOLENOID VALVE(DOUBLE)		TEMPERATURE GAUGE		SOLENOID VALVE		SAFETY VALVE
	NEEDLE VALVE		AQUAMATIC VALVE		PRESSURE GAUGE		PURGE VALVE		
	CHECK VALVE		AUTO DRAIN TRAP		ELECTRIC HEATER		AIR UNIT		
	GATE VALVE		LUB. OIL LINE		AQUAMATIC VALVE		SILENCER		

DESIGN DATA	
NO	DESCRIPTIONS
01	MODEL NO. PEH-430
02	APPLICATION FLUID COMPRESSED AIR
03	FLOW RATE 870 Nm ³ /hr
04	OUTLET DEW POINT -40 °C @ ATM
05	INLET AIR PRESSURE 7.0 barg
06	INLET AIR TEMP. 38 °C
07	DRY/REGEN. CYCLE 4 HOURS + 4 HOURS
08	DESIGN PRESSURE 9.7 barg
09	DESIGN TEMP. 250 °C
10	HYDRAULIC TEST PR. 15 barg
11	INLET NOZZLE 50A KS 10K SO. FF.
12	OUTLET NOZZLE 50A KS 10K SO. FF.
13	ELECTRICITY 380V/3Ph/60Hz
14	VESSELS DUAL/VERTICALLY ELEVATED.
15	DESICCANT ACTIVATED ALUMINA
16	ACTIVATED ALUMINA 390 kg/2Tower
17	HEATER CAPACITY 8.4 kW



△											
△											
△											
△											
△	2018.12.10	ISSUED FOR PROPOSAL									
REV.	DATE	DESCRIPTION	ENGR	CHK	APPD	APPD	APPD	APPD			
PROJECT											
MANUFACTURER											
TITLE											
PEH-430 SYSTEM											
ITEM NO.	PEH-430	DWG NO.	GSA-PEH-0430-02							REV.	△
SCALE	NONE										

380V/3ø/60HZ

R S T

MCCB-01

F1

F2

MCCB-03

R1

PB-01

R2

TR-01
380/220 100[VA]

X3

12

PBL

PUSH BUTTON LAMP

TO : ELECTRICAL WIRING_2

T1

MH-01
MAGNETIC
CONTACTOR

U1 V1 W1

8.4 KW

MAIN HEATER

THR-01

#A01

#A02

R2

07

TO : ELECTRICAL WIRING_3

TE-01

CA[K]


#A03

#A04

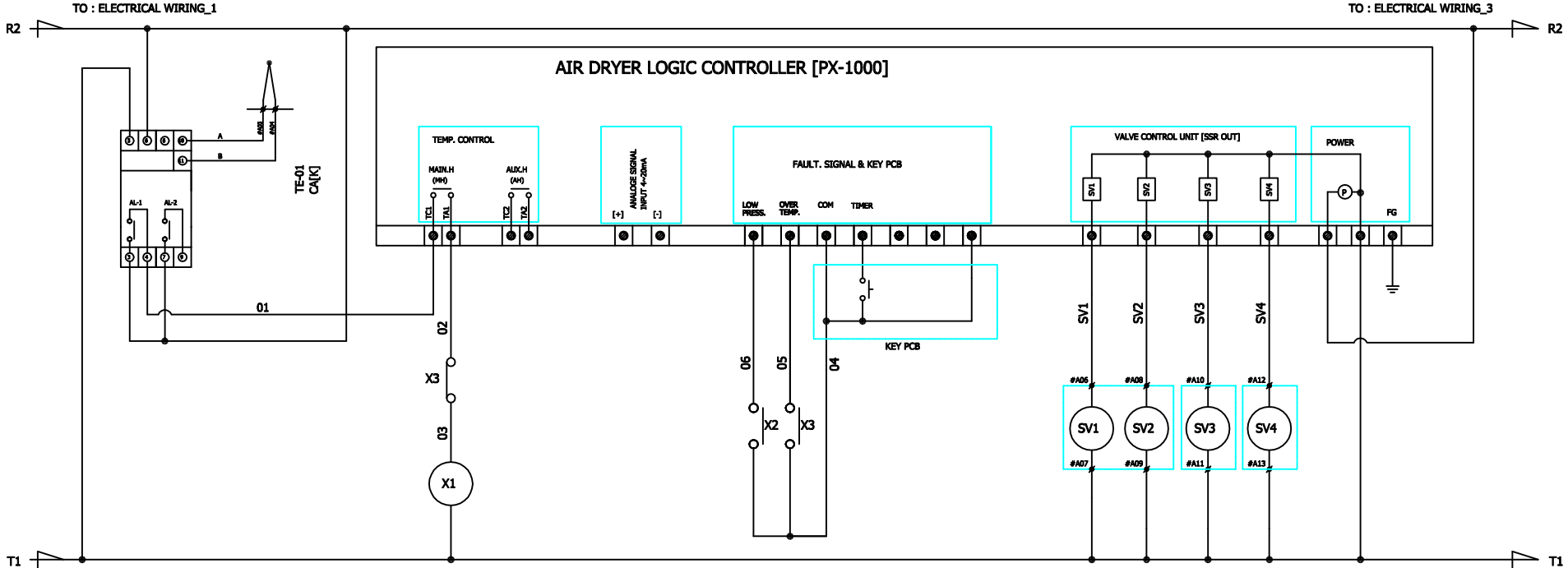
CA[K]+


CA[K]-

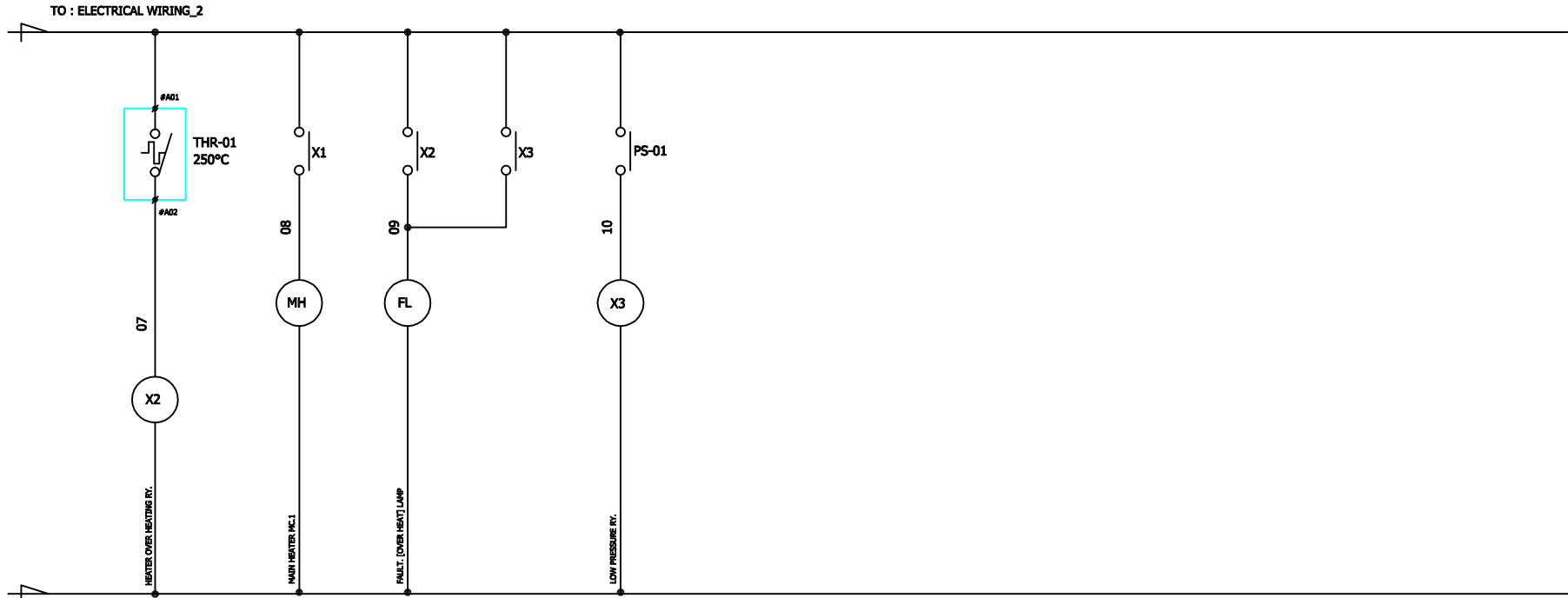
TO : ELECTRICAL WIRING_2

△									
△									
△									
△									
△	2018.12.10	ISSUED FOR PROPOSAL	-	-	-	-	-	-	-
REV.	DATE	DESCRIPTION	DWG	CHK	APPD	APPD	APPD	APPD	APPD
PROJECT									
MANUFACTURER									
 Global Standard Air & Gas									
TITLE									
PEH-430 WIRING									
ITEM NO.	PEH-430	DWG NO.							
SCALE	NONE	GSA-PEH-0430-03							
									REV. △

AIR DRYER LOGIC CONTROLLER [PX-1000]



△								
△								
△								
△								
△								
△	2018.12.10	ISSUED FOR PROPOSAL	-	-	-	-	-	
REV. NO.	DATE	DESCRIPTION	DRWG	CHK	APP'D	APP'D	APP'D	
PROJECT								
MANUFACTURER								
								
TITLE								
PEH-430 WIRING								
ITEM NO.	PEH-430	DRWG NO.						REV.
SCALE	NONE	GSA-PEH-0430-04					△	



△										
△										
△										
△										
△										
△	2018.12.10	ISSUED FOR PROPOSAL	-	-	-	-	-	-	-	
REV.	DATE	DESCRIPTION	CHG	CHK	APP'D	APP'D	APP'D	APP'D	APP'D	
PROJECT										
MANUFACTURER										
TITLE										
PEH-430 WIRING										
ITEM NO.	PEH-430	DWG NO.		GSA-PEH-0430-05						REV.
SCALE	NONE									△