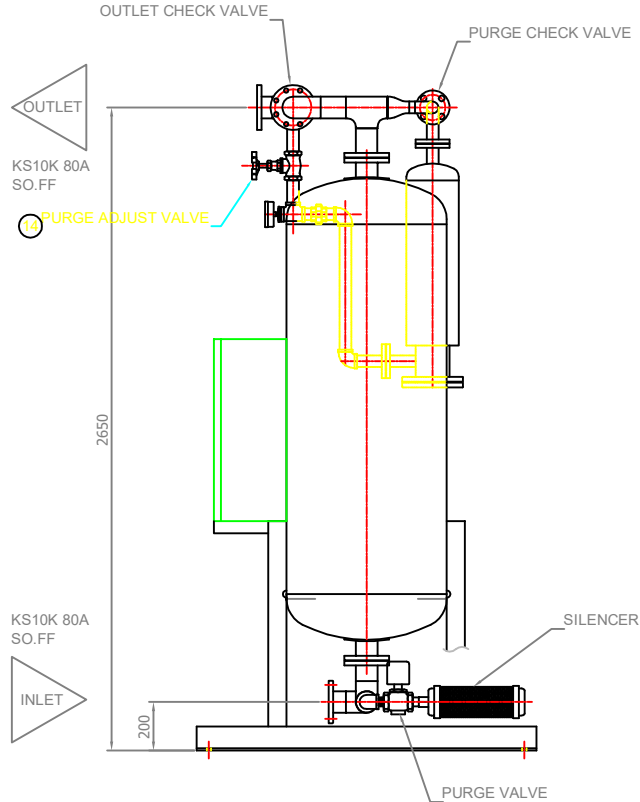
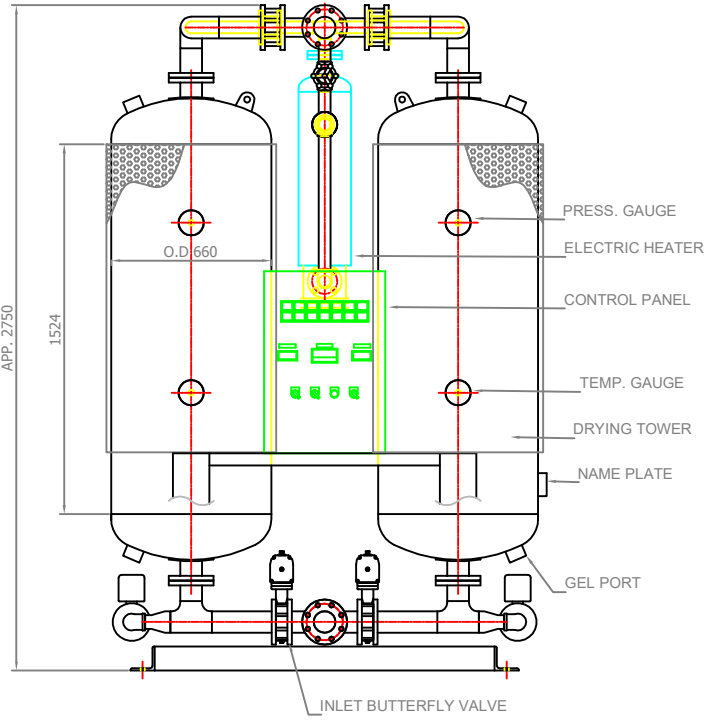
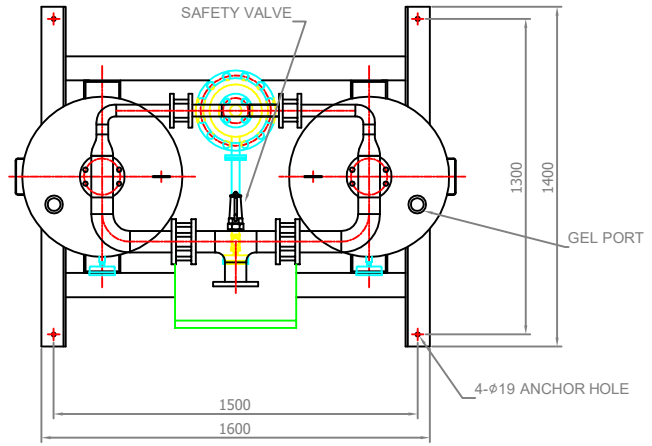
		Desiccant Air Dryer Heater Purge Type		Rev.	Date	Prepared By	Checked By	Approved By
				1	2019.01.15	LEE.S.M.	JO.S.J.	KIM.H.W.
Project No		-		Model Name		PEH-1100		
MECHANICAL DESIGN DATA								
2	Supply Voltage	380V		Inlet Flow Rate	1,950		Nm ³ /h	
3	Phase	3PH		Inlet Pressure	7.0		barg	
4	Frequency	60Hz		Inlet Temp.	38		°C	
5	Control use	220V		Outlet Flow Rate	1,794		Nm ³ /h	
6	Fulid	Compressed Air		Outlet Pressure	6.8		barg	
7	Location	Indoor		Outlet Temp.	40		°C	
8	Design Code	Maker STD.		Pressure Drop	0.2		bar	
9	Area Class	Non-Hazardous		Outlet Dew Point	-40		°C at ATM	
10	Purge Fulid	Dried Air		Purge Rate	156		Nm ³ /h	
CONSTRUCTION								
12	Dryer Type	Heater		Design Pressure	9.7		barg	
13	Vessels Design Code	KS B 6750-3		Design Temperature	250		°C	
14	Vessels Corrosion Allowance	1 mm		Ambient Temperature	38		°C	
15	Desiccant	Activated Alumina		Drying Time	240		min	
16	Desiccant Quantity	860 kg/2Tower		Reactivation Time	240		min	
17	Noise	85 dBA		- Heating Time	150		min	
18	Inlet Connection	80A	KS 10K SO.FF.	- Cooling Time	87		min	
19	Outlet Connection	80A	KS 10K SO.FF.	- Repressing Time	3		min	
20	Material			Heater Type	Location	External		
21	- Shell / Head	SS275 / SS275			Method	Electric.		
22	- Flange / Pipe	SS275 / SPP		Heater Power	Main	10	kW	
23	- Heater(Shell/Head)	SPP / SS275			Aux.	5	kW	
24	Dimension (W x L x H)	1600 X 1400 X 2750 mm		Control Panel Power	0.2		kW	
25	Weight	2,200 kg		Blower Power	N/A		kW	
26	Color (Munsell)	3.0 BG 7.1/0.2		Power Consumption(Avg.)	9.6		kW	
27	Insulation	NO		Control Unit	Programmable Logic Controller (P.L.C)			
28				Enclosure Control Panel	IP23			
INSTRUMENTS-ACESSORIES								
30	Pressure Gauge	YES		Temperature Controller	YES			
31	Temperature Gauge	YES		Pressure Switch	YES			
32	Thermocouple	YES						
33	Pressure Regulator For Control Air	YES						
34	Instrument Air Filter	YES						
35	Orifice	YES						
OPTION ITEM								
37	Touch Screen	NO		Anchor Bolt / Nut	NO			
38	Valve Limit Switch	NO						
39	Dew Point Meter	NO						
40	Local Control Panel Double Door	NO						
41	Thyristor Power Regulator (S.C.R)	NO						
NOTES								
43								
44								
45								
46								



NO	DESCRIPTION	MATL	QTY	SPECIFICATION
1	ELECTRIC HEATER	-	1	15 KW
2	INLET BUTTERFLY VALVE	FCD	2	FLANGE 3"
3	OUTLET CHECK VALVE	BRASS	2	FLANGE 3"
4	PURGE CHECK VALVE	304	2	FLANGE 1 1/2"
5	PURGE VALVE	C.I	2	PT 1 1/2"
6	SILENCER	-	2	PT 1 1/2"
7	PRESSURE GAUGE	C.S	3	15bar -100
8	TEMPERATURE GAUGE	C.S	2	250°C-100
9	GEL PORT	-	2	PT 2"
10	GEL PORT	-	2	PT 2"
11	SAFETY VALVE	BRASS	1	PT 2"
12	NAME PLATE	AL	2	-
13	DRYING TOWER	SS400	2	-
14	PURGE ADJUST VALVE	A105	1	PT 1"
15	A - TOWER INLET VALVE	-	1	-
16	B - TOWER INLET VALVE	-	1	-
17	A - TOWER PURGE VALVE	-	1	-
18	B - TOWER PURGE VALVE	-	1	-
19	CONTROL PANEL	-	1	-

SPECIFICATION			
1	PROCESS	COMPRESSED AIR	
2	CAPACITY	1950	Nm ³ /hr
3	INLET AIR PRESSURE	7	barg
4	INLET AIR TEMPERATURE	38	°C
5	DESIGN PRESSURE	9.7	barg
6	DEW POINT	-40	°C
7	NORMAL PURGE	156	Nm ³ /hr
8	POWER SUPPLY	380V-3PH-60HZ	
9	CONTROL POWER	220V-1PH-60HZ	
10	CYCLE TIME	4 + 4 HOURS	
11	DESICCANT	860	kg/2TOWERS
12	HEATER	15	KW
13	COLOR	3.0BG 7.1/0.2	
14	WEIGHT	2200	kg

REV.	DESCRIPTION	DATE	DWG. BY

REV.	DATE	DESCRIPTION	DWG.	CHK.	APPD.	APPD.	APPD.

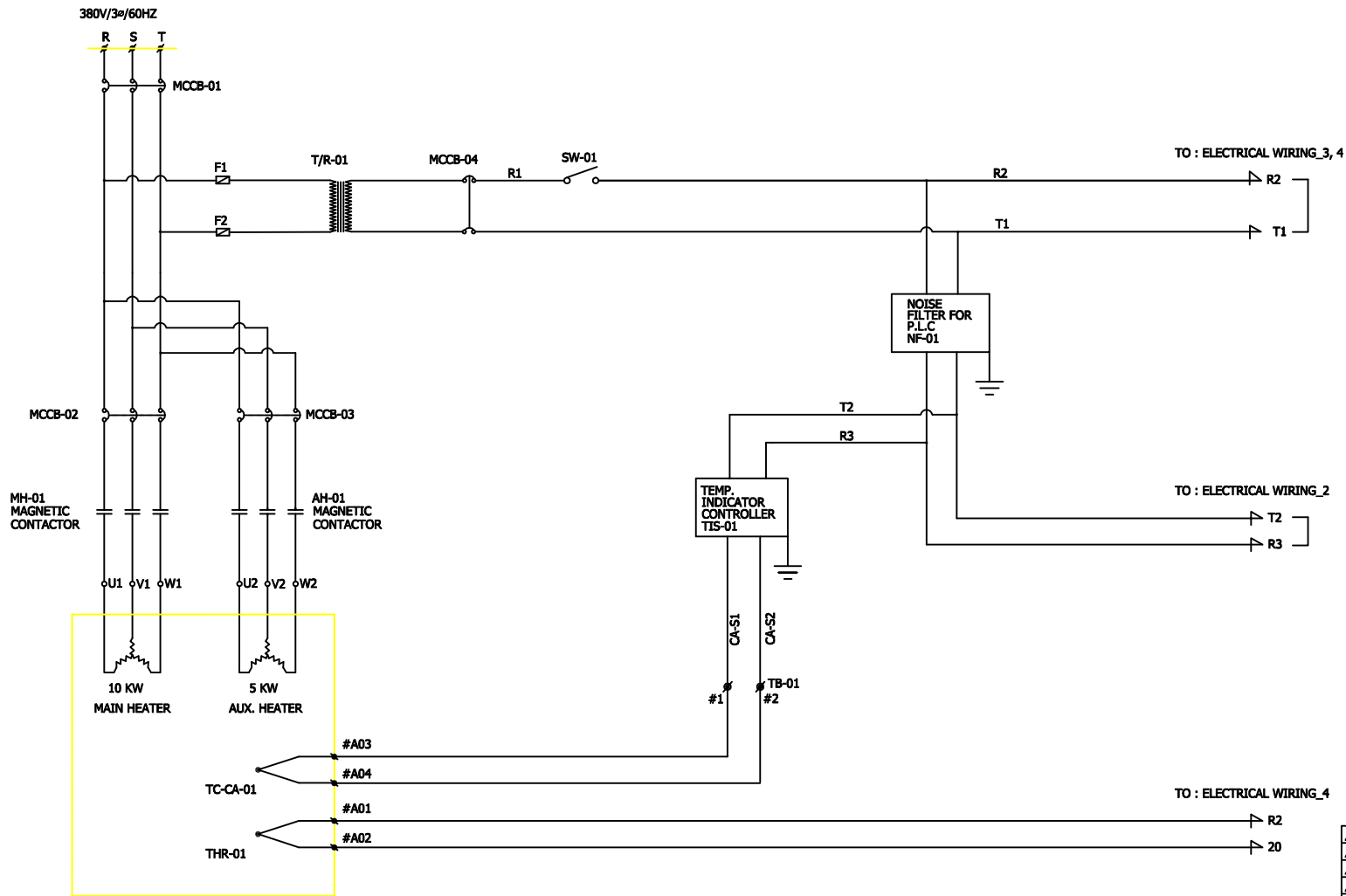
MANUFACTURER

TITLE
PEH-1100 OUTLINE

ITEM NO. PEH-1100 DWG NO. **GSA-PEH-1100-01** REV.

SCALE NONE

(A1 : 841mm x 594mm)

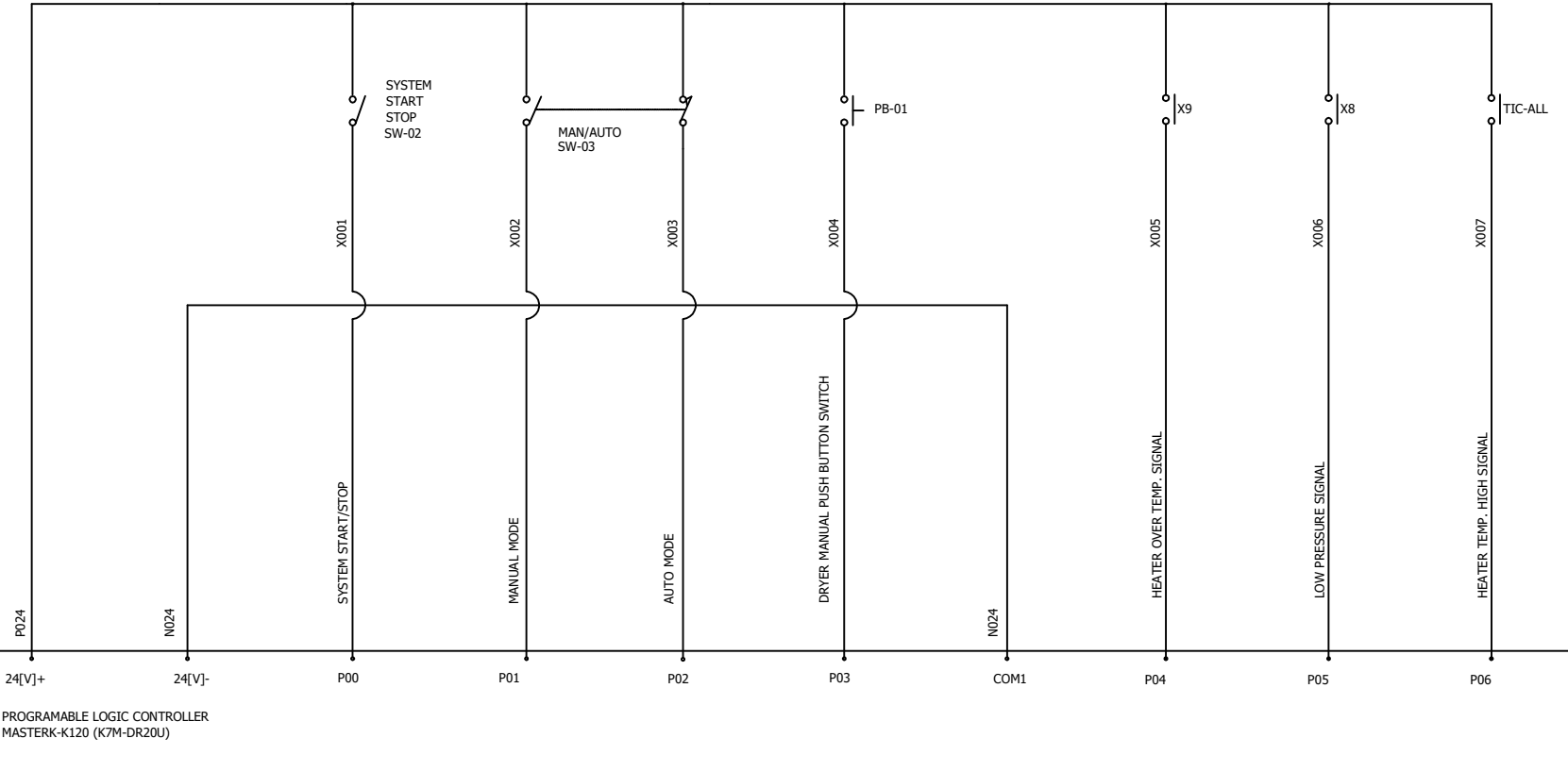


△										
△										
△										
△										
△										
△	2018.12.10	ISSUED FOR PROPOSAL	-	-	-	-	-	-	-	
REV.	DATE	DESCRIPTION	EWG	CHK	APPD	APPD	APPD	APPD	APPD	
PROJECT										
MANUFACTURER										
TITLE										
PEH-1100 WIRING										
ITEM NO.	PEH-1100	DWG NO.								REV.
SCALE	NONE	GSA-PEH-1100-03							△	

FROM :
ELECTRICAL WIRING_1

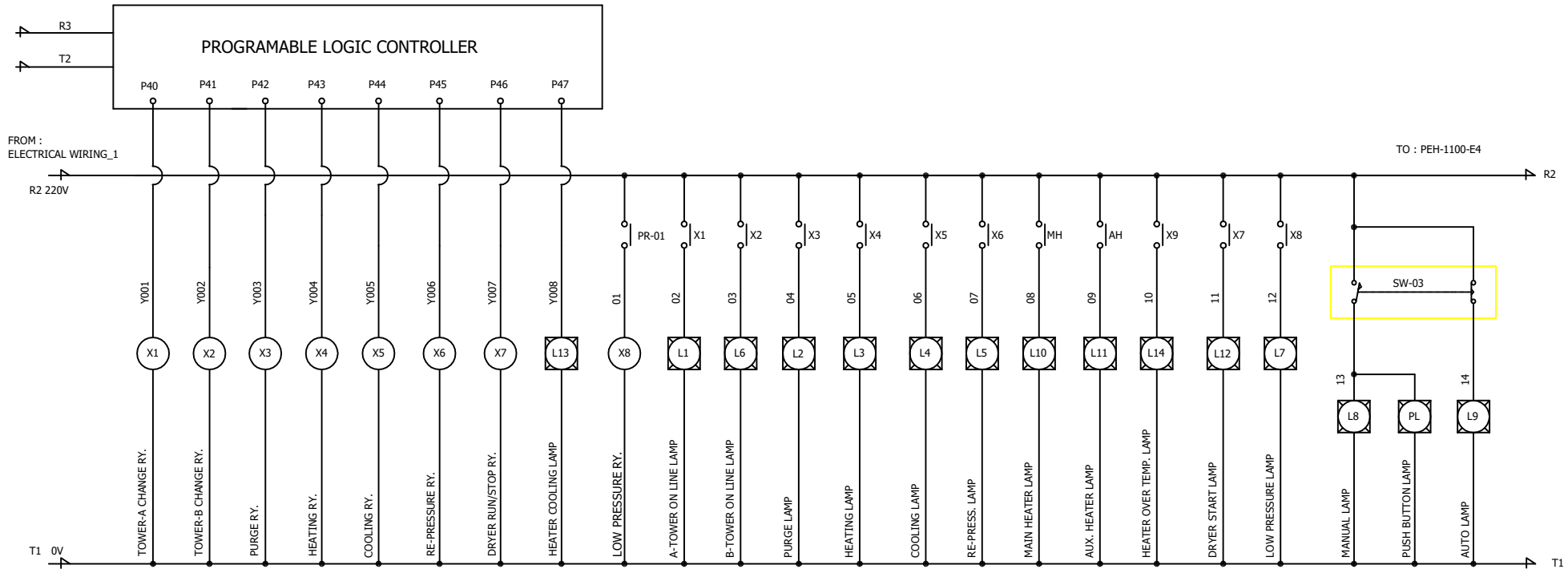


PROGRAMMABLE LOGIC CONTROLLER
MASTERK-K120 (K7M-DR20U)



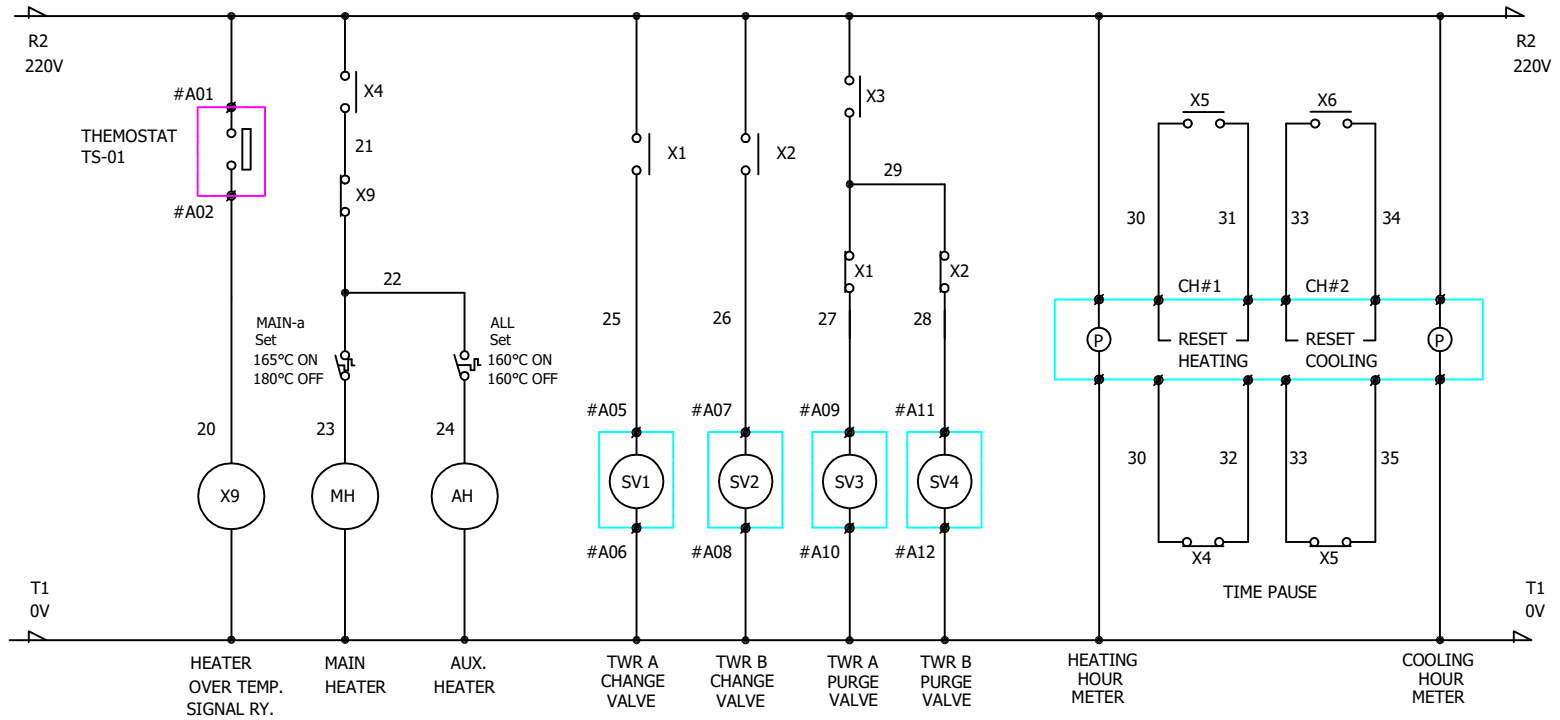
△										
△										
△										
△										
△	2018.12.10	ISSUED FOR PROPOSAL	-	-	-	-	-	-	-	
REV.	DATE	DESCRIPTION	EWG	CHK	APPD	APPD	APPD	APPD	APPD	
PROJECT										
MANUFACTURER										
TITLE										
PEH-1100 WIRING										
ITEM NO.	PEH-1100	DWG NO.		GSA-PEH-1100-04						REV.
SCALE	NONE									△

FROM : ELECTRICAL WIRING_1



△										
△										
△										
△										
△										
△	2018.12.10	ISSUED FOR PROPOSAL								
REV.	DATE	DESCRIPTION	DWG	CHK	APPD	APPD	APPD			
PROJECT										
MANUFACTURER										
TITLE										
PEH-1100 WIRING										
ITEM NO.	PEH-1100	DWG NO.								REV.
SCALE	NONE	GSA-PEH-1100-05							△	

FROM : ELECTRICAL WIRING_1



△										
△										
△										
△										
△										
△	2018.12.10	ISSUED FOR PROPOSAL								
REV.	DATE	DESCRIPTION	EWG	CHK	APPD	APPD	APPD			
PROJECT										
MANUFACTURER										
TITLE										
PEH-1100 WIRING										
ITEM NO.	PEH-1100	DWG NO.								REV.
SCALE	NONE	GSA-PEH-1100-06							△	