



	Air Filter		Rev.	Date	Prepared By	Checked By	Approved By
			1	2019.01.15	LEE.S.M.	JO.S.J.	KIM.H.W.
	Particulate Type		2	2020.09.23	WOO.I.H.	JO.S.J.	KIM.H.W.
			3				
4							
Project Name		-		Model Name		HYF-40-250A	
1	SPECIFICATION						
2	Element Type	Particulate		Inlet Flow Rate	330	m3/min	
3	Element Quantity	19	EA	Inlet Pressure	7	barg	
4	Element Filtration	40	micron	Inlet Temp.	38	°C	
5		-	ppm	Outlet Flow Rate	330	m3/min	
6	Element Design Temp.	65	°C	Outlet Pressure	6.8	barg	
7	Flow Direction	Outside to Inside		Outlet Temp.	38	°C	
8	Design Code	KS B 6750-3		Pressure Drop	0.2	bar	
9	Auto Drain	HAD-30		Design Pressure	9.7	barg	
10				Design Temperature	100	°C	
11	CONSTRUCTION						
12	Inlet Connection	250A	KS 10K SO.FF.	Dimension (W x L)	1200 X 2790	mm	
13	Outlet Connection	250A	KS 10K SO.FF.	Weight	400	kg	
14	Drain Connection	25A	PT Female Screw	Color (Munsell)	5.7PB 4.1/9.9		
15	MATERIALS						
16	Head	SS275					
17	Bowl	SPP					
18	Flange	SS275					
19	Gasket	Non-Asbestos					
20	Element	Polyethylene					
21	Bolt / Nut	SS400					
22	STANDRAD FEATURES AND CONTROL						
23	Pressure Gauge	YES					
24	Differential Indicator	NO					
25	Differential Transmitter	NO					
26	Auto Drain	YES					
27	NOTES						
28							
29							
30							
31							
32							
33							
34							
35							
36							
37							
38							
39							
40							
41							
42							
43							
44							
45							

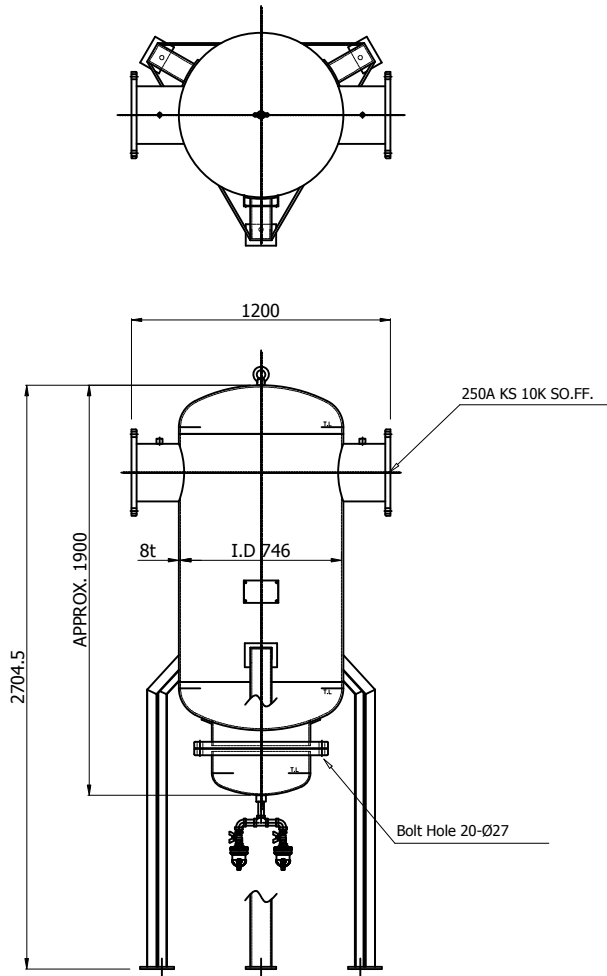
	Air Filter		Rev.	Date	Prepared By	Checked By	Approved By
			1	2019.01.15	LEE.S.M.	JO.S.J.	KIM.H.W.
	Particulate Type		2	2020.09.23	WOO.I.H.	JO.S.J.	KIM.H.W.
			3				
4							
Project Name		-		Model Name		HYF-5-250A	
1	SPECIFICATION						
2	Element Type	Particulate		Inlet Flow Rate	330	m3/min	
3	Element Quantity	19	EA	Inlet Pressure	7	barg	
4	Element Filtration	5	micron	Inlet Temp.	38	°C	
5		-	ppm	Outlet Flow Rate	330	m3/min	
6	Element Design Temp.	65	°C	Outlet Pressure	6.8	barg	
7	Flow Direction	Outside to Inside		Outlet Temp.	38	°C	
8	Design Code	KS B 6750-3		Pressure Drop	0.2	bar	
9	Auto Drain	HAD-30		Design Pressure	9.7	barg	
10				Design Temperature	100	°C	
11	CONSTRUCTION						
12	Inlet Connection	250A	KS 10K SO.FF.	Dimension (W x L)	1200 X 2790	mm	
13	Outlet Connection	250A	KS 10K SO.FF.	Weight	400	kg	
14	Drain Connection	25A	PT Female Screw	Color (Munsell)	5.7PB 4.1/9.9		
15	MATERIALS						
16	Head	SS275					
17	Bowl	SPP					
18	Flange	SS275					
19	Gasket	Non-Asbestos					
20	Element	Polyethylene					
21	Bolt / Nut	SS400					
22	STANDRAD FEATURES AND CONTROL						
23	Pressure Gauge	YES					
24	Differential Indicator	NO					
25	Differential Transmitter	NO					
26	Auto Drain	YES					
27	NOTES						
28							
29							
30							
31							
32							
33							
34							
35							
36							
37							
38							
39							
40							
41							
42							
43							
44							
45							

	Air Filter		Rev.	Date	Prepared By	Checked By	Approved By
			1	2019.01.15	LEE.S.M.	JO.S.J.	KIM.H.W.
	Coalescer Type		2	2020.09.23	WOO.I.H.	JO.S.J.	KIM.H.W.
			3				
4							
Project Name		-		Model Name		HYF-1-250A	
1	SPECIFICATION						
2	Element Type	Coalescer		Inlet Flow Rate	330	m3/min	
3	Element Quantity	19	EA	Inlet Pressure	7	barg	
4	Element Filtration	1	micron	Inlet Temp.	38	°C	
5		1	ppm	Outlet Flow Rate	330	m3/min	
6	Element Design Temp.	54	°C	Outlet Pressure	6.8	barg	
7	Flow Direction	Inside to Outside		Outlet Temp.	38	°C	
8	Design Code	KS B 6750-3		Pressure Drop	0.2	bar	
9	Auto Drain	HAD-30		Design Pressure	9.7	barg	
10				Design Temperature	100	°C	
11	CONSTRUCTION						
12	Inlet Connection	250A	KS 10K SO.FF.	Dimension (W x L)	1200 X 2790	mm	
13	Outlet Connection	250A	KS 10K SO.FF.	Weight	400	kg	
14	Drain Connection	25A	PT Female Screw	Color (Munsell)	5.7PB 4.1/9.9		
15	MATERIALS						
16	Head	SS275					
17	Bowl	SPP					
18	Flange	SS275					
19	Gasket	Non-Asbestos					
20	Element	Borosilicate					
21	Bolt / Nut	SS400					
22	STANDRAD FEATURES AND CONTROL						
23	Pressure Gauge	YES					
24	Differential Indicator	NO					
25	Differential Transmitter	NO					
26	Auto Drain	YES					
27	NOTES						
28							
29							
30							
31							
32							
33							
34							
35							
36							
37							
38							
39							
40							
41							
42							
43							
44							
45							

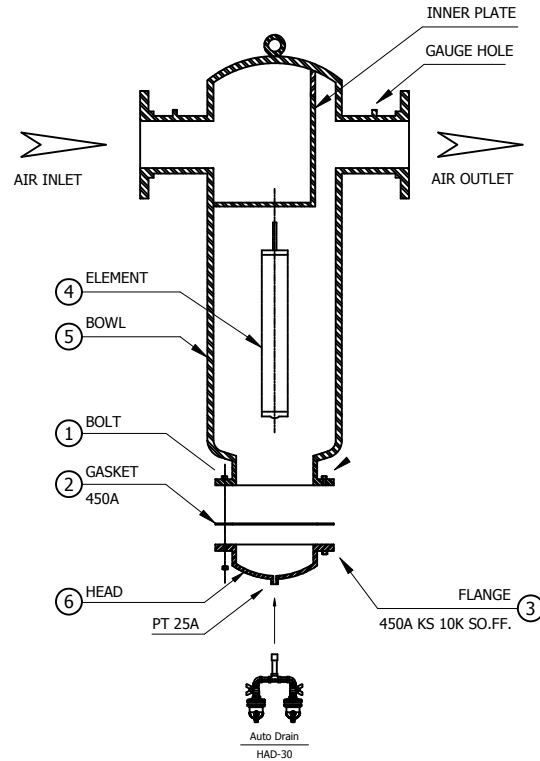
	Air Filter		Rev.	Date	Prepared By	Checked By	Approved By
			1	2019.01.15	LEE.S.M.	JO.S.J.	KIM.H.W.
	Coalescer Type		2	2020.09.23	WOO.I.H.	JO.S.J.	KIM.H.W.
			3				
4							
Project Name		-		Model Name		HYF-0.1-250A	
SPECIFICATION							
2	Element Type	Coalescer		Inlet Flow Rate	330	m3/min	
3	Element Quantity	19	EA	Inlet Pressure	7	barg	
4	Element Filtration	1	micron	Inlet Temp.	38	°C	
5		0.1	ppm	Outlet Flow Rate	330	m3/min	
6	Element Design Temp.	54	°C	Outlet Pressure	6.8	barg	
7	Flow Direction	Inside to Outside		Outlet Temp.	38	°C	
8	Design Code	KS B 6750-3		Pressure Drop	0.2	bar	
9	Auto Drain	HAD-30		Design Pressure	9.7	barg	
10				Design Temperature	100	°C	
CONSTRUCTION							
12	Inlet Connection	250A	KS 10K SO.FF.	Dimension (W x L)	1200 X 2790	mm	
13	Outlet Connection	250A	KS 10K SO.FF.	Weight	400	kg	
14	Drain Connection	25A	PT Female Screw	Color (Munsell)	5.7PB 4.1/9.9		
MATERIALS							
16	Head	SS275					
17	Bowl	SPP					
18	Flange	SS275					
19	Gasket	Non-Asbestos					
20	Element	Borosilicate					
21	Bolt / Nut	SS400					
STANDRAD FEATURES AND CONTROL							
23	Pressure Gauge	YES					
24	Differential Indicator	NO					
25	Differential Transmitter	NO					
26	Auto Drain	YES					
NOTES							
28							
29							
30							
31							
32							
33							
34							
35							
36							
37							
38							
39							
40							
41							
42							
43							
44							
45							

	Air Filter		Rev.	Date	Prepared By	Checked By	Approved By
			1	2019.01.15	LEE.S.M.	JO.S.J.	KIM.H.W.
	Coalescer Type		2	2020.09.23	WOO.I.H.	JO.S.J.	KIM.H.W.
			3				
4							
Project Name			-		Model Name		HYF-0.01-250A
SPECIFICATION							
2	Element Type	Coalescer		Inlet Flow Rate	330	m3/min	
3	Element Quantity	19	EA	Inlet Pressure	7	barg	
4	Element Filtration	1	micron	Inlet Temp.	38	°C	
5		0.01	ppm	Outlet Flow Rate	330	m3/min	
6	Element Design Temp.	54	°C	Outlet Pressure	6.8	barg	
7	Flow Direction	Inside to Outside		Outlet Temp.	38	°C	
8	Design Code	KS B 6750-3		Pressure Drop	0.2	bar	
9	Auto Drain	HAD-30		Design Pressure	9.7	barg	
10				Design Temperature	100	°C	
CONSTRUCTION							
12	Inlet Connection	250A	KS 10K SO.FF.	Dimension (W x L)	1200 X 2790	mm	
13	Outlet Connection	250A	KS 10K SO.FF.	Weight	400	kg	
14	Drain Connection	25A	PT Female Screw	Color (Munsell)	5.7PB 4.1/9.9		
MATERIALS							
16	Head	SS275					
17	Bowl	SPP					
18	Flange	SS275					
19	Gasket	Non-Asbestos					
20	Element	Borosilicate					
21	Bolt / Nut	SS400					
STANDRAD FEATURES AND CONTROL							
23	Pressure Gauge	YES					
24	Differential Indicator	NO					
25	Differential Transmitter	NO					
26	Auto Drain	YES					
NOTES							
28							
29							
30							
31							
32							
33							
34							
35							
36							
37							
38							
39							
40							
41							
42							
43							
44							
45							

DIMENSION



ASSEMBLY



MODEL	HYF-0.01-250A		
CAPACITY	330.0 m ³ /min		
INLET AIR TEMPERATURE	MAX. 54 °C		
MAX. INLET AIR PRESSURE	9.7 barg		
ELEMENT TYPE	COALESCER		
FILTRATION	1 MICRON		
	0.01 PPM		
IN/OUT CONNECTION	250A FLANGE		
FLOW DIRECTION	INSIDE TO OUTSIDE		
6	HEAD	SS275	2
5	BOWL	SPP	1
4	ELEMENT	BOROSILICATE	19
3	FLANGE	SS275	2
2	GASKET	NON-ASBESTOS	1
1	BOLT	M24 X 100L	20
NO.	PART NAME	DESCRIPTION	QTY

NOTE

1. THE DIFFERENTIAL PRESSURE GAUGE IS OPTIONAL.

△										
△										
△										
△										
REV. NO.	2020.09.24	ISSUED FOR PROPOSAL								
DATE		DESCRIPTION	ENGR	CHK	APPRD	APPRD	APPRD			
PROJECT										
MANUFACTURER										
TITLE	HYF-0.01-250A OUTLINE									
ITEM NO.	HYF-250A	DWG NO.	GSA-HYF-250A-05							REV.
SCALE	NONE									



Air Filter

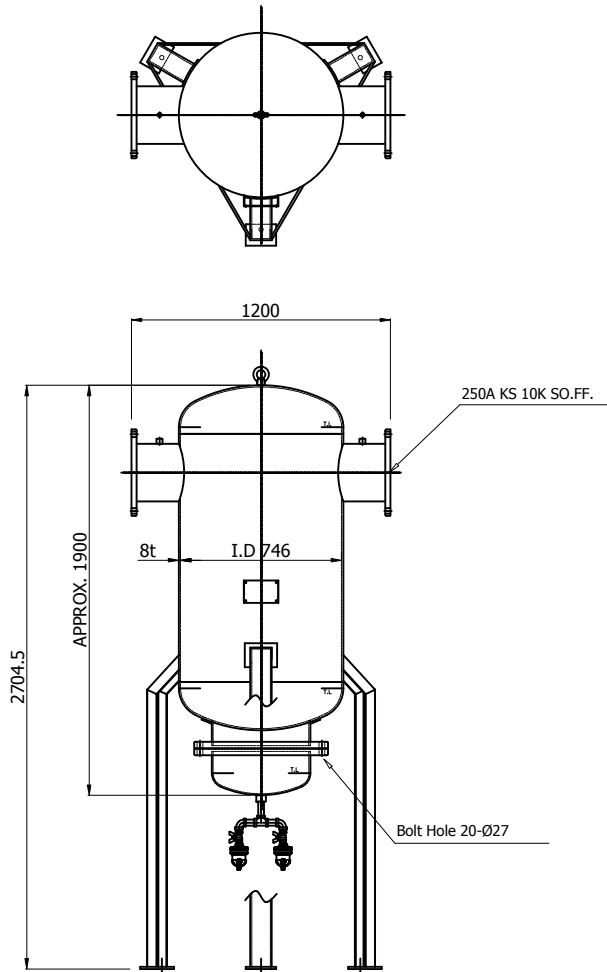
Coalescer Type

Rev.	Date	Prepared By	Checked By	Approved By
1	2019.01.15	LEE.S.M.	JO.S.J.	KIM.H.W.
2	2020.09.23	WOO.I.H.	JO.S.J.	KIM.H.W.
3				
4				

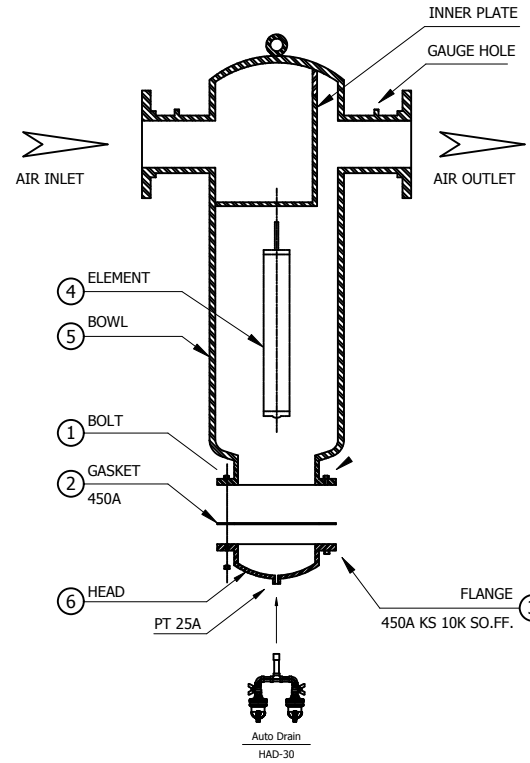
Project Name	-	Model Name	HYF-0.01F-250A
--------------	---	------------	----------------

1 SPECIFICATION					
2	Element Type	Coalescer		Inlet Flow Rate	330 m3/min
3	Element Quantity	19	EA	Inlet Pressure	7 barg
4	Element Filtration	1	micron	Inlet Temp.	38 °C
5		0.01	ppm	Outlet Flow Rate	330 m3/min
6	Element Design Temp.	54	°C	Outlet Pressure	6.8 barg
7	Flow Direction	Inside to Outside		Outlet Temp.	38 °C
8	Design Code	KS B 6750-3		Pressure Drop	0.2 bar
9	Auto Drain	HAD-30		Design Pressure	9.7 barg
10				Design Temperature	100 °C
11 CONSTRUCTION					
12	Inlet Connection	250A	KS 10K SO.FF.	Dimension (W x L)	1200 X 2790 mm
13	Outlet Connection	250A	KS 10K SO.FF.	Weight	400 kg
14	Drain Connection	25A	PT Female Screw	Color (Munsell)	5.7PB 4.1/9.9
15 MATERIALS					
16	Head	SS275			
17	Bowl	SPP			
18	Flange	SS275			
19	Gasket	Non-Asbestos			
20	Element	Borosilicate			
21	Bolt / Nut	SS400			
22 STANDRAD FEATURES AND CONTROL					
23	Pressure Gauge	YES			
24	Differential Indicator	NO			
25	Differential Transmitter	NO			
26	Auto Drain	YES			
27 NOTES					
28	- Added Carbon Layer				
29					
30					
31					
32					
33					
34					
35					
36					
37					
38					
39					
40					
41					
42					
43					
44					
45					

DIMENSION




ASSEMBLY




MODEL	HYF-0.01F-250A		
CAPACITY	330.0 m ³ /min		
INLET AIR TEMPERATURE	MAX. 54 °C		
MAX. INLET AIR PRESSURE	9.7 barg		
ELEMENT TYPE	COALESCER		
FILTRATION	1 MICRON 0.01 PPM(Carbon Layer)		
IN/OUT CONNECTION	250A FLANGE		
FLOW DIRECTION	INSIDE TO OUTSIDE		
6 HEAD	SS275	2	
5 BOWL	SPP	1	
4 ELEMENT	BOROSILICATE	19	
3 FLANGE	SS275	2	
2 GASKET	NON-ASBESTOS	1	
1 BOLT	M24 X 100L	20	
NO.	PART NAME	DESCRIPTION	QTY

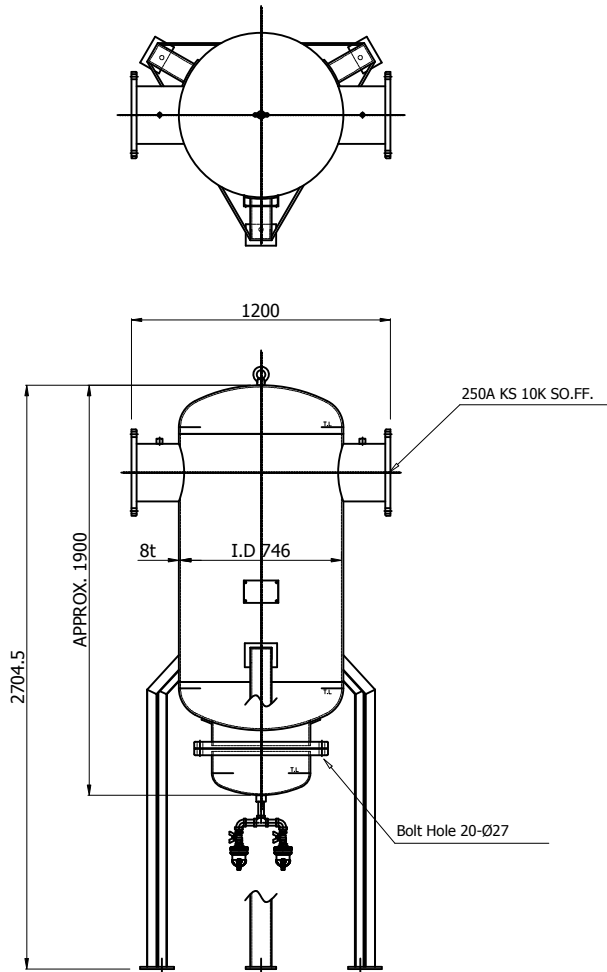
NOTE

1. THE DIFFERENTIAL PRESSURE GAUGE IS OPTIONAL.

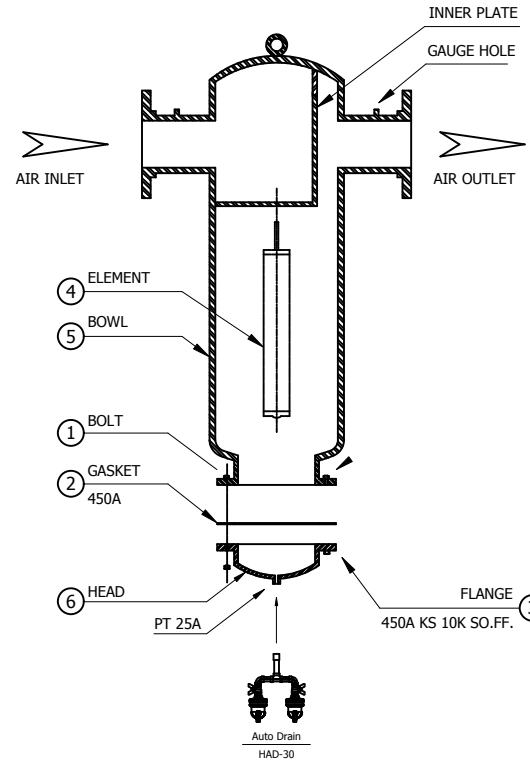
REV	NO.	DATE	DESCRIPTION	ENG	CHK	APPD	APPD
△							
△							
△							
△							
2020.09.24			ISSUED FOR PROPOSAL				
PROJECT							
MANUFACTURER							
 Global Standard Air & Gas							
TITLE							
HYF-0.01F-250A OUTLINE							
ITEM NO.	HYF-250A	DWG NO.	GSA-HYF-250A-06			REV	△
SCALE	NONE						

	Air Filter		Rev.	Date	Prepared By	Checked By	Approved By
			1	2019.01.15	LEE.S.M.	JO.S.J.	KIM.H.W.
	Adsorber Type		2	2020.09.23	WOO.I.H.	JO.S.J.	KIM.H.W.
			3				
4							
Project Name		-		Model Name		HYF-0.003-250A	
SPECIFICATION							
2	Element Type	Adsorber		Inlet Flow Rate	330	m3/min	
3	Element Quantity	19	EA	Inlet Pressure	7	barg	
4	Element Filtration	-	micron	Inlet Temp.	38	°C	
5		0.003	ppm	Outlet Flow Rate	330	m3/min	
6	Element Design Temp.	54	°C	Outlet Pressure	6.8	barg	
7	Flow Direction	Inside to Outside		Outlet Temp.	38	°C	
8	Design Code	KS B 6750-3		Pressure Drop	0.2	bar	
9	Auto Drain	HAD-30		Design Pressure	9.7	barg	
10				Design Temperature	100	°C	
CONSTRUCTION							
12	Inlet Connection	250A	KS 10K SO.FF.	Dimension (W x L)	1200 X 2790	mm	
13	Outlet Connection	250A	KS 10K SO.FF.	Weight	400	kg	
14	Drain Connection	25A	PT Female Screw	Color (Munsell)	5.7PB 4.1/9.9		
MATERIALS							
16	Head	SS275					
17	Bowl	SPP					
18	Flange	SS275					
19	Gasket	Non-Asbestos					
20	Element	Activated Carbon					
21	Bolt / Nut	SS400					
STANDRAD FEATURES AND CONTROL							
23	Pressure Gauge	YES					
24	Differential Indicator	NO					
25	Differential Transmitter	NO					
26	Auto Drain	YES					
NOTES							
28							
29							
30							
31							
32							
33							
34							
35							
36							
37							
38							
39							
40							
41							
42							
43							
44							
45							

DIMENSION




ASSEMBLY




MODEL	HYF-0.003-250A		
CAPACITY	330.0 m ³ /min		
INLET AIR TEMPERATURE	MAX. 54 °C		
MAX. INLET AIR PRESSURE	9.7 barg		
ELEMENT TYPE	ADSORBER		
FILTRATION	0.003 PPM		
IN/OUT CONNECTION	250A FLANGE		
FLOW DIRECTION	INSIDE TO OUTSIDE		
NO.	PART NAME	DESCRIPTION	QTY
6	HEAD	SS275	2
5	BOWL	SFP	1
4	ELEMENT	ACTIVATED CARBON	19
3	FLANGE	SS275	2
2	GASKET	NON-ASBESTOS	1
1	BOLT	M24 X 100L	20

NOTE

1. THE DIFFERENTIAL PRESSURE GAUGE IS OPTIONAL.

REV	NO.	DATE	DESCRIPTION	ENGR	CHK	APPRD	APPRD
△							
△							
△							
△							
△	2020.09.24		ISSUED FOR PROPOSAL				
PROJECT							
MANUFACTURER							
 Global Standard Air & Gas							
TITLE							
HYF-0.003-250A OUTLINE							
ITEM NO.	HYF-250A	QWS NO.	GSA-HYF-250A-07			REV	△
SCALE	NONE						

	Air Filter		Rev.	Date	Prepared By	Checked By	Approved By
			1	2019.01.15	LEE.S.M.	JO.S.J.	KIM.H.W.
	Coalescer Type		2	2020.09.23	WOO.I.H.	JO.S.J.	KIM.H.W.
			3				
4							
Project Name		-		Model Name		HYF-0.01(PARKER)-250A	
SPECIFICATION							
2	Element Type	Coalescer		Inlet Flow Rate	330	m3/min	
3	Element Quantity	19	EA	Inlet Pressure	7	barg	
4	Element Filtration	0.01	micron	Inlet Temp.	38	°C	
5		-	ppm	Outlet Flow Rate	330	m3/min	
6	Element Design Temp.	54	°C	Outlet Pressure	6.8	barg	
7	Flow Direction	Outside to Inside		Outlet Temp.	38	°C	
8	Design Code	KS B 6750-3		Pressure Drop	0.2	bar	
9	Auto Drain	HAD-30		Design Pressure	9.7	barg	
10				Design Temperature	100	°C	
CONSTRUCTION							
12	Inlet Connection	250A	KS 10K SO.FF.	Dimension (W x L)	1200 X 2790	mm	
13	Outlet Connection	250A	KS 10K SO.FF.	Weight	400	kg	
14	Drain Connection	25A	PT Female Screw	Color (Munsell)	5.7PB 4.1/9.9		
MATERIALS							
16	Head	SS275					
17	Bowl	SPP					
18	Flange	SS275					
19	Gasket	Non-Asbestos					
20	Element	Polyethylene					
21	Bolt / Nut	SS400					
STANDRAD FEATURES AND CONTROL							
23	Pressure Gauge	YES					
24	Differential Indicator	NO					
25	Differential Transmitter	NO					
26	Auto Drain	YES					
NOTES							
28							
29							
30							
31							
32							
33							
34							
35							
36							
37							
38							
39							
40							
41							
42							
43							
44							
45							

