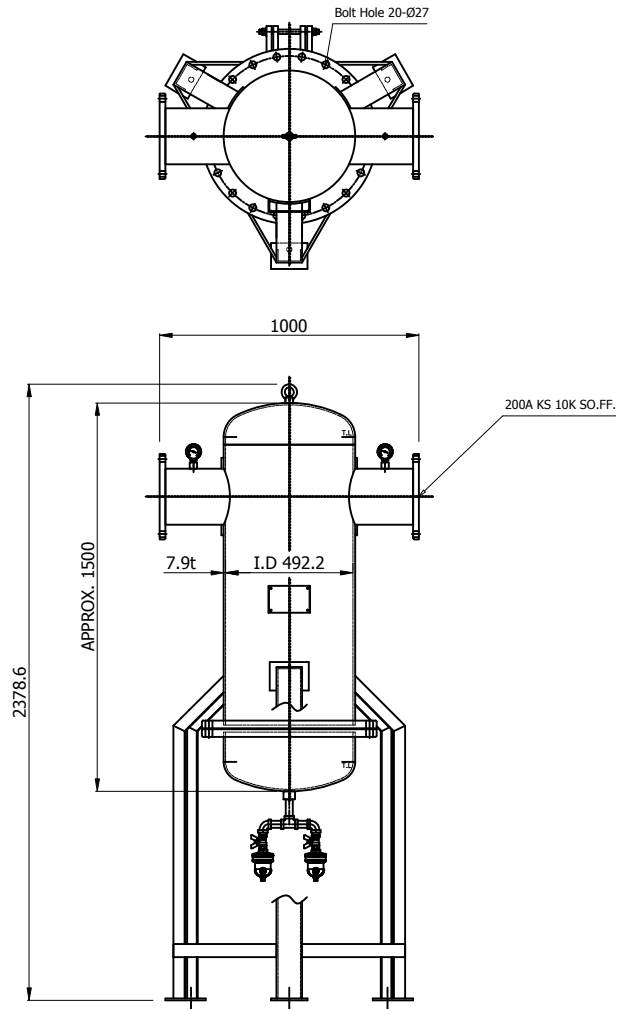
	<b>Air Filter</b>		Rev.	Date	Prepared By	Checked By	Approved By
			1	2019.01.15	LEE.S.M.	JO.S.J.	KIM.H.W.
	<b>Particulate Type</b>		2	2020.09.23	WOO.I.H.	JO.S.J.	KIM.H.W.
			3				
4							
Project Name		-		Model Name		HYF-40-200A	
<b>SPECIFICATION</b>							
2	Element Type	Particulate		Inlet Flow Rate	196	m3/min	
3	Element Quantity	11	EA	Inlet Pressure	7	barg	
4	Element Filtration	40	micron	Inlet Temp.	38	°C	
5		-	ppm	Outlet Flow Rate	196	m3/min	
6	Element Design Temp.	65	°C	Outlet Pressure	6.8	barg	
7	Flow Direction	Outside to Inside		Outlet Temp.	38	°C	
8	Design Code	KS B 6750-3		Pressure Drop	0.2	bar	
9	Auto Drain	HAD-30		Design Pressure	9.7	barg	
10				Design Temperature	100	°C	
<b>CONSTRUCTION</b>							
12	Inlet Connection	200A	KS 10K SO.FF.	Dimension (W x L)	1000 X 2378	mm	
13	Outlet Connection	200A	KS 10K SO.FF.	Weight	300	kg	
14	Drain Connection	25A	PT Female Screw	Color (Munsell)	5.7PB 4.1/9.9		
<b>MATERIALS</b>							
16	Head	SS275					
17	Bowl	SPP					
18	Flange	SS275					
19	Gasket	Non-Asbestos					
20	Element	Polyethylene					
21	Bolt / Nut	SS400					
<b>STANDRAD FEATURES AND CONTROL</b>							
23	Pressure Gauge	YES					
24	Differential Indicator	NO					
25	Differential Transmitter	NO					
26	Auto Drain	YES					
<b>NOTES</b>							
28							
29							
30							
31							
32							
33							
34							
35							
36							
37							
38							
39							
40							
41							
42							
43							
44							
45							

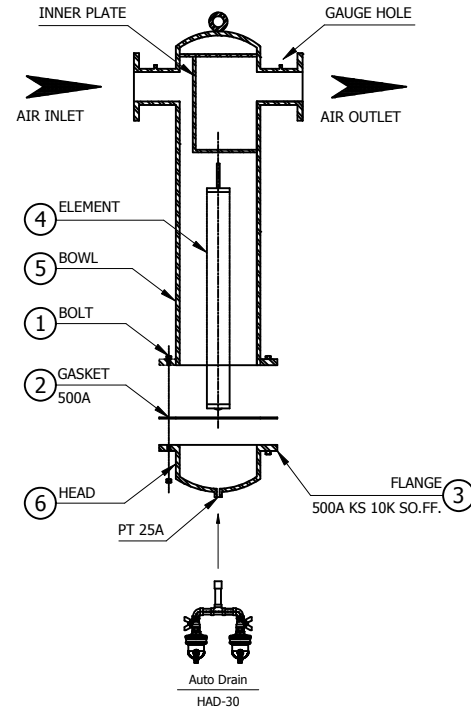
DIMENSION



NOTE


1. THE DIFFERENTIAL PRESSURE GAUGE IS OPTIONAL.

ASSEMBLY




MODEL	HYF-40-200A		
CAPACITY	196.0 m <sup>3</sup> /min		
INLET AIR TEMPERATURE	MAX. 65 °C		
MAX. INLET AIR PRESSURE	9.7 barg		
ELEMENT TYPE	PARTICULATE		
FILTRATION	40 MICRON		
IN/OUT CONNECTION	200A FLANGE		
FLOW DIRECTION	OUTSIDE TO INSIDE		
6	HEAD	SS275	2
5	BOWL	SPP	1
4	ELEMENT	POLTETHYLENE	11
3	FLANGE	SS275	2
2	GASKET	NON-ASBESTOS	1
1	BOLT	M24 X 100L	20
NO.	PART NAME	DESCRIPTION	QTY


▲																					
▲																					
▲																					
▲																					
REV. NO.	2008.09.24	ISSUED FOR PROPOSAL																			
PROJECT	-																				
MANUFACTURER																					
TITLE	HYF-40-200A OUTLINE																				
ITEM NO.	HYF-200A	CGWG NO.																		REV.	▲
SCALE	NONE	GSA-HYF-200A-01																			

	<b>Air Filter</b>		Rev.	Date	Prepared By	Checked By	Approved By
			1	2019.01.15	LEE.S.M.	JO.S.J.	KIM.H.W.
	<b>Particulate Type</b>		2	2020.09.23	WOO.I.H.	JO.S.J.	KIM.H.W.
			3				
4							
Project Name		-		Model Name		HYF-5-200A	
1	<b>SPECIFICATION</b>						
2	Element Type	Particulate		Inlet Flow Rate	196	m3/min	
3	Element Quantity	11	EA	Inlet Pressure	7	barg	
4	Element Filtration	5	micron	Inlet Temp.	38	°C	
5		-	ppm	Outlet Flow Rate	196	m3/min	
6	Element Design Temp.	65	°C	Outlet Pressure	6.8	barg	
7	Flow Direction	Outside to Inside		Outlet Temp.	38	°C	
8	Design Code	KS B 6750-3		Pressure Drop	0.2	bar	
9	Auto Drain	HAD-30		Design Pressure	9.7	barg	
10				Design Temperature	100	°C	
11	<b>CONSTRUCTION</b>						
12	Inlet Connection	200A	KS 10K SO.FF.	Dimension (W x L)	1000 X 2378	mm	
13	Outlet Connection	200A	KS 10K SO.FF.	Weight	300	kg	
14	Drain Connection	25A	PT Female Screw	Color (Munsell)	5.7PB 4.1/9.9		
15	<b>MATERIALS</b>						
16	Head	SS275					
17	Bowl	SPP					
18	Flange	SS275					
19	Gasket	Non-Asbestos					
20	Element	Polyethylene					
21	Bolt / Nut	SS400					
22	<b>STANDRAD FEATURES AND CONTROL</b>						
23	Pressure Gauge	YES					
24	Differential Indicator	NO					
25	Differential Transmitter	NO					
26	Auto Drain	YES					
27	<b>NOTES</b>						
28							
29							
30							
31							
32							
33							
34							
35							
36							
37							
38							
39							
40							
41							
42							
43							
44							
45							




	<b>Air Filter</b>		Rev.	Date	Prepared By	Checked By	Approved By
			1	2019.01.15	LEE.S.M.	JO.S.J.	KIM.H.W.
	<b>Coalescer Type</b>		2	2020.09.23	WOO.I.H.	JO.S.J.	KIM.H.W.
			3				
4							
Project Name		-		Model Name		HYF-1-200A	
1	<b>SPECIFICATION</b>						
2	Element Type	Coalescer		Inlet Flow Rate	196	m3/min	
3	Element Quantity	11	EA	Inlet Pressure	7	barg	
4	Element Filtration	1	micron	Inlet Temp.	38	°C	
5		1	ppm	Outlet Flow Rate	196	m3/min	
6	Element Design Temp.	54	°C	Outlet Pressure	6.8	barg	
7	Flow Direction	Inside to Outside		Outlet Temp.	38	°C	
8	Design Code	KS B 6750-3		Pressure Drop	0.2	bar	
9	Auto Drain	HAD-30		Design Pressure	9.7	barg	
10				Design Temperature	100	°C	
11	<b>CONSTRUCTION</b>						
12	Inlet Connection	200A	KS 10K SO.FF.	Dimension (W x L)	1000 X 2378	mm	
13	Outlet Connection	200A	KS 10K SO.FF.	Weight	300	kg	
14	Drain Connection	25A	PT Female Screw	Color (Munsell)	5.7PB 4.1/9.9		
15	<b>MATERIALS</b>						
16	Head	SS275					
17	Bowl	SPP					
18	Flange	SS275					
19	Gasket	Non-Asbestos					
20	Element	Borosilicate					
21	Bolt / Nut	SS400					
22	<b>STANDRAD FEATURES AND CONTROL</b>						
23	Pressure Gauge	YES					
24	Differential Indicator	NO					
25	Differential Transmitter	NO					
26	Auto Drain	YES					
27	<b>NOTES</b>						
28							
29							
30							
31							
32							
33							
34							
35							
36							
37							
38							
39							
40							
41							
42							
43							
44							
45							

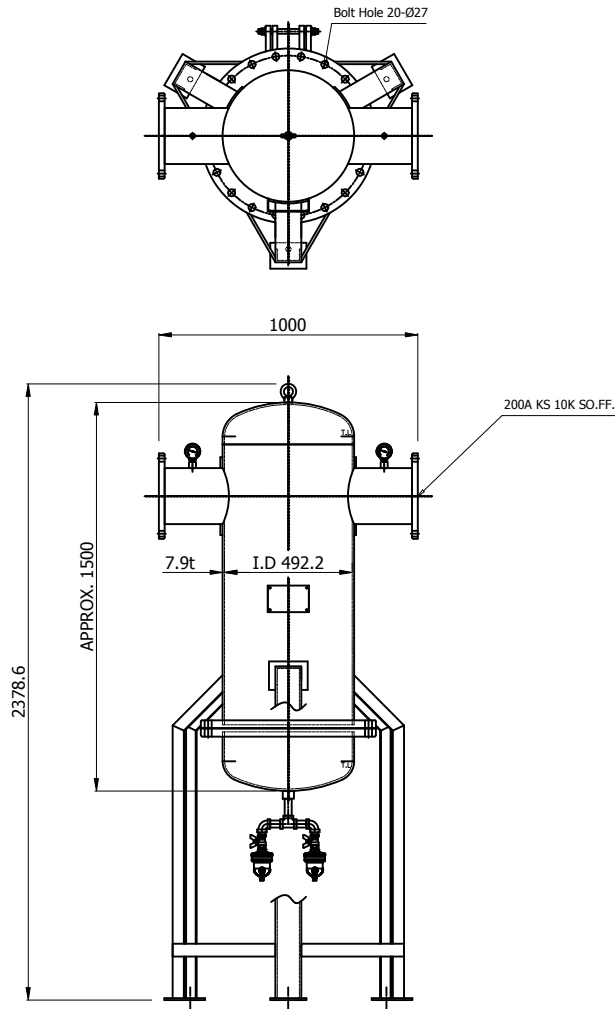


	<b>Air Filter</b>		Rev.	Date	Prepared By	Checked By	Approved By
			1	2019.01.15	LEE.S.M.	JO.S.J.	KIM.H.W.
	<b>Coalescer Type</b>		2	2020.09.23	WOO.I.H.	JO.S.J.	KIM.H.W.
			3				
4							
Project Name		-		Model Name		HYF-0.1-200A	
<b>SPECIFICATION</b>							
2	Element Type	Coalescer		Inlet Flow Rate	196	m3/min	
3	Element Quantity	11	EA	Inlet Pressure	7	barg	
4	Element Filtration	1	micron	Inlet Temp.	38	°C	
5		0.1	ppm	Outlet Flow Rate	196	m3/min	
6	Element Design Temp.	54	°C	Outlet Pressure	6.8	barg	
7	Flow Direction	Inside to Outside		Outlet Temp.	38	°C	
8	Design Code	KS B 6750-3		Pressure Drop	0.2	bar	
9	Auto Drain	HAD-30		Design Pressure	9.7	barg	
10				Design Temperature	100	°C	
<b>CONSTRUCTION</b>							
12	Inlet Connection	200A	KS 10K SO.FF.	Dimension (W x L)	1000 X 2378	mm	
13	Outlet Connection	200A	KS 10K SO.FF.	Weight	300	kg	
14	Drain Connection	25A	PT Female Screw	Color (Munsell)	5.7PB 4.1/9.9		
<b>MATERIALS</b>							
16	Head	SS275					
17	Bowl	SPP					
18	Flange	SS275					
19	Gasket	Non-Asbestos					
20	Element	Borosilicate					
21	Bolt / Nut	SS400					
<b>STANDRAD FEATURES AND CONTROL</b>							
23	Pressure Gauge	YES					
24	Differential Indicator	NO					
25	Differential Transmitter	NO					
26	Auto Drain	YES					
<b>NOTES</b>							
28							
29							
30							
31							
32							
33							
34							
35							
36							
37							
38							
39							
40							
41							
42							
43							
44							
45							

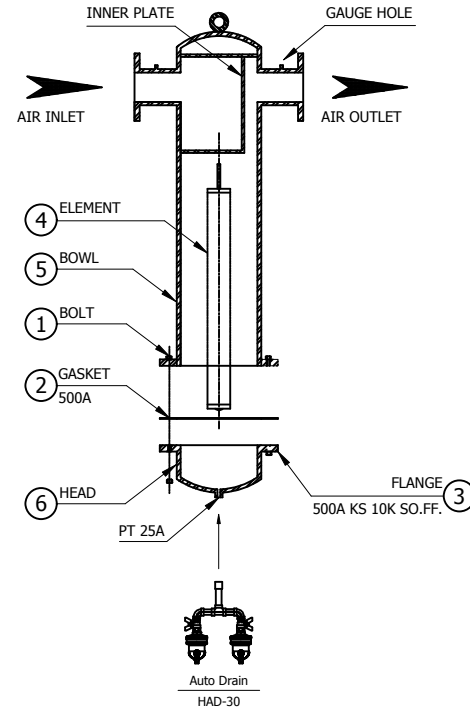


	<b>Air Filter</b>		Rev.	Date	Prepared By	Checked By	Approved By
			1	2019.01.15	LEE.S.M.	JO.S.J.	KIM.H.W.
	<b>Coalescer Type</b>		2	2020.09.23	WOO.I.H.	JO.S.J.	KIM.H.W.
			3				
4							
Project Name		-		Model Name		HYF-0.01-200A	
<b>SPECIFICATION</b>							
2	Element Type	Coalescer		Inlet Flow Rate	196	m3/min	
3	Element Quantity	11	EA	Inlet Pressure	7	barg	
4	Element Filtration	1	micron	Inlet Temp.	38	°C	
5		0.01	ppm	Outlet Flow Rate	196	m3/min	
6	Element Design Temp.	54	°C	Outlet Pressure	6.8	barg	
7	Flow Direction	Inside to Outside		Outlet Temp.	38	°C	
8	Design Code	KS B 6750-3		Pressure Drop	0.2	bar	
9	Auto Drain	HAD-30		Design Pressure	9.7	barg	
10				Design Temperature	100	°C	
<b>CONSTRUCTION</b>							
12	Inlet Connection	200A	KS 10K SO.FF.	Dimension (W x L)	1000 X 2378	mm	
13	Outlet Connection	200A	KS 10K SO.FF.	Weight	300	kg	
14	Drain Connection	25A	PT Female Screw	Color (Munsell)	5.7PB 4.1/9.9		
<b>MATERIALS</b>							
16	Head	SS275					
17	Bowl	SPP					
18	Flange	SS275					
19	Gasket	Non-Asbestos					
20	Element	Borosilicate					
21	Bolt / Nut	SS400					
<b>STANDRAD FEATURES AND CONTROL</b>							
23	Pressure Gauge	YES					
24	Differential Indicator	NO					
25	Differential Transmitter	NO					
26	Auto Drain	YES					
<b>NOTES</b>							
28							
29							
30							
31							
32							
33							
34							
35							
36							
37							
38							
39							
40							
41							
42							
43							
44							
45							

**DIMENSION**



**ASSEMBLY**




MODEL	HYF-0.01-200A		
CAPACITY	196.0 m <sup>3</sup> /min		
INLET AIR TEMPERATURE	MAX. 54 °C		
MAX. INLET AIR PRESSURE	9.7 barg		
ELEMENT TYPE	COALESCER		
FILTRATION	1 MICRON		
	0.01 PPM		
IN/OUT CONNECTION	200A FLANGE		
FLOW DIRECTION	INSIDE TO OUTSIDE		
6	HEAD	SS275	2
5	BOWL	SPP	1
4	ELEMENT	BOROSILICATE	11
3	FLANGE	SS275	2
2	GASKET	NON-ASBESTOS	1
1	BOLT	M24 X 100L	20
NO.	PART NAME	DESCRIPTION	QTY


**NOTE**

1. THE DIFFERENTIAL PRESSURE GAUGE IS OPTIONAL.

△																				
△																				
△																				
△																				
REV. NO.	2008.09.24	ISSUED FOR PROPOSAL																		
PROJECT	-																			
MANUFACTURER																				
TITLE	HYF-0.01-200A OUTLINE																			
ITEM NO.	HYF-200A	DWG NO.	GSA-HYF-200A-05																REV.	△
SCALE	NONE																			

	<b>Air Filter</b>		Rev.	Date	Prepared By	Checked By	Approved By
			1	2019.01.15	LEE.S.M.	JO.S.J.	KIM.H.W.
	<b>Coalescer Type</b>		2	2020.09.23	WOO.I.H.	JO.S.J.	KIM.H.W.
			3				
4							
Project Name			-		Model Name		HYF-0.01F-200A
<b>SPECIFICATION</b>							
2	Element Type	Coalescer		Inlet Flow Rate	196	m3/min	
3	Element Quantity	11	EA	Inlet Pressure	7	barg	
4	Element Filtration	1	micron	Inlet Temp.	38	°C	
5		0.01	ppm	Outlet Flow Rate	196	m3/min	
6	Element Design Temp.	54	°C	Outlet Pressure	6.8	barg	
7	Flow Direction	Inside to Outside		Outlet Temp.	38	°C	
8	Design Code	KS B 6750-3		Pressure Drop	0.2	bar	
9	Auto Drain	HAD-30		Design Pressure	9.7	barg	
10				Design Temperature	100	°C	
<b>CONSTRUCTION</b>							
12	Inlet Connection	200A	KS 10K SO.FF.	Dimension (W x L)	1000 X 2378	mm	
13	Outlet Connection	200A	KS 10K SO.FF.	Weight	300	kg	
14	Drain Connection	25A	PT Female Screw	Color (Munsell)	5.7PB 4.1/9.9		
<b>MATERIALS</b>							
16	Head	SS275					
17	Bowl	SPP					
18	Flange	SS275					
19	Gasket	Non-Asbestos					
20	Element	Borosilicate					
21	Bolt / Nut	SS400					
<b>STANDRAD FEATURES AND CONTROL</b>							
23	Pressure Gauge	YES					
24	Differential Indicator	NO					
25	Differential Transmitter	NO					
26	Auto Drain	YES					
<b>NOTES</b>							
28	- Added Carbon Layer						
29							
30							
31							
32							
33							
34							
35							
36							
37							
38							
39							
40							
41							
42							
43							
44							
45							



	<b>Air Filter</b>		Rev.	Date	Prepared By	Checked By	Approved By
			1	2019.01.15	LEE.S.M.	JO.S.J.	KIM.H.W.
	<b>Adsorber Type</b>		2	2020.09.23	WOO.I.H.	JO.S.J.	KIM.H.W.
			3				
4							
Project Name		-		Model Name		HYF-0.003-200A	
1	<b>SPECIFICATION</b>						
2	Element Type	Adsorber		Inlet Flow Rate	196	m3/min	
3	Element Quantity	11	EA	Inlet Pressure	7	barg	
4	Element Filtration	-	micron	Inlet Temp.	38	°C	
5		0.003	ppm	Outlet Flow Rate	196	m3/min	
6	Element Design Temp.	54	°C	Outlet Pressure	6.8	barg	
7	Flow Direction	Inside to Outside		Outlet Temp.	38	°C	
8	Design Code	KS B 6750-3		Pressure Drop	0.2	bar	
9	Auto Drain	HAD-30		Design Pressure	9.7	barg	
10				Design Temperature	100	°C	
11	<b>CONSTRUCTION</b>						
12	Inlet Connection	200A	KS 10K SO.FF.	Dimension (W x L)	1000 X 2378	mm	
13	Outlet Connection	200A	KS 10K SO.FF.	Weight	300	kg	
14	Drain Connection	25A	PT Female Screw	Color (Munsell)	5.7PB 4.1/9.9		
15	<b>MATERIALS</b>						
16	Head	SS275					
17	Bowl	SPP					
18	Flange	SS275					
19	Gasket	Non-Asbestos					
20	Element	Activated Carbon					
21	Bolt / Nut	SS400					
22	<b>STANDRAD FEATURES AND CONTROL</b>						
23	Pressure Gauge	YES					
24	Differential Indicator	NO					
25	Differential Transmitter	NO					
26	Auto Drain	YES					
27	<b>NOTES</b>						
28							
29							
30							
31							
32							
33							
34							
35							
36							
37							
38							
39							
40							
41							
42							
43							
44							
45							





## Air Filter

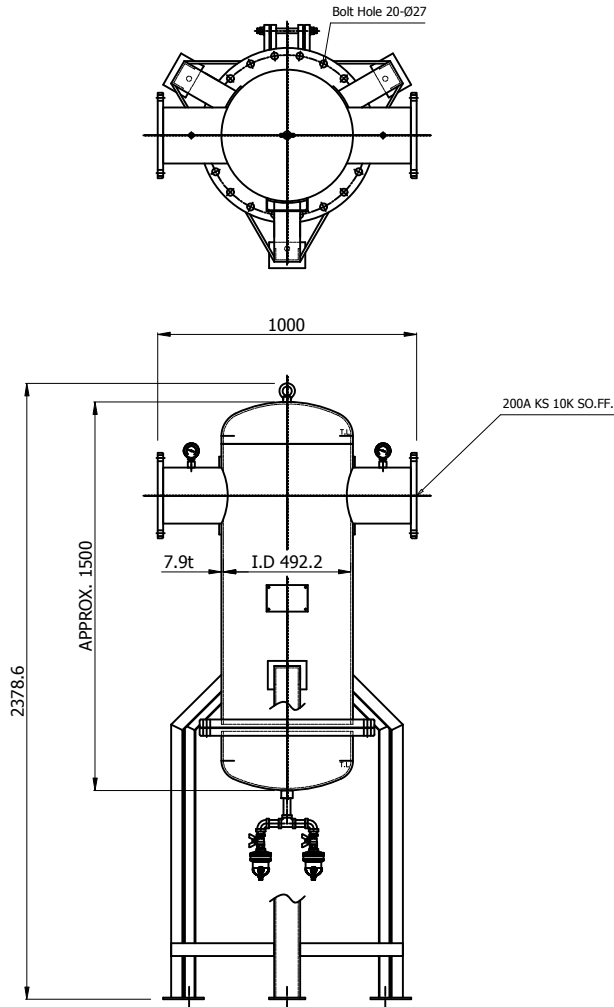
### Coalescer Type

Rev.	Date	Prepared By	Checked By	Approved By
1	2019.01.15	LEE.S.M.	JO.S.J.	KIM.H.W.
2	2020.09.23	WOO.I.H.	JO.S.J.	KIM.H.W.
3				
4				

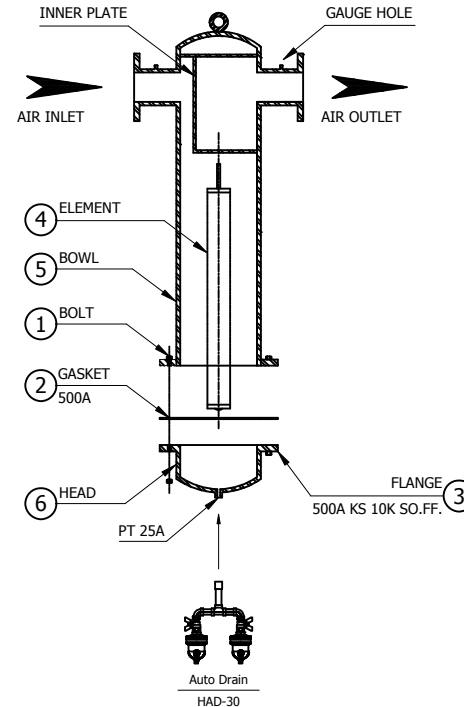
Project Name	-	Model Name	HYF-0.01(PARKER)-200A
--------------	---	------------	-----------------------

1 SPECIFICATION					
2	Element Type	Coalescer		Inlet Flow Rate	196 m3/min
3	Element Quantity	11	EA	Inlet Pressure	7 barg
4	Element Filtration	0.01	micron	Inlet Temp.	38 °C
5		-	ppm	Outlet Flow Rate	196 m3/min
6	Element Design Temp.	54	°C	Outlet Pressure	6.8 barg
7	Flow Direction	Outside to Inside		Outlet Temp.	38 °C
8	Design Code	KS B 6750-3		Pressure Drop	0.2 bar
9	Auto Drain	HAD-30		Design Pressure	9.7 barg
10				Design Temperature	100 °C
11 CONSTRUCTION					
12	Inlet Connection	200A	KS 10K SO.FF.	Dimension (W x L)	1000 X 2378 mm
13	Outlet Connection	200A	KS 10K SO.FF.	Weight	300 kg
14	Drain Connection	25A	PT Female Screw	Color (Munsell)	5.7PB 4.1/9.9
15 MATERIALS					
16	Head	SS275			
17	Shell	SPP			
18	Flange	SS275			
19	Gasket	Non-Asbestos			
20	Element	Glass Fiber			
21	Bolt / Nut	SS400			
22 STANDRAD FEATURES AND CONTROL					
23	Pressure Gauge	YES			
24	Differential Indicator	NO			
25	Differential Transmitter	NO			
26	Auto Drain	YES			
27 NOTES					
28					
29					
30					
31					
32					
33					
34					
35					
36					
37					
38					
39					
40					
41					
42					
43					
44					
45					

**DIMENSION**



**ASSEMBLY**



MODEL	HYF-0.01(PARKER)-200A		
CAPACITY	196 m <sup>3</sup> /min		
INLET AIR TEMPERATURE	MAX. 54 °C		
MAX. INLET AIR PRESSURE	9.7 barg		
ELEMENT TYPE	COALESCER		
FILTRATION	0.01 MICRON		
IN/OUT CONNECTION	200A FLANGE		
FLOW DIRECTION	OUTSIDE TO INSIDE		
6	HEAD	SS275	2
5	BOWL	SPP	1
4	ELEMENT	GLASS FIBER	11
3	FLANGE	SS275	2
2	GASKET	NON-ASBESTOS	1
1	BOLT	M22 X 75L	20
NO.	PART NAME	DESCRIPTION	QTY

**NOTE**

1. THE DIFFERENTIAL PRESSURE GAUGE IS OPTIONAL.

△																				
△																				
△																				
△																				
REV. NO.	2020.09.24	ISSUED FOR PROPOSAL																		
PROJECT																				
MANUFACTURER																				
TITLE	HYF-0.01(PARKER)-200A OUTLINE																			
ITEM NO.	HYF-200A	DWG NO.	GSA-HYF-200A-08	REV.																
SCALE	NONE	(A1 : 841mm x 594mm)																		