
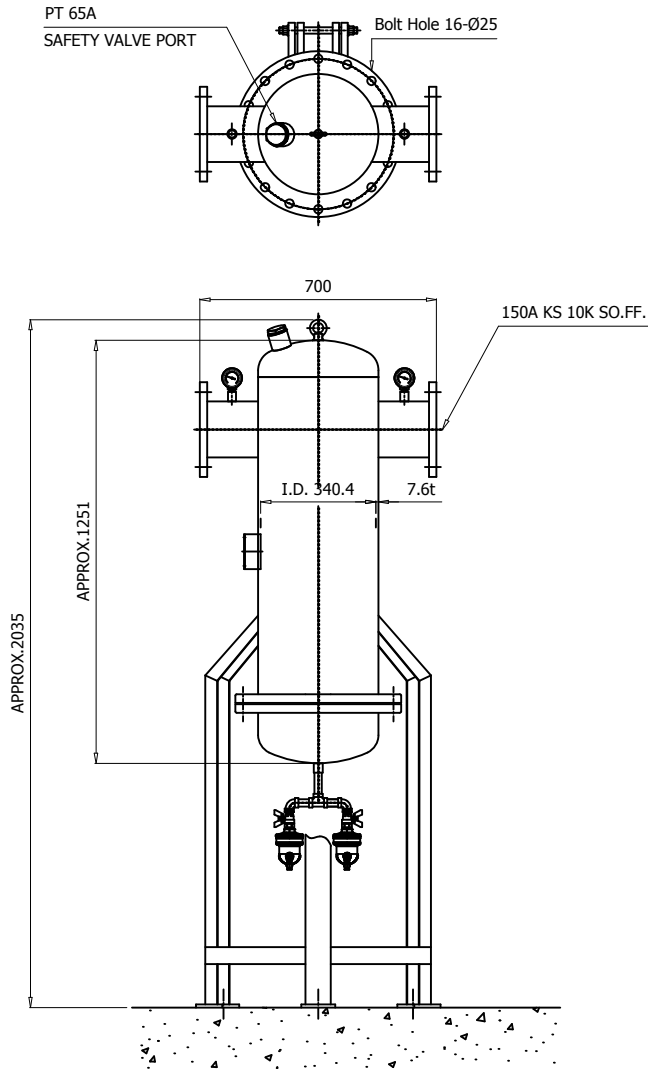


| | | | | | | | |
|---|--------------------------|-------------------|-----------------|--------------------|---------------|-------------|-------------|
|  | Air Filter | | Rev. | Date | Prepared By | Checked By | Approved By |
| | | | 1 | 2019.01.15 | LEE.S.M. | JO.S.J. | KIM.H.W. |
| | Particulate Type | | 2 | 2020.09.23 | WOO.I.H. | JO.S.J. | KIM.H.W. |
| | | | 3 | | | | |
| 4 | | | | | | | |
| Project Name | | - | | Model Name | | HYF-40-150A | |
| SPECIFICATION | | | | | | | |
| 2 | Element Type | Particulate | | Inlet Flow Rate | 112 | m3/min | |
| 3 | Element Quantity | 8 | EA | Inlet Pressure | 7 | barg | |
| 4 | Element Filtration | 40 | micron | Inlet Temp. | 38 | °C | |
| 5 | | - | ppm | Outlet Flow Rate | 112 | m3/min | |
| 6 | Element Design Temp. | 65 | °C | Outlet Pressure | 6.8 | barg | |
| 7 | Flow Direction | Outside to Inside | | Outlet Temp. | 38 | °C | |
| 8 | Design Code | KS B 6750-3 | | Pressure Drop | 0.2 | bar | |
| 9 | Auto Drain | HAD-30 | | Design Pressure | 9.7 | barg | |
| 10 | | | | Design Temperature | 100 | °C | |
| CONSTRUCTION | | | | | | | |
| 12 | Inlet Connection | 150A | KS 10K SO.FF. | Dimension (W x L) | 700 X 1251 | mm | |
| 13 | Outlet Connection | 150A | KS 10K SO.FF. | Weight | 180 | kg | |
| 14 | Drain Connection | 15A | PT Female Screw | Color (Munsell) | 5.7PB 4.1/9.9 | | |
| MATERIALS | | | | | | | |
| 16 | Head | SS275 | | | | | |
| 17 | Bowl | SPP | | | | | |
| 18 | Flange | SS275 | | | | | |
| 19 | Gasket | Non-Asbestos | | | | | |
| 20 | Element | Polyethylene | | | | | |
| 21 | Bolt / Nut | SS400 | | | | | |
| STANDRAD FEATURES AND CONTROL | | | | | | | |
| 23 | Pressure Gauge | YES | | | | | |
| 24 | Differential Indicator | NO | | | | | |
| 25 | Differential Transmitter | NO | | | | | |
| 26 | Auto Drain | YES | | | | | |
| NOTES | | | | | | | |
| 28 | | | | | | | |
| 29 | | | | | | | |
| 30 | | | | | | | |
| 31 | | | | | | | |
| 32 | | | | | | | |
| 33 | | | | | | | |
| 34 | | | | | | | |
| 35 | | | | | | | |
| 36 | | | | | | | |
| 37 | | | | | | | |
| 38 | | | | | | | |
| 39 | | | | | | | |
| 40 | | | | | | | |
| 41 | | | | | | | |
| 42 | | | | | | | |
| 43 | | | | | | | |
| 44 | | | | | | | |
| 45 | | | | | | | |

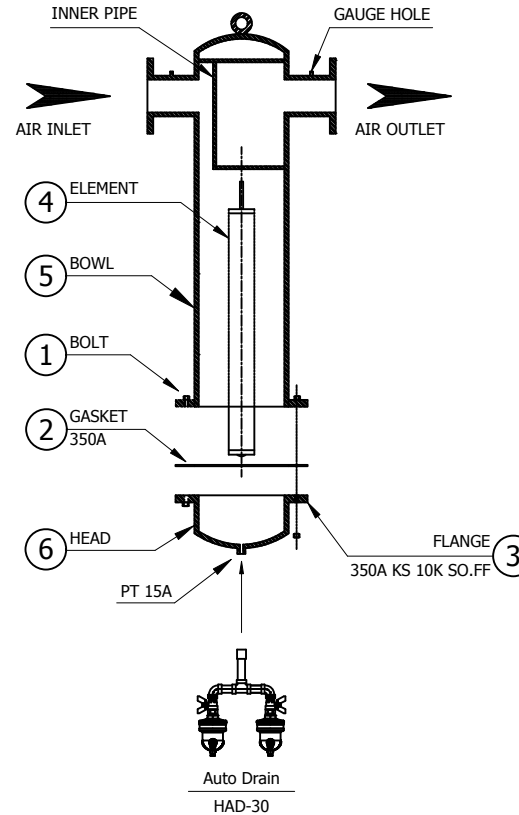
DIMENSION



NOTE


1. THE LEG IS OPTIONAL.
2. THE DIFFERENTIAL PRESSURE GAUGE IS OPTIONAL.


ASSEMBLY



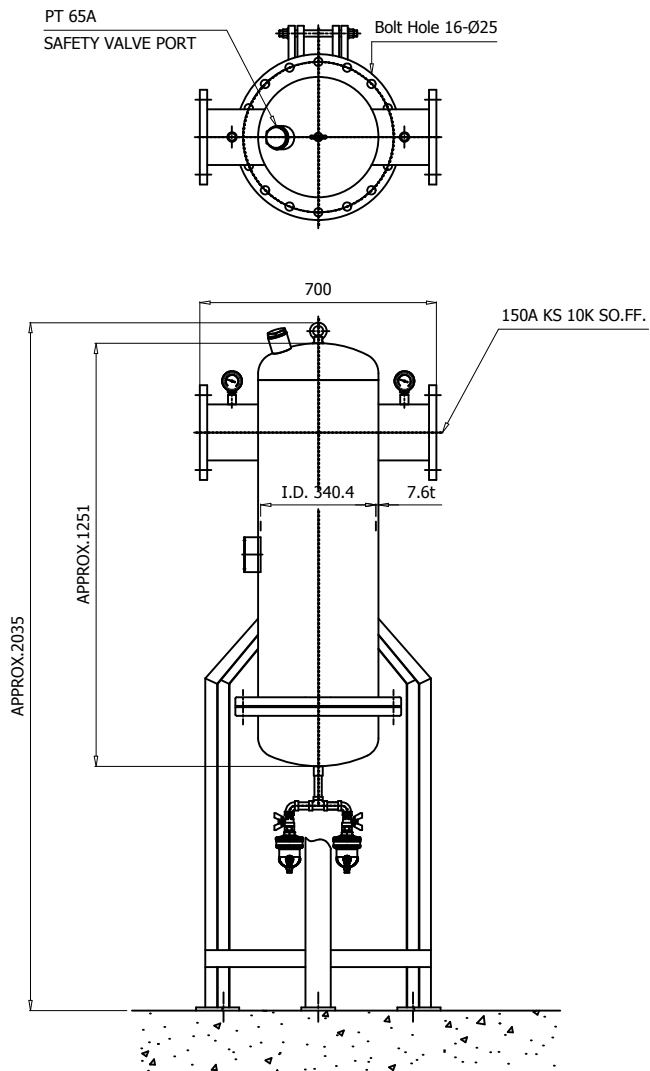
| | |
|-------------------------|-------------------------|
| MODEL | HYF-40-150A |
| CAPACITY | 112 m ³ /min |
| INLET AIR TEMPERATURE | MAX. 65 °C |
| MAX. INLET AIR PRESSURE | 9.7 barg |
| ELEMENT TYPE | PARTICULATE |
| FILTRATION | 40 MICRON |
| IN/OUT CONNECTION | 150A FLANGE |
| FLOW DIRECTION | OUTSIDE TO INSIDE |

| NO. | PART NAME | DESCRIPTION | QTY |
|-----|-----------|--------------|-----|
| 6 | HEAD | SS275 | 2 |
| 5 | BOWL | SPP | 1 |
| 4 | ELEMENT | POLTETHYLENE | 8 |
| 3 | FLANGE | SS275 | 2 |
| 2 | GASKET | NON-ASBESTOS | 1 |
| 1 | BOLT | M22 X 75L | 16 |

| | | | | | | | | | |
|--|------------|---------------------|-----|-----|------|------|------|--|--------|
| △ | | | | | | | | | |
| △ | | | | | | | | | |
| △ | | | | | | | | | |
| △ | | | | | | | | | |
| △ | 2020.09.24 | ISSUED FOR PROPOSAL | | | | | | | |
| REV. NO. | DATE | DESCRIPTION | DWG | CHK | APPD | APPD | APPD | | |
| PROJECT | | | | | | | | | |
| MANUFACTURER | | | | | | | | | |
|  GSA Global Standards and Practices | | | | | | | | | |
| TITLE | | | | | | | | | |
| HYF-40-150A OUTLINE | | | | | | | | | |
| ITEM NO. | HYF-150A | DWG NO. | | | | | | | |
| SCALE | NONE | GSA-HYF-150A-01 | | | | | | | |
| | | | | | | | | | REV. △ |

| | | | | | | | |
|---|--------------------------|-------------------|-----------------|--------------------|---------------|------------|-------------|
|  | Air Filter | | Rev. | Date | Prepared By | Checked By | Approved By |
| | | | 1 | 2019.01.15 | LEE.S.M. | JO.S.J. | KIM.H.W. |
| | Particulate Type | | 2 | 2020.09.23 | WOO.I.H. | JO.S.J. | KIM.H.W. |
| | | | 3 | | | | |
| 4 | | | | | | | |
| Project Name | | | - | | Model Name | | HYF-5-150A |
| SPECIFICATION | | | | | | | |
| 2 | Element Type | Particulate | | Inlet Flow Rate | 112 | m3/min | |
| 3 | Element Quantity | 8 | EA | Inlet Pressure | 7 | barg | |
| 4 | Element Filtration | 5 | micron | Inlet Temp. | 38 | °C | |
| 5 | | - | ppm | Outlet Flow Rate | 112 | m3/min | |
| 6 | Element Design Temp. | 65 | °C | Outlet Pressure | 6.8 | barg | |
| 7 | Flow Direction | Outside to Inside | | Outlet Temp. | 38 | °C | |
| 8 | Design Code | KS B 6750-3 | | Pressure Drop | 0.2 | bar | |
| 9 | Auto Drain | HAD-30 | | Design Pressure | 9.7 | barg | |
| 10 | | | | Design Temperature | 100 | °C | |
| CONSTRUCTION | | | | | | | |
| 12 | Inlet Connection | 150A | KS 10K SO.FF. | Dimension (W x L) | 700 X 1251 | mm | |
| 13 | Outlet Connection | 150A | KS 10K SO.FF. | Weight | 180 | kg | |
| 14 | Drain Connection | 15A | PT Female Screw | Color (Munsell) | 5.7PB 4.1/9.9 | | |
| MATERIALS | | | | | | | |
| 16 | Head | SS275 | | | | | |
| 17 | Bowl | SPP | | | | | |
| 18 | Flange | SS275 | | | | | |
| 19 | Gasket | Non-Asbestos | | | | | |
| 20 | Element | Polyethylene | | | | | |
| 21 | Bolt / Nut | SS400 | | | | | |
| STANDRAD FEATURES AND CONTROL | | | | | | | |
| 23 | Pressure Gauge | YES | | | | | |
| 24 | Differential Indicator | NO | | | | | |
| 25 | Differential Transmitter | NO | | | | | |
| 26 | Auto Drain | YES | | | | | |
| NOTES | | | | | | | |
| 28 | | | | | | | |
| 29 | | | | | | | |
| 30 | | | | | | | |
| 31 | | | | | | | |
| 32 | | | | | | | |
| 33 | | | | | | | |
| 34 | | | | | | | |
| 35 | | | | | | | |
| 36 | | | | | | | |
| 37 | | | | | | | |
| 38 | | | | | | | |
| 39 | | | | | | | |
| 40 | | | | | | | |
| 41 | | | | | | | |
| 42 | | | | | | | |
| 43 | | | | | | | |
| 44 | | | | | | | |
| 45 | | | | | | | |

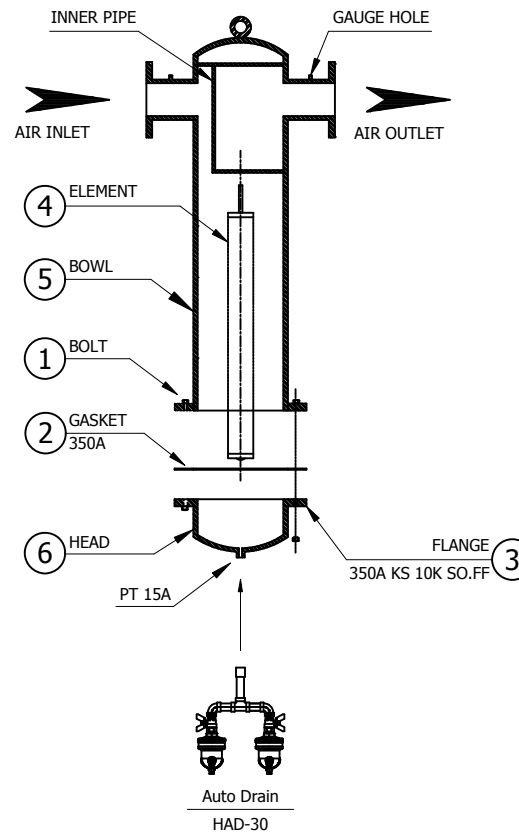
DIMENSION



NOTE


1. THE LEG IS OPTIONAL.
2. THE DIFFERENTIAL PRESSURE GAUGE IS OPTIONAL.


ASSEMBLY



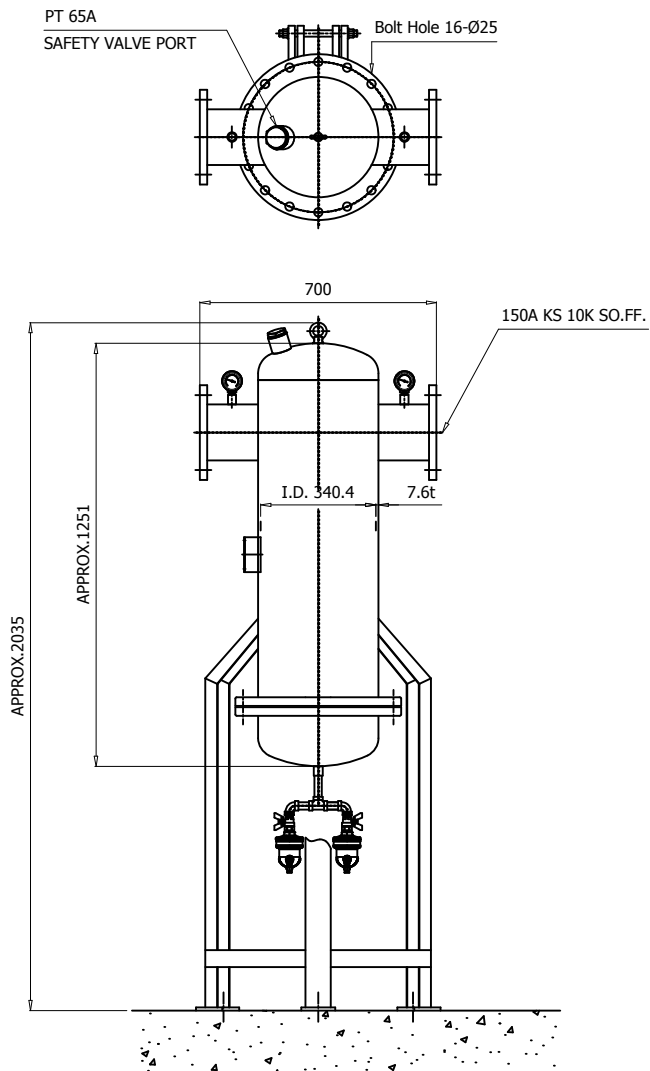
| | |
|-------------------------|-------------------------|
| MODEL | HYF-5-150A |
| CAPACITY | 112 m ³ /min |
| INLET AIR TEMPERATURE | MAX. 65 °C |
| MAX. INLET AIR PRESSURE | 9.7 barg |
| ELEMENT TYPE | PARTICULATE |
| FILTRATION | 5 MICRON |
| IN/OUT CONNECTION | 150A FLANGE |
| FLOW DIRECTION | OUTSIDE TO INSIDE |

| NO. | PART NAME | DESCRIPTION | QTY |
|-----|-----------|--------------|-----|
| 6 | HEAD | SS275 | 2 |
| 5 | BOWL | SPP | 1 |
| 4 | ELEMENT | POLTETHYLENE | 8 |
| 3 | FLANGE | SS275 | 2 |
| 2 | GASKET | NON-ASBESTOS | 1 |
| 1 | BOLT | M22 X 75L | 16 |

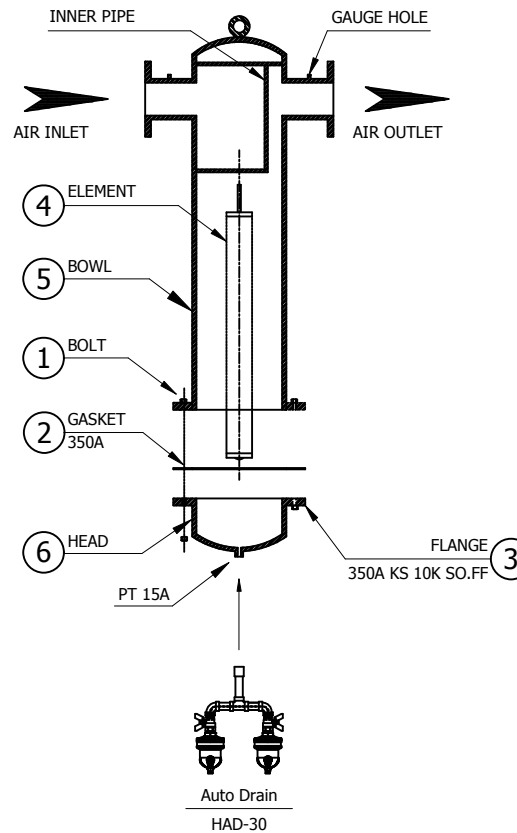
| | | | | | | | | | | |
|---|------------|---------------------|-----------------|-----|------|------|------|--|--|------|
| △ | | | | | | | | | | |
| △ | | | | | | | | | | |
| △ | | | | | | | | | | |
| △ | | | | | | | | | | |
| △ | 2020.09.24 | ISSUED FOR PROPOSAL | | | | | | | | |
| REV. NO. | DATE | DESCRIPTION | DWG | CHK | APPD | APPD | APPD | | | |
| PROJECT | | | | | | | | | | |
| MANUFACTURER | | | | | | | | | | |
|  GSA Global Standards Part & Gas | | | | | | | | | | |
| TITLE | | | | | | | | | | |
| HYF-5-150A OUTLINE | | | | | | | | | | |
| ITEM NO. | HYF-150A | DWG NO. | GSA-HYF-150A-02 | | | | | | | REV. |
| SCALE | NONE | | | | | | | | | △ |

| | | | | | | | |
|---|--------------------------|-------------------|-----------------|--------------------|---------------|------------|-------------|
|  | Air Filter | | Rev. | Date | Prepared By | Checked By | Approved By |
| | | | 1 | 2019.01.15 | LEE.S.M. | JO.S.J. | KIM.H.W. |
| | Coalescer Type | | 2 | 2020.09.23 | WOO.I.H. | JO.S.J. | KIM.H.W. |
| | | | 3 | | | | |
| 4 | | | | | | | |
| Project Name | | | - | | Model Name | | HYF-1-150A |
| SPECIFICATION | | | | | | | |
| 2 | Element Type | Coalescer | | Inlet Flow Rate | 112 | m3/min | |
| 3 | Element Quantity | 8 | EA | Inlet Pressure | 7 | barg | |
| 4 | Element Filtration | 1 | micron | Inlet Temp. | 38 | °C | |
| 5 | | 1 | ppm | Outlet Flow Rate | 112 | m3/min | |
| 6 | Element Design Temp. | 54 | °C | Outlet Pressure | 6.8 | barg | |
| 7 | Flow Direction | Inside to Outside | | Outlet Temp. | 38 | °C | |
| 8 | Design Code | KS B 6750-3 | | Pressure Drop | 0.2 | bar | |
| 9 | Auto Drain | HAD-30 | | Design Pressure | 9.7 | barg | |
| 10 | | | | Design Temperature | 100 | °C | |
| CONSTRUCTION | | | | | | | |
| 12 | Inlet Connection | 150A | KS 10K SO.FF. | Dimension (W x L) | 700 X 1251 | mm | |
| 13 | Outlet Connection | 150A | KS 10K SO.FF. | Weight | 180 | kg | |
| 14 | Drain Connection | 15A | PT Female Screw | Color (Munsell) | 5.7PB 4.1/9.9 | | |
| MATERIALS | | | | | | | |
| 16 | Head | SS275 | | | | | |
| 17 | Bowl | SPP | | | | | |
| 18 | Flange | SS275 | | | | | |
| 19 | Gasket | Non-Asbestos | | | | | |
| 20 | Element | Borosilicate | | | | | |
| 21 | Bolt / Nut | SS400 | | | | | |
| STANDRAD FEATURES AND CONTROL | | | | | | | |
| 23 | Pressure Gauge | YES | | | | | |
| 24 | Differential Indicator | NO | | | | | |
| 25 | Differential Transmitter | NO | | | | | |
| 26 | Auto Drain | YES | | | | | |
| NOTES | | | | | | | |
| 28 | | | | | | | |
| 29 | | | | | | | |
| 30 | | | | | | | |
| 31 | | | | | | | |
| 32 | | | | | | | |
| 33 | | | | | | | |
| 34 | | | | | | | |
| 35 | | | | | | | |
| 36 | | | | | | | |
| 37 | | | | | | | |
| 38 | | | | | | | |
| 39 | | | | | | | |
| 40 | | | | | | | |
| 41 | | | | | | | |
| 42 | | | | | | | |
| 43 | | | | | | | |
| 44 | | | | | | | |
| 45 | | | | | | | |

DIMENSION



ASSEMBLY





| | |
|-------------------------|-------------------|
| MODEL | HYF-1-150A |
| CAPACITY | 112 m³/min |
| INLET AIR TEMPERATURE | MAX. 54 °C |
| MAX. INLET AIR PRESSURE | 9.7 barg |
| ELEMENT TYPE | COALESCER |
| FILTRATION | 1 MICRON |
| | 1 PPM |
| IN/OUT CONNECTION | 150A FLANGE |
| FLOW DIRECTION | INSIDE TO OUTSIDE |

| NO. | PART NAME | DESCRIPTION | QTY |
|-----|-----------|--------------|-----|
| 6 | HEAD | SS275 | 2 |
| 5 | BOWL | SPP | 1 |
| 4 | ELEMENT | BOROSILICATE | 8 |
| 3 | FLANGE | SS275 | 2 |
| 2 | GASKET | NON-ASBESTOS | 1 |
| 1 | BOLT | M22 X 75L | 16 |

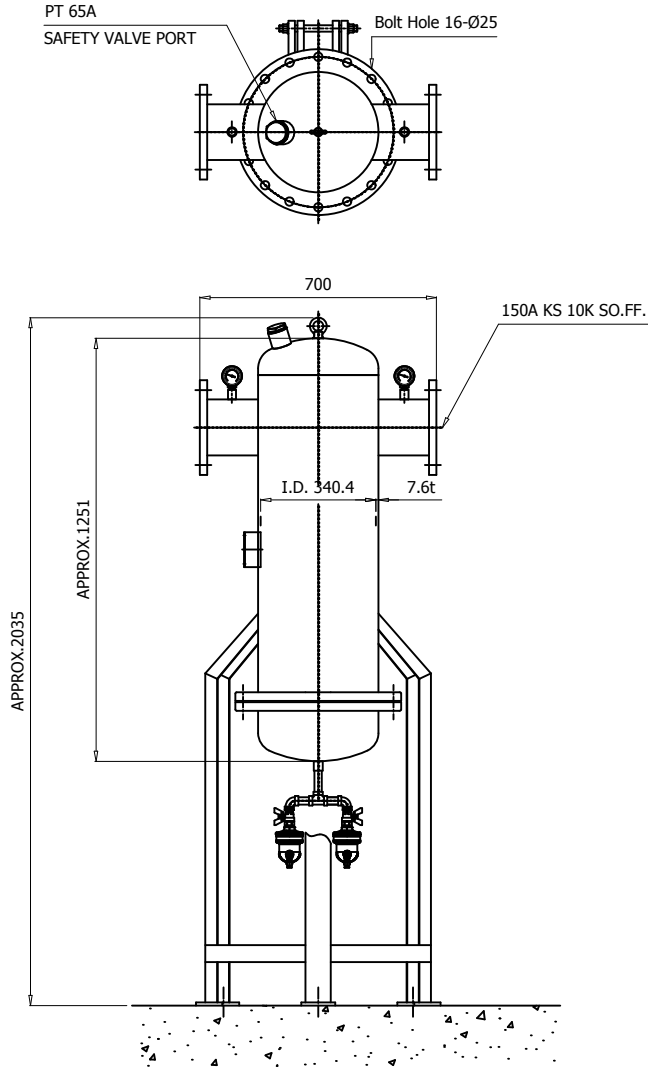
NOTE

1. THE LEG IS OPTIONAL.
2. THE DIFFERENTIAL PRESSURE GAUGE IS OPTIONAL.

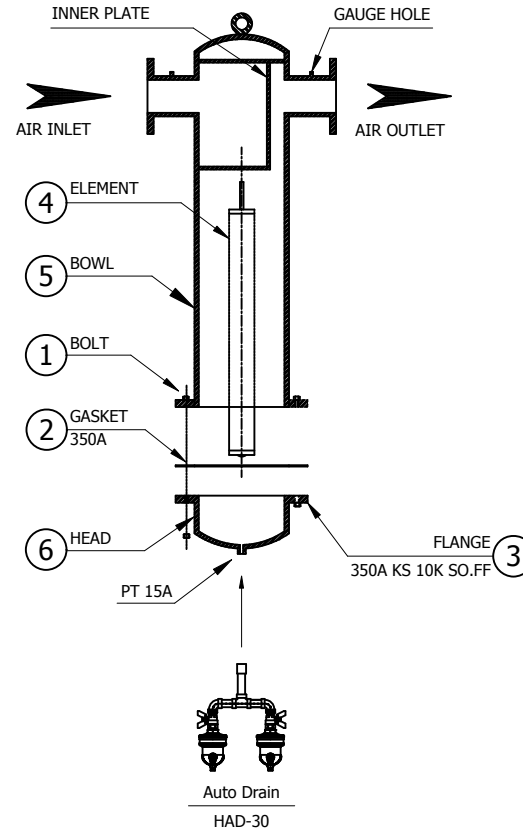
| | | | | | | | | | | |
|--|------------|---------------------|-----------------|-----|------|------|------|--|---|------|
| △ | | | | | | | | | | |
| △ | | | | | | | | | | |
| △ | | | | | | | | | | |
| △ | | | | | | | | | | |
| △ | 2020.09.24 | ISSUED FOR PROPOSAL | | | | | | | | |
| REV. NO. | DATE | DESCRIPTION | DWG | CHK | APPD | APPD | APPD | | | |
| PROJECT | | | | | | | | | | |
| MANUFACTURER | | | | | | | | | | |
|  GSA Global Standards for Air & Gas | | | | | | | | | | |
| TITLE | | | | | | | | | | |
| HYF-1-150A OUTLINE | | | | | | | | | | |
| ITEM NO. | HYF-150A | DWG NO. | GSA-HYF-150A-03 | | | | | | | REV. |
| SCALE | NONE | | | | | | | | △ | |

| | | | | | | | |
|---|--------------------------|-------------------|-----------------|--------------------|---------------|------------|--------------|
|  | Air Filter | | Rev. | Date | Prepared By | Checked By | Approved By |
| | | | 1 | 2019.01.15 | LEE.S.M. | JO.S.J. | KIM.H.W. |
| | Coalescer Type | | 2 | 2020.09.23 | WOO.I.H. | JO.S.J. | KIM.H.W. |
| | | | 3 | | | | |
| 4 | | | | | | | |
| Project Name | | | - | | Model Name | | HYF-0.1-150A |
| SPECIFICATION | | | | | | | |
| 2 | Element Type | Coalescer | | Inlet Flow Rate | 112 | m3/min | |
| 3 | Element Quantity | 8 | EA | Inlet Pressure | 7 | barg | |
| 4 | Element Filtration | 1 | micron | Inlet Temp. | 38 | °C | |
| 5 | | 0.1 | ppm | Outlet Flow Rate | 112 | m3/min | |
| 6 | Element Design Temp. | 54 | °C | Outlet Pressure | 6.8 | barg | |
| 7 | Flow Direction | Inside to Outside | | Outlet Temp. | 38 | °C | |
| 8 | Design Code | KS B 6750-3 | | Pressure Drop | 0.2 | bar | |
| 9 | Auto Drain | HAD-30 | | Design Pressure | 9.7 | barg | |
| 10 | | | | Design Temperature | 100 | °C | |
| CONSTRUCTION | | | | | | | |
| 12 | Inlet Connection | 150A | KS 10K SO.FF. | Dimension (W x L) | 700 X 1251 | mm | |
| 13 | Outlet Connection | 150A | KS 10K SO.FF. | Weight | 180 | kg | |
| 14 | Drain Connection | 15A | PT Female Screw | Color (Munsell) | 5.7PB 4.1/9.9 | | |
| MATERIALS | | | | | | | |
| 16 | Head | SS275 | | | | | |
| 17 | Bowl | SPP | | | | | |
| 18 | Flange | SS275 | | | | | |
| 19 | Gasket | Non-Asbestos | | | | | |
| 20 | Element | Borosilicate | | | | | |
| 21 | Bolt / Nut | SS400 | | | | | |
| STANDRAD FEATURES AND CONTROL | | | | | | | |
| 23 | Pressure Gauge | YES | | | | | |
| 24 | Differential Indicator | NO | | | | | |
| 25 | Differential Transmitter | NO | | | | | |
| 26 | Auto Drain | YES | | | | | |
| NOTES | | | | | | | |
| 28 | | | | | | | |
| 29 | | | | | | | |
| 30 | | | | | | | |
| 31 | | | | | | | |
| 32 | | | | | | | |
| 33 | | | | | | | |
| 34 | | | | | | | |
| 35 | | | | | | | |
| 36 | | | | | | | |
| 37 | | | | | | | |
| 38 | | | | | | | |
| 39 | | | | | | | |
| 40 | | | | | | | |
| 41 | | | | | | | |
| 42 | | | | | | | |
| 43 | | | | | | | |
| 44 | | | | | | | |
| 45 | | | | | | | |

DIMENSION



ASSEMBLY




| | |
|-------------------------|-------------------------|
| MODEL | HYF-0.1-150A |
| CAPACITY | 112 m ³ /min |
| INLET AIR TEMPERATURE | MAX. 54 °C |
| MAX. INLET AIR PRESSURE | 9.7 barg |
| ELEMENT TYPE | COALESCER |
| FILTRATION | 1 MICRON |
| | 0.1 PPM |
| IN/OUT CONNECTION | 150A FLANGE |
| FLOW DIRECTION | INSIDE TO OUTSIDE |

| NO. | PART NAME | DESCRIPTION | QTY |
|-----|-----------|--------------|-----|
| 6 | HEAD | SS275 | 2 |
| 5 | BOWL | SPP | 1 |
| 4 | ELEMENT | BOROSILICATE | 8 |
| 3 | FLANGE | SS275 | 2 |
| 2 | GASKET | NON-ASBESTOS | 1 |
| 1 | BOLT | M22 X 75L | 16 |

NOTE

1. THE LEG IS OPTIONAL.
2. THE DIFFERENTIAL PRESSURE GAUGE IS OPTIONAL.

| | | | | | | | | | | |
|--|------------|---------------------|-----------------|-----|------|------|------|--|---|------|
| △ | | | | | | | | | | |
| △ | | | | | | | | | | |
| △ | | | | | | | | | | |
| △ | | | | | | | | | | |
| △ | 2020.09.24 | ISSUED FOR PROPOSAL | | | | | | | | |
| REV. NO. | DATE | DESCRIPTION | DWG | CHK | APPD | APPD | APPD | | | |
| PROJECT | | | | | | | | | | |
| MANUFACTURER | | | | | | | | | | |
|  GSA Global Standards Air & Gas | | | | | | | | | | |
| TITLE | | | | | | | | | | |
| HYF-0.1-150A OUTLINE | | | | | | | | | | |
| ITEM NO. | HYF-150A | DWG NO. | GSA-HYF-150A-04 | | | | | | | REV. |
| SCALE | NONE | | | | | | | | △ | |



Air Filter

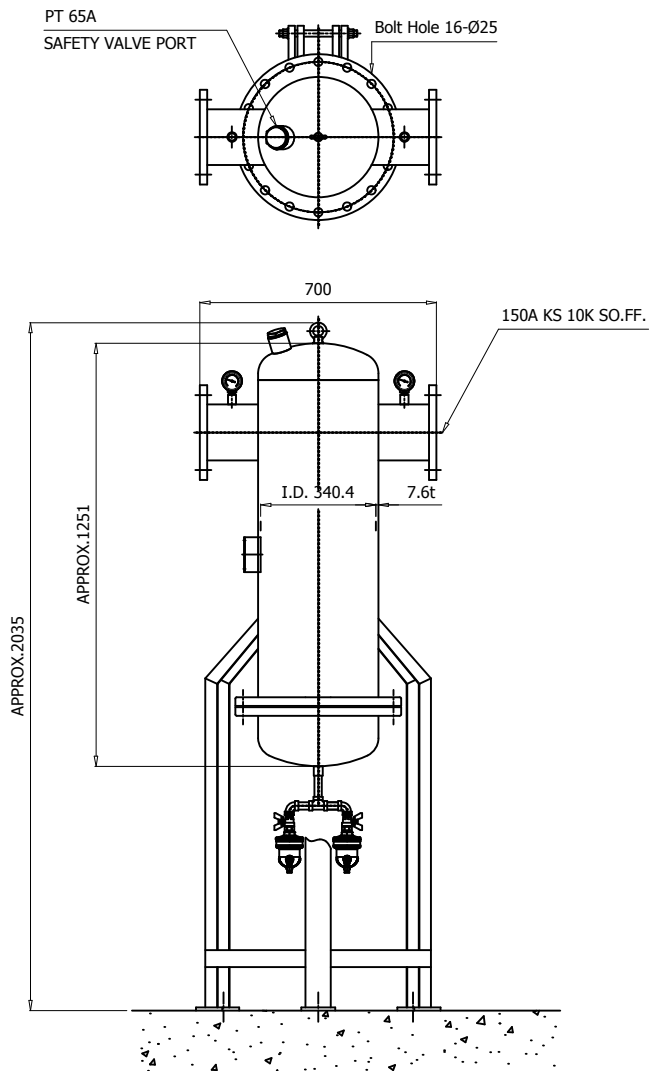
Coalescer Type

| Rev. | Date | Prepared By | Checked By | Approved By |
|------|------------|-------------|------------|-------------|
| 1 | 2019.01.15 | LEE.S.M. | JO.S.J. | KIM.H.W. |
| 2 | 2020.09.23 | WOO.I.H. | JO.S.J. | KIM.H.W. |
| 3 | | | | |
| 4 | | | | |

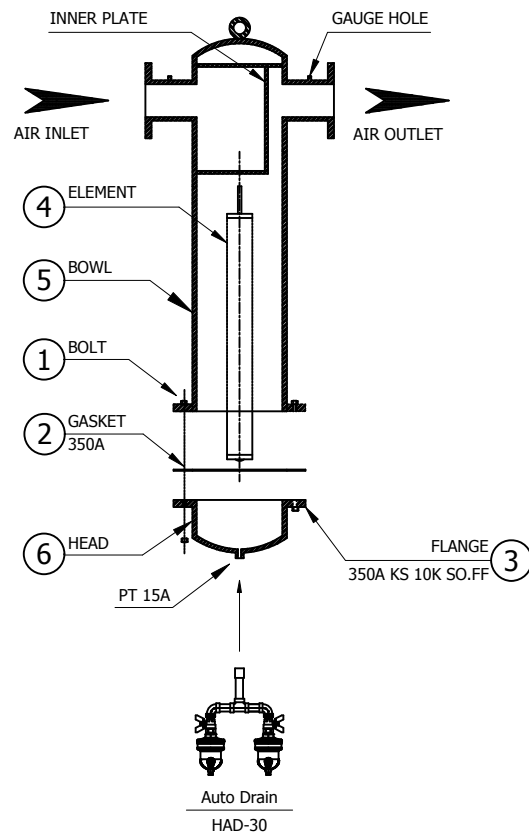
| | | | |
|--------------|---|------------|---------------|
| Project Name | - | Model Name | HYF-0.01-150A |
|--------------|---|------------|---------------|

| 1 SPECIFICATION | | | | | |
|----------------------------------|--------------------------|---------------------|--------------------|---------------|--------|
| 2 | Element Type | Coalescer | Inlet Flow Rate | 112 | m3/min |
| 3 | Element Quantity | 8 EA | Inlet Pressure | 7 | barg |
| 4 | Element Filtration | 1 micron | Inlet Temp. | 38 | °C |
| 5 | | 0.01 ppm | Outlet Flow Rate | 112 | m3/min |
| 6 | Element Design Temp. | 54 °C | Outlet Pressure | 6.8 | barg |
| 7 | Flow Direction | Inside to Outside | Outlet Temp. | 38 | °C |
| 8 | Design Code | KS B 6750-3 | Pressure Drop | 0.2 | bar |
| 9 | Auto Drain | HAD-30 | Design Pressure | 9.7 | barg |
| 10 | | | Design Temperature | 100 | °C |
| 11 CONSTRUCTION | | | | | |
| 12 | Inlet Connection | 150A KS 10K SO.FF. | Dimension (W x L) | 700 X 1251 | mm |
| 13 | Outlet Connection | 150A KS 10K SO.FF. | Weight | 180 | kg |
| 14 | Drain Connection | 15A PT Female Screw | Color (Munsell) | 5.7PB 4.1/9.9 | |
| 15 MATERIALS | | | | | |
| 16 | Head | SS275 | | | |
| 17 | Bowl | SPP | | | |
| 18 | Flange | SS275 | | | |
| 19 | Gasket | Non-Asbestos | | | |
| 20 | Element | Borosilicate | | | |
| 21 | Bolt / Nut | SS400 | | | |
| 22 STANDRAD FEATURES AND CONTROL | | | | | |
| 23 | Pressure Gauge | YES | | | |
| 24 | Differential Indicator | NO | | | |
| 25 | Differential Transmitter | NO | | | |
| 26 | Auto Drain | YES | | | |
| 27 NOTES | | | | | |
| 28 | | | | | |
| 29 | | | | | |
| 30 | | | | | |
| 31 | | | | | |
| 32 | | | | | |
| 33 | | | | | |
| 34 | | | | | |
| 35 | | | | | |
| 36 | | | | | |
| 37 | | | | | |
| 38 | | | | | |
| 39 | | | | | |
| 40 | | | | | |
| 41 | | | | | |
| 42 | | | | | |
| 43 | | | | | |
| 44 | | | | | |
| 45 | | | | | |

DIMENSION



ASSEMBLY




| | |
|-------------------------|-------------------------|
| MODEL | HYF-0.01-150A |
| CAPACITY | 112 m ³ /min |
| INLET AIR TEMPERATURE | MAX. 54 °C |
| MAX. INLET AIR PRESSURE | 9.7 barg |
| ELEMENT TYPE | COALESCER |
| FILTRATION | 1 MICRON 0.01 PPM |
| IN/OUT CONNECTION | 150A FLANGE |
| FLOW DIRECTION | INSIDE TO OUTSIDE |

| NO. | PART NAME | DESCRIPTION | QTY |
|-----|-----------|--------------|-----|
| 6 | HEAD | SS275 | 2 |
| 5 | BOWL | SPP | 1 |
| 4 | ELEMENT | BOROSILICATE | 8 |
| 3 | FLANGE | SS275 | 2 |
| 2 | GASKET | NON-ASBESTOS | 1 |
| 1 | BOLT | M22 X 75L | 16 |

NOTE

1. THE LEG IS OPTIONAL.
2. THE DIFFERENTIAL PRESSURE GAUGE IS OPTIONAL.

| | | | | | | | | | | |
|--|------------|---------------------|-----------------|-----|------|------|------|--|---|------|
| △ | | | | | | | | | | |
| △ | | | | | | | | | | |
| △ | | | | | | | | | | |
| △ | | | | | | | | | | |
| △ | | | | | | | | | | |
| △ | 2020.09.24 | ISSUED FOR PROPOSAL | | | | | | | | |
| REV. NO. | DATE | DESCRIPTION | DWG | CHK | APPD | APPD | APPD | | | |
| PROJECT | | | | | | | | | | |
| MANUFACTURER | | | | | | | | | | |
|  GSA Global Standards Air & Gas | | | | | | | | | | |
| TITLE | | | | | | | | | | |
| HYF-0.01-150A OUTLINE | | | | | | | | | | |
| ITEM NO. | HYF-150A | DWG NO. | GSA-HYF-150A-05 | | | | | | | REV. |
| SCALE | NONE | | | | | | | | △ | |



Air Filter

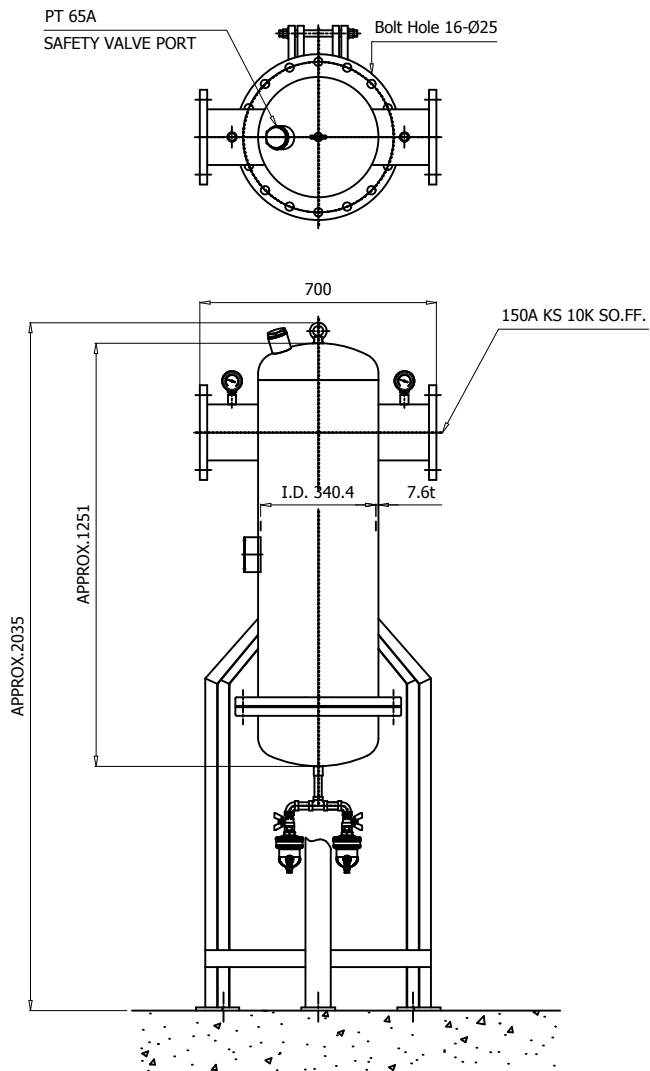
Coalescer Type

| Rev. | Date | Prepared By | Checked By | Approved By |
|------|------------|-------------|------------|-------------|
| 1 | 2019.01.15 | LEE.S.M. | JO.S.J. | KIM.H.W. |
| 2 | 2020.09.23 | WOO.I.H. | JO.S.J. | KIM.H.W. |
| 3 | | | | |
| 4 | | | | |

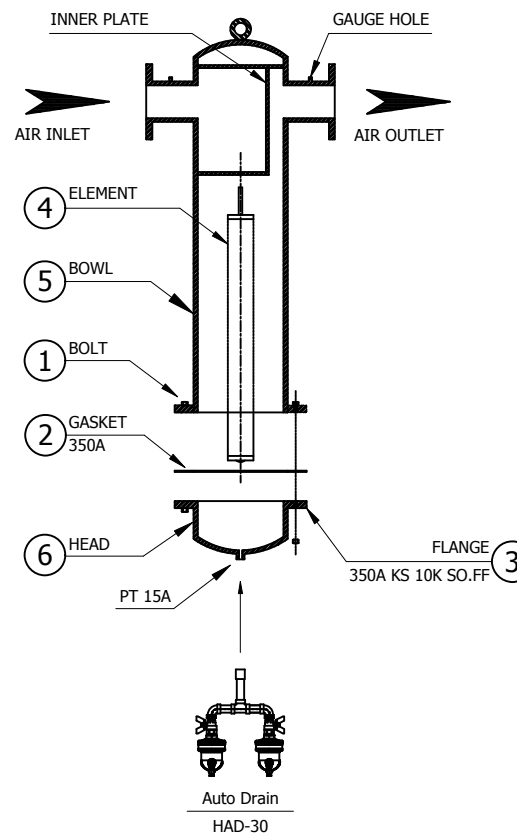
| | | | |
|--------------|---|------------|----------------|
| Project Name | - | Model Name | HYF-0.01F-150A |
|--------------|---|------------|----------------|

| 1 SPECIFICATION | | | | | |
|----------------------------------|--------------------------|---------------------|--------------------|---------------|--------|
| 2 | Element Type | Coalescer | Inlet Flow Rate | 112 | m3/min |
| 3 | Element Quantity | 8 EA | Inlet Pressure | 7 | barg |
| 4 | Element Filtration | 1 micron | Inlet Temp. | 38 | °C |
| 5 | | 0.01 ppm | Outlet Flow Rate | 112 | m3/min |
| 6 | Element Design Temp. | 54 °C | Outlet Pressure | 6.8 | barg |
| 7 | Flow Direction | Inside to Outside | Outlet Temp. | 38 | °C |
| 8 | Design Code | KS B 6750-3 | Pressure Drop | 0.2 | bar |
| 9 | Auto Drain | HAD-30 | Design Pressure | 9.7 | barg |
| 10 | | | Design Temperature | 100 | °C |
| 11 CONSTRUCTION | | | | | |
| 12 | Inlet Connection | 150A KS 10K SO.FF. | Dimension (W x L) | 700 X 1251 | mm |
| 13 | Outlet Connection | 150A KS 10K SO.FF. | Weight | 180 | kg |
| 14 | Drain Connection | 15A PT Female Screw | Color (Munsell) | 5.7PB 4.1/9.9 | |
| 15 MATERIALS | | | | | |
| 16 | Head | SS275 | | | |
| 17 | Bowl | SPP | | | |
| 18 | Flange | SS275 | | | |
| 19 | Gasket | Non-Asbestos | | | |
| 20 | Element | Borosilicate | | | |
| 21 | Bolt / Nut | SS400 | | | |
| 22 STANDRAD FEATURES AND CONTROL | | | | | |
| 23 | Pressure Gauge | YES | | | |
| 24 | Differential Indicator | NO | | | |
| 25 | Differential Transmitter | NO | | | |
| 26 | Auto Drain | YES | | | |
| 27 NOTES | | | | | |
| 28 | - Added Carbon Layer | | | | |
| 29 | | | | | |
| 30 | | | | | |
| 31 | | | | | |
| 32 | | | | | |
| 33 | | | | | |
| 34 | | | | | |
| 35 | | | | | |
| 36 | | | | | |
| 37 | | | | | |
| 38 | | | | | |
| 39 | | | | | |
| 40 | | | | | |
| 41 | | | | | |
| 42 | | | | | |
| 43 | | | | | |
| 44 | | | | | |
| 45 | | | | | |

DIMENSION



ASSEMBLY





| | |
|-------------------------|------------------------------------|
| MODEL | HYF-0.01F-150A |
| CAPACITY | 112 m ³ /min |
| INLET AIR TEMPERATURE | MAX. 54 °C |
| MAX. INLET AIR PRESSURE | 9.7 barg |
| ELEMENT TYPE | COALESCER |
| FILTRATION | 1 MICRON 0.01 PPM(Carbon Layer) |
| IN/OUT CONNECTION | 150A FLANGE |
| FLOW DIRECTION | INSIDE TO OUTSIDE |

| NO. | PART NAME | DESCRIPTION | QTY |
|-----|-----------|--------------|-----|
| 6 | HEAD | SS275 | 2 |
| 5 | BOWL | SPP | 1 |
| 4 | ELEMENT | BOROSILICATE | 8 |
| 3 | FLANGE | SS275 | 2 |
| 2 | GASKET | NON-ASBESTOS | 1 |
| 1 | BOLT | M22 X 75L | 16 |

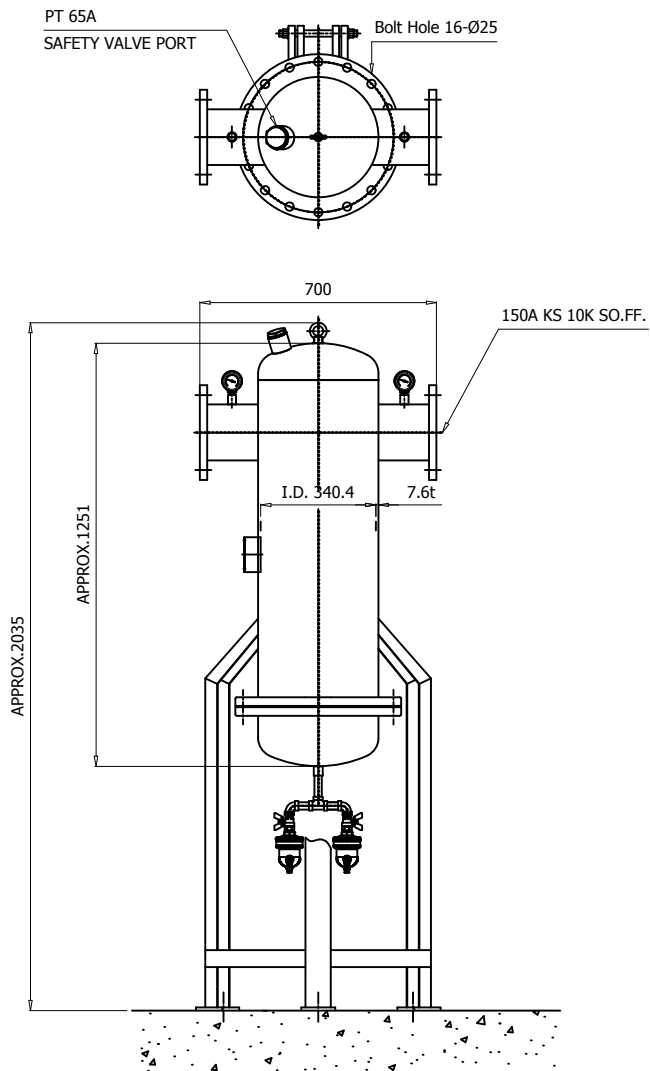
NOTE

1. THE LEG IS OPTIONAL.
2. THE DIFFERENTIAL PRESSURE GAUGE IS OPTIONAL.

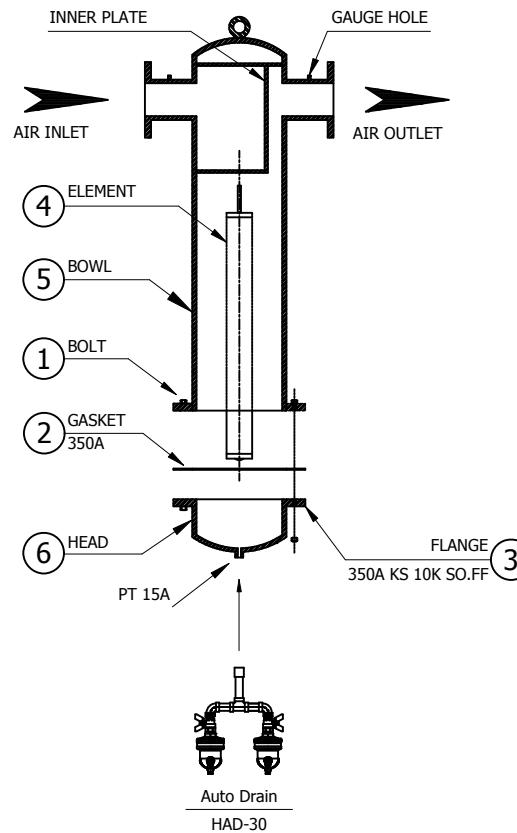
| | | | | | | | | | | |
|--|------------|---------------------|-----------------|-----|------|------|------|--|--|------|
| △ | | | | | | | | | | |
| △ | | | | | | | | | | |
| △ | | | | | | | | | | |
| △ | | | | | | | | | | |
| △ | 2020.09.24 | ISSUED FOR PROPOSAL | | | | | | | | |
| REV. NO. | DATE | DESCRIPTION | DWG | CHK | APPD | APPD | APPD | | | |
| PROJECT | | | | | | | | | | |
| MANUFACTURER | | | | | | | | | | |
|  GSA Global Standards Air & Gas | | | | | | | | | | |
| TITLE | | | | | | | | | | |
| HYF-0.01F-150A OUTLINE | | | | | | | | | | |
| ITEM NO. | HYF-150A | DWG NO. | GSA-HYF-150A-06 | | | | | | | REV. |
| SCALE | NONE | | | | | | | | | △ |

| | | | | | | | |
|---|--------------------------|-------------------|-----------------|--------------------|---------------|----------------|-------------|
|  | Air Filter | | Rev. | Date | Prepared By | Checked By | Approved By |
| | | | 1 | 2019.01.15 | LEE.S.M. | JO.S.J. | KIM.H.W. |
| | Adsorber Type | | 2 | 2020.09.23 | WOO.I.H. | JO.S.J. | KIM.H.W. |
| | | | 3 | | | | |
| 4 | | | | | | | |
| Project Name | | - | | Model Name | | HYF-0.003-150A | |
| SPECIFICATION | | | | | | | |
| 2 | Element Type | Adsorber | | Inlet Flow Rate | 112 | m3/min | |
| 3 | Element Quantity | 8 | EA | Inlet Pressure | 7 | barg | |
| 4 | Element Filtration | - | micron | Inlet Temp. | 38 | °C | |
| 5 | | 0.003 | ppm | Outlet Flow Rate | 112 | m3/min | |
| 6 | Element Design Temp. | 54 | °C | Outlet Pressure | 6.8 | barg | |
| 7 | Flow Direction | Inside to Outside | | Outlet Temp. | 38 | °C | |
| 8 | Design Code | KS B 6750-3 | | Pressure Drop | 0.2 | bar | |
| 9 | Auto Drain | HAD-30 | | Design Pressure | 9.7 | barg | |
| 10 | | | | Design Temperature | 100 | °C | |
| CONSTRUCTION | | | | | | | |
| 12 | Inlet Connection | 150A | KS 10K SO.FF. | Dimension (W x L) | 700 X 1251 | mm | |
| 13 | Outlet Connection | 150A | KS 10K SO.FF. | Weight | 180 | kg | |
| 14 | Drain Connection | 15A | PT Female Screw | Color (Munsell) | 5.7PB 4.1/9.9 | | |
| MATERIALS | | | | | | | |
| 16 | Head | SS275 | | | | | |
| 17 | Bowl | SPP | | | | | |
| 18 | Flange | SS275 | | | | | |
| 19 | Gasket | Non-Asbestos | | | | | |
| 20 | Element | Activated Carbon | | | | | |
| 21 | Bolt / Nut | SS400 | | | | | |
| STANDRAD FEATURES AND CONTROL | | | | | | | |
| 23 | Pressure Gauge | YES | | | | | |
| 24 | Differential Indicator | NO | | | | | |
| 25 | Differential Transmitter | NO | | | | | |
| 26 | Auto Drain | YES | | | | | |
| NOTES | | | | | | | |
| 28 | | | | | | | |
| 29 | | | | | | | |
| 30 | | | | | | | |
| 31 | | | | | | | |
| 32 | | | | | | | |
| 33 | | | | | | | |
| 34 | | | | | | | |
| 35 | | | | | | | |
| 36 | | | | | | | |
| 37 | | | | | | | |
| 38 | | | | | | | |
| 39 | | | | | | | |
| 40 | | | | | | | |
| 41 | | | | | | | |
| 42 | | | | | | | |
| 43 | | | | | | | |
| 44 | | | | | | | |
| 45 | | | | | | | |

DIMENSION



ASSEMBLY





| | | | |
|-------------------------|-------------------------|--|--|
| MODEL | HYF-0.003-150A | | |
| CAPACITY | 112 m ³ /min | | |
| INLET AIR TEMPERATURE | MAX. 54 °C | | |
| MAX. INLET AIR PRESSURE | 9.7 barg | | |
| ELEMENT TYPE | ADSORBER | | |
| FILTRATION | 0.003 PPM | | |
| IN/OUT CONNECTION | 150A FLANGE | | |
| FLOW DIRECTION | INSIDE TO OUTSIDE | | |

| NO. | PART NAME | DESCRIPTION | QTY |
|-----|-----------|------------------|-----|
| 6 | HEAD | SS275 | 2 |
| 5 | BOWL | SPP | 1 |
| 4 | ELEMENT | ACTIVATED CARBON | 8 |
| 3 | FLANGE | SS275 | 2 |
| 2 | GASKET | NON-ASBESTOS | 1 |
| 1 | BOLT | M22 X 75L | 16 |

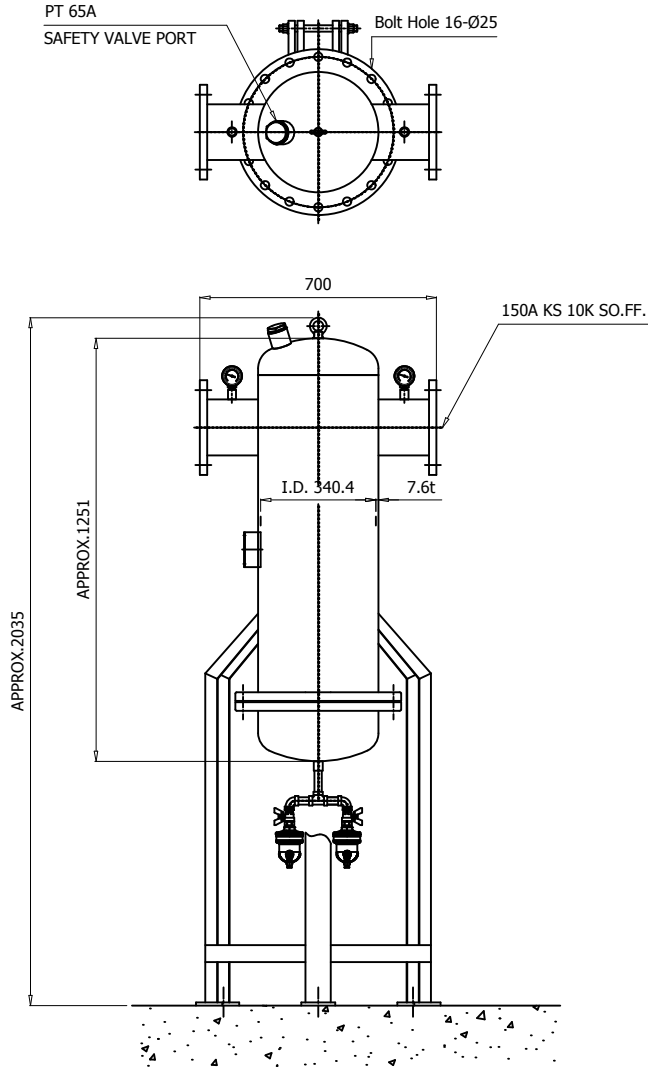
NOTE

1. THE LEG IS OPTIONAL.
2. THE DIFFERENTIAL PRESSURE GAUGE IS OPTIONAL.

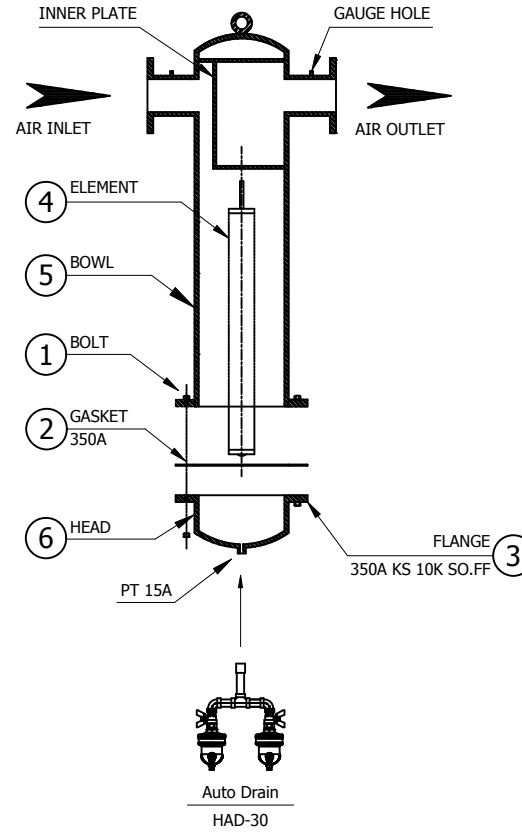
| | | | | | | | | | | |
|--|------------|---------------------|-----------------|-----|------|------|------|--|--|------|
| △ | | | | | | | | | | |
| △ | | | | | | | | | | |
| △ | | | | | | | | | | |
| △ | | | | | | | | | | |
| △ | 2020.09.24 | ISSUED FOR PROPOSAL | | | | | | | | |
| REV. NO. | DATE | DESCRIPTION | DWG | CHK | APPD | APPD | APPD | | | |
| PROJECT | | | | | | | | | | |
| MANUFACTURER | | | | | | | | | | |
|  GSA Global Standards Air & Gas | | | | | | | | | | |
| TITLE | | | | | | | | | | |
| HYF-0.003-150A OUTLINE | | | | | | | | | | |
| ITEM NO. | HYF-150A | DWG NO. | GSA-HYF-150A-07 | | | | | | | REV. |
| SCALE | NONE | | | | | | | | | △ |

| | | | | | | | |
|---|--------------------------|-------------------|-----------------|--------------------|---------------|-----------------------|-------------|
|  | Air Filter | | Rev. | Date | Prepared By | Checked By | Approved By |
| | | | 1 | 2019.01.15 | LEE.S.M. | JO.S.J. | KIM.H.W. |
| | Coalescer Type | | 2 | 2020.09.23 | WOO.I.H. | JO.S.J. | KIM.H.W. |
| | | | 3 | | | | |
| 4 | | | | | | | |
| Project Name | | - | | Model Name | | HYF-0.01(PARKER)-150A | |
| SPECIFICATION | | | | | | | |
| 2 | Element Type | Coalescer | | Inlet Flow Rate | 112 | m3/min | |
| 3 | Element Quantity | 8 | EA | Inlet Pressure | 7 | barg | |
| 4 | Element Filtration | 0.01 | micron | Inlet Temp. | 38 | °C | |
| 5 | | - | ppm | Outlet Flow Rate | 112 | m3/min | |
| 6 | Element Design Temp. | 54 | °C | Outlet Pressure | 6.8 | barg | |
| 7 | Flow Direction | Outside to Inside | | Outlet Temp. | 38 | °C | |
| 8 | Design Code | KS B 6750-3 | | Pressure Drop | 0.2 | bar | |
| 9 | Auto Drain | HAD-30 | | Design Pressure | 9.7 | barg | |
| 10 | | | | Design Temperature | 100 | °C | |
| CONSTRUCTION | | | | | | | |
| 12 | Inlet Connection | 150A | KS 10K SO.FF. | Dimension (W x L) | 700 X 1251 | mm | |
| 13 | Outlet Connection | 150A | KS 10K SO.FF. | Weight | 180 | kg | |
| 14 | Drain Connection | 15A | PT Female Screw | Color (Munsell) | 5.7PB 4.1/9.9 | | |
| MATERIALS | | | | | | | |
| 16 | Head | SS275 | | | | | |
| 17 | Bowl | SPP | | | | | |
| 18 | Flange | SS275 | | | | | |
| 19 | Gasket | Non-Asbestos | | | | | |
| 20 | Element | Glass Fiber | | | | | |
| 21 | Bolt / Nut | SS400 | | | | | |
| STANDRAD FEATURES AND CONTROL | | | | | | | |
| 23 | Pressure Gauge | YES | | | | | |
| 24 | Differential Indicator | NO | | | | | |
| 25 | Differential Transmitter | NO | | | | | |
| 26 | Auto Drain | YES | | | | | |
| NOTES | | | | | | | |
| 28 | | | | | | | |
| 29 | | | | | | | |
| 30 | | | | | | | |
| 31 | | | | | | | |
| 32 | | | | | | | |
| 33 | | | | | | | |
| 34 | | | | | | | |
| 35 | | | | | | | |
| 36 | | | | | | | |
| 37 | | | | | | | |
| 38 | | | | | | | |
| 39 | | | | | | | |
| 40 | | | | | | | |
| 41 | | | | | | | |
| 42 | | | | | | | |
| 43 | | | | | | | |
| 44 | | | | | | | |
| 45 | | | | | | | |

DIMENSION



ASSEMBLY




| | | | |
|-------------------------|-----------------------|--|--|
| MODEL | HYF-0.01(PARKER)-150A | | |
| CAPACITY | 112 m³/min | | |
| INLET AIR TEMPERATURE | MAX. 54 °C | | |
| MAX. INLET AIR PRESSURE | 9.7 barg | | |
| ELEMENT TYPE | COALESCER | | |
| FILTRATION | 0.01 MICRON | | |
| IN/OUT CONNECTION | 150A FLANGE | | |
| FLOW DIRECTION | OUTSIDE TO INSIDE | | |

| NO. | PART NAME | DESCRIPTION | QTY |
|-----|-----------|--------------|-----|
| 6 | HEAD | SS275 | 2 |
| 5 | BOWL | SPP | 1 |
| 4 | ELEMENT | GLASS FIBER | 8 |
| 3 | FLANGE | SS275 | 2 |
| 2 | GASKET | NON-ASBESTOS | 1 |
| 1 | BOLT | M22 X 75L | 16 |

NOTE

1. THE LEG IS OPTIONAL.
2. THE DIFFERENTIAL PRESSURE GAUGE IS OPTIONAL.

| | | | | | | | | | |
|---|------------|---------------------|-----|-----|------|------|------|--|--------|
| △ | | | | | | | | | |
| △ | | | | | | | | | |
| △ | | | | | | | | | |
| △ | | | | | | | | | |
| △ | 2020.09.24 | ISSUED FOR PROPOSAL | | | | | | | |
| REV. NO. | DATE | DESCRIPTION | DWG | CHK | APPD | APPD | APPD | | |
| PROJECT | | | | | | | | | |
| MANUFACTURER | | | | | | | | | |
|  GSA Global Standards and Test Cells | | | | | | | | | |
| TITLE | | | | | | | | | |
| HYF-0.01(PARKER)-150A OUTLINE | | | | | | | | | |
| ITEM NO. | HYF-150A | DWG NO. | | | | | | | |
| SCALE | NONE | GSA-HYF-150A-08 | | | | | | | |
| | | | | | | | | | REV. △ |