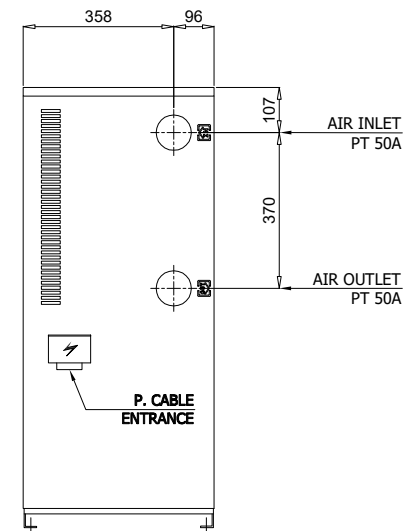
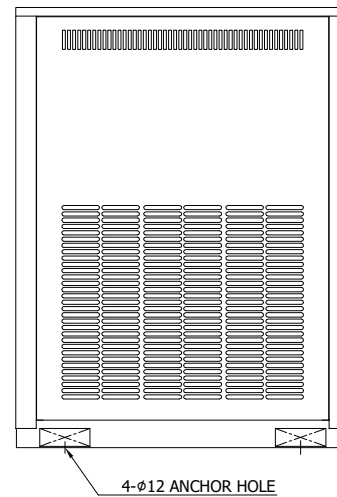
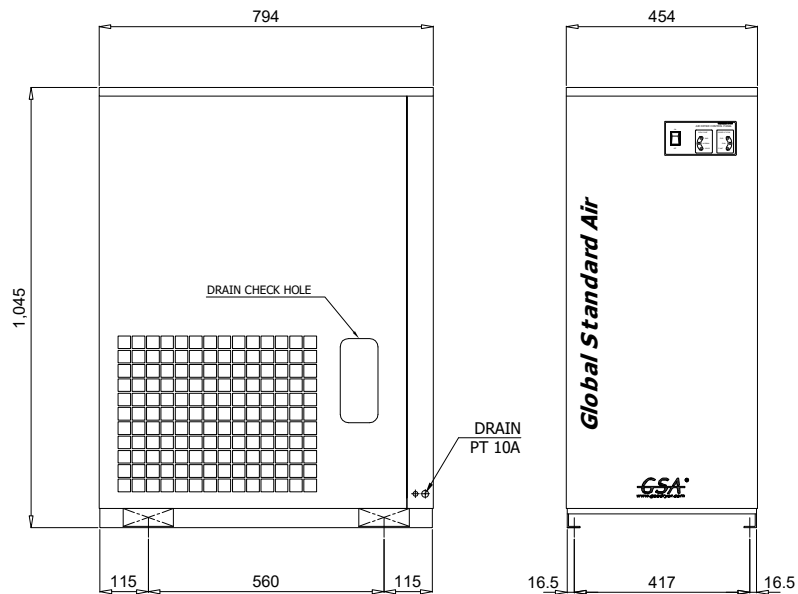
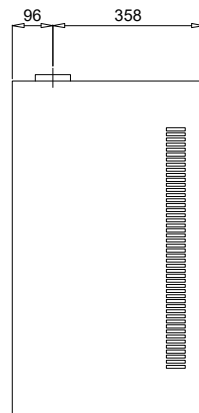
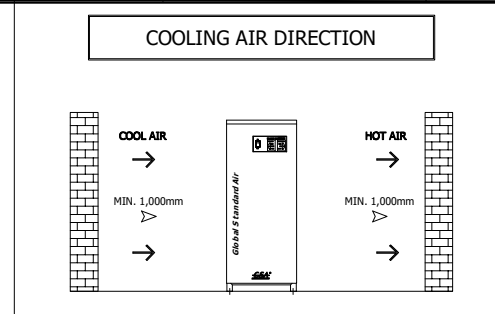
	2nd Generation Refrigerated Air Dryer		Rev.	Date	Prepared By	Checked By	Approved By
			1	2020.09.18	WOO.I.H.	JO.S.J.	KIM.H.W.
	Air Cooled Type		2				
			3				
4							
Project Name			-		Model Name		HYD-75N2
SPECIFICATION							
1							
2	Supply Voltage	220V	Inlet Flow Rate	10.5	Nm3/min		
3	Phase	1PH	Inlet Pressure	7	barg		
4	Frequency	60Hz	Inlet Temp.	38	°C		
5	Control use	220V	Outlet Flow Rate	10.5	Nm3/min		
6	Fulid	Compressed Air	Outlet Pressure	6.8	barg		
7	Location	Indoor	Outlet Temp.	28±5	°C		
8	Design Code	Maker STD.	Pressure Drop	0.2	bar		
9	Area Class	Non-Hazardous	Outlet Dew Point	2~10	°C		
10			Design Pressure	14	barg		
11			Design Temperature	70	°C		
12			Ambient Temperature	32	°C		
CONSTRUCTION							
13							
14	Refrigerant	R-22	Dimension (W x L x H)	454 X 794 X 1045	mm		
15	Ref. Compressor Type	Rotary	Weight	120	kg		
16	Ref. Compressor Capacity	1-1/2 HP	Min. Power Consumption	1.05	kW		
17	Condenser Type	Air Cooled	Inlet Connection	50A	PT Female Screw		
18	Condenser Fan Motor	100 W	Outlet Connection	50A	PT Female Screw		
19		1 EA	Drain Connection	10A	PT Female Screw		
20	Condenser Fan Size	350 mm	Color (Munsell)	5.7PB 4.1/9.9			
21	Condenser Capacity	1-1/2 HP		5.7PB 2.9/3.5			
22	Condenser Material	Aluminum & Copper					
23	Heat Exchanger Type	Block					
24	Heat Exchanger Material	Aluminum					
25	Ref. Control Device	Capillary Tube					
26	ECO Mode Control	Dew Point Temp. Control					
27	Drain Trap Type	Auto Float					
STANDRAD FEATURES AND CONTROL							
28							
29	Fan Controller	YES	Ref. Compressor	YES			
30	Ref. Liquid Filter Dryer	YES	Capillary Tube	YES			
31	Overload Relay	NO	Hot Gas Bypass Valve	NO			
32	PCB Controller	YES	Air Cooled Condenser	YES			
33	Fan Motor Test Button	NO	Accumulator	NO			
34	Air Pressure Gauge	NO	Liquid Ref. Receiver	NO			
35	Ref. Pressure Gauge	NO	Oil Separator	NO			
36	High Pressure Switch	YES	Circuit Breaker	NO			
37	Moisture Indicator	NO	Ref. Compressor Heater	NO			
38	Drain	YES					
NOTES							
39							
40							
41							
42							
43							
44							
45							
46							

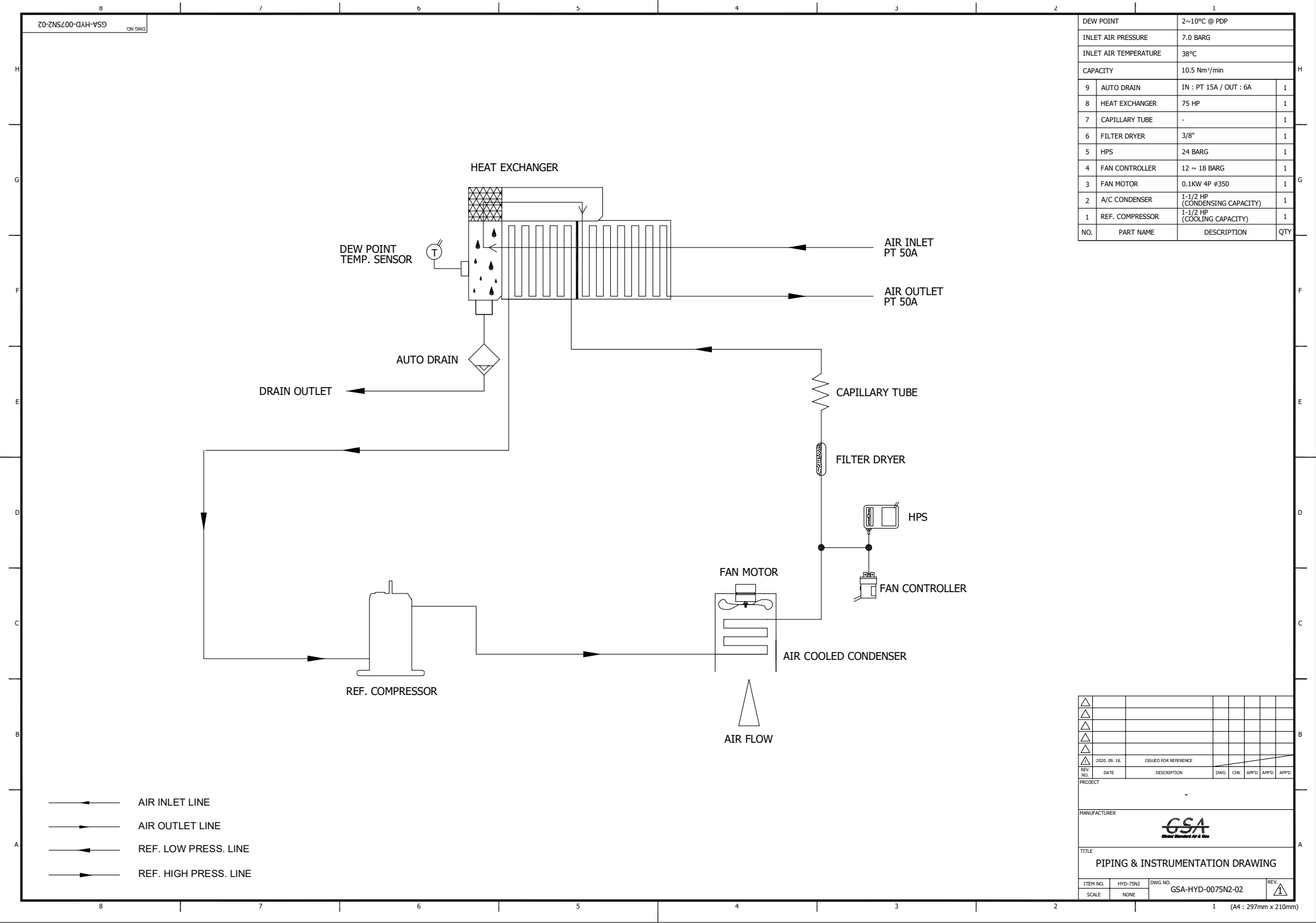
SPECIFICATION

INLET AIR TEMPERATURE	38°C
AMBIENT TEMPERATURE	32°C
INLET AIR PRESSURE	7 barg
CAPACITY	10.5 Nm ³ /min
IN/OUT CONNECTION	PT 50A
DIMENSION(WXDXH, mm)	454 X 794 X 1,045
WEIGHT	120 kg
MIN. POWER CONSUMPTION	1.05 kW
POWER SUPPLY	220V - 1PH - 50/60Hz




△										
△										
△										
△										
△										
△	2020.09.18.	ISSUED FOR REFERENCE								
REV. NO.	DATE	DESCRIPTION	DWG	CHK	APPD	APPD	APPD	APPD	APPD	
PROJECT										
MANUFACTURER										
TITLE										
OUTLINE DRAWING										
ITEM NO.	HYD-75N2	DWG NO.	GSA-HYD-0075N2-01							REV.
SCALE	NONE									△

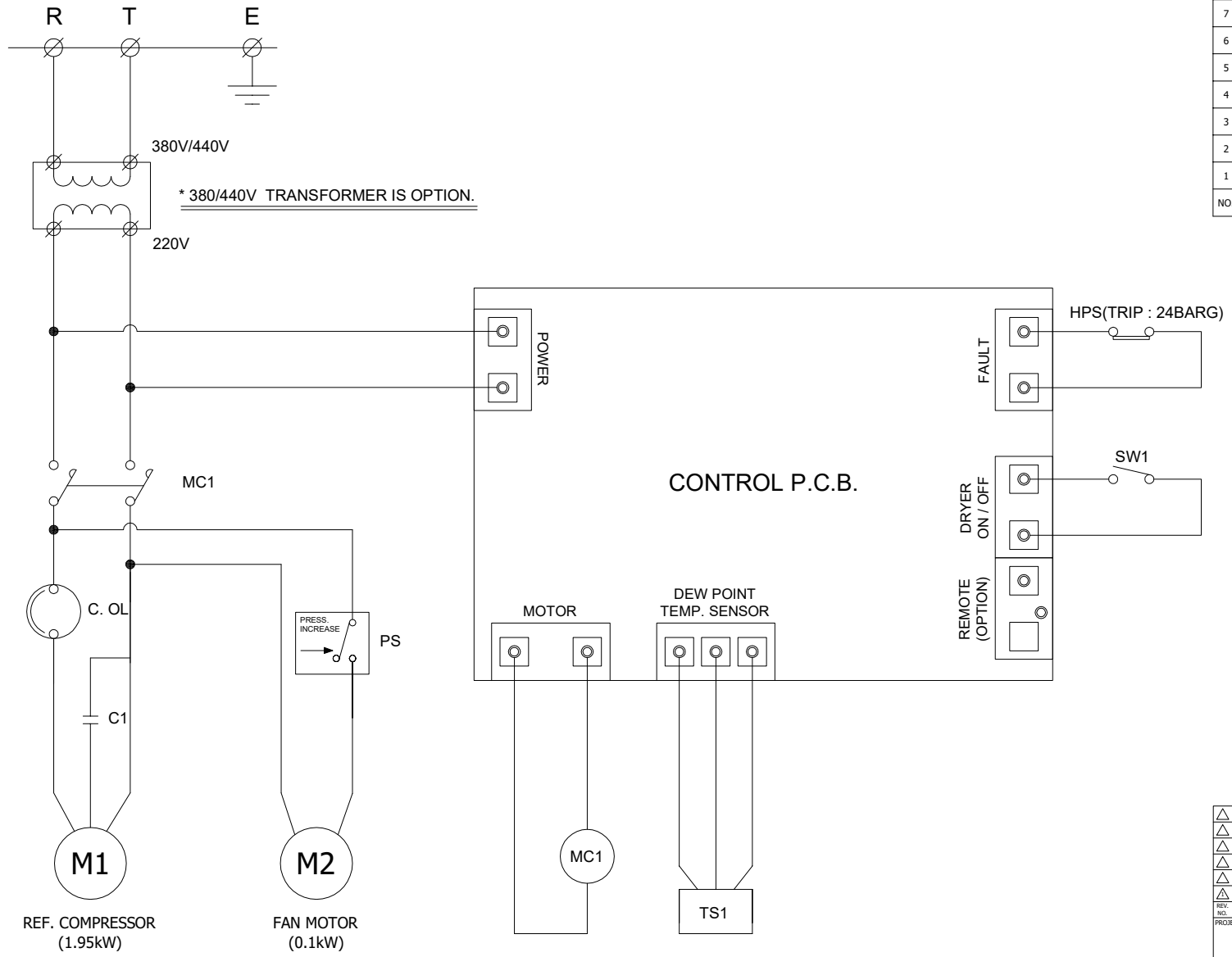
DEW POINT		2~10°C @ PDP	
INLET AIR PRESSURE		7.0 BARG	
INLET AIR TEMPERATURE		38°C	
CAPACITY		10.5 Nm ³ /min	
9	AUTO DRAIN	IN : PT 15A / OUT : 6A	1
8	HEAT EXCHANGER	75 HP	1
7	CAPILLARY TUBE	-	1
6	FILTER DRYER	3/8"	1
5	HPS	24 BARG	1
4	FAN CONTROLLER	12 ~ 18 BARG	1
3	FAN MOTOR	0.1KW 4P ø350	1
2	A/C CONDENSER	1-1/2 HP (CONDENSING CAPACITY)	1
1	REF. COMPRESSOR	1-1/2 HP (COOLING CAPACITY)	1
NO.	PART NAME	DESCRIPTION	QTY




- ← AIR INLET LINE
- AIR OUTLET LINE
- ← REF. LOW PRESS. LINE
- REF. HIGH PRESS. LINE

△										
△										
△										
△										
△										
△	2020. 09. 18.	ISSUED FOR REFERENCE								
REV. NO.	DATE	DESCRIPTION	ENGR	CHK	APPD	APPD	APPD			
PROJECT										
MANUFACTURER										
										
TITLE										
PIPING & INSTRUMENTATION DRAWING										
ITEM NO.	HYD-75N2	DWG NO.	GSA-HYD-0075N2-02				REV.	△		
SCALE	NONE								1	(A4 : 297mm x 210mm)

POWER SOURCE AC 220/380/440V, 1Ph, 50/60Hz		
10	SW1	SYSTEM ON/OFF SWITCH
9	C. OL	REF. COMPRESSOR OVERLOAD
8	HPS	HIGH PRESSURE SWITCH
7	TS1	DEW POINT TEMP. SENSOR
6	TR	TRANSFORMER(OPTION)
5	MC1	MAGNETIC CONTACTOR
4	PS	FAN CONTROLLER
3	C1	RUNNING CAPACITOR
2	M2	FAN MOTOR
1	M1	REF. COMPRESSOR
NO.	SYMBOL	DESCRIPTION



△										
△										
△										
△										
△										
△	2020. 09. 18.	ISSUED FOR REFERENCE								
REV. NO.	DATE	DESCRIPTION	DWG	CHK	APPD	APPD	APPD	APPD	APPD	
PROJECT										
MANUFACTURER										
 Global Standard Air & Gas										
TITLE										
WIRING DRAWING										
ITEM NO.	HYD-75N2	DWG NO.	GSA-HYD-0075N2-03							REV.
SCALE	NONE									△